

# MONUMENT 340

## CERTIFICATE OF LOCATION OF GOVERNMENT CORNER

East Quarter Corner of Section 5, Township 29 North, Range 22 West, County of Ramsey, State of Minnesota.

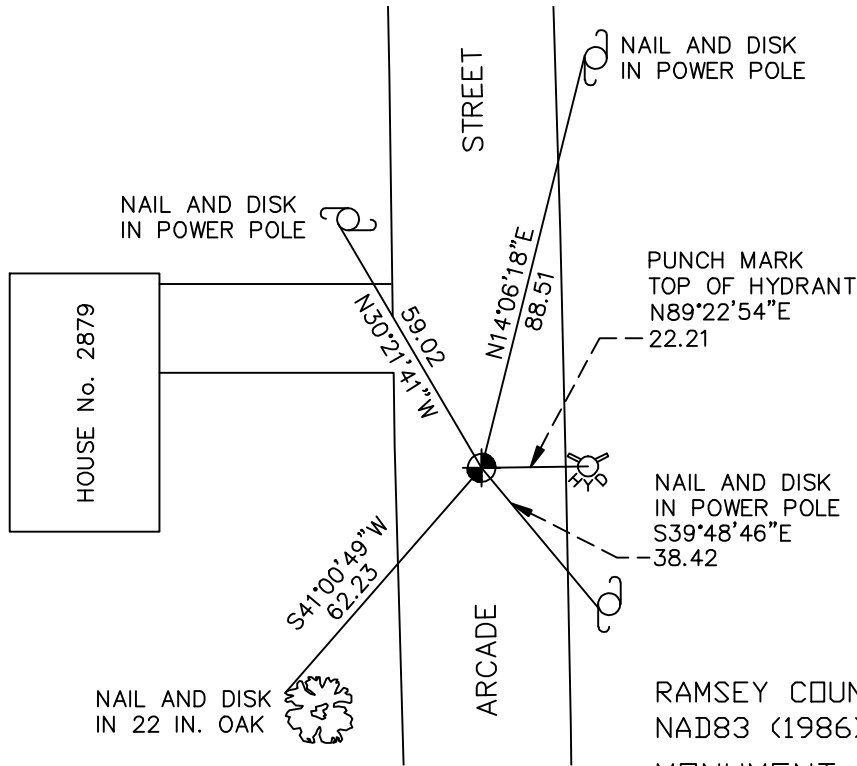
At the corner location shown on the sketch

On July 8, 2009 found a cast iron monument within a cast iron manhole assembly.

left monument as found     lowered monument     removed monument (explain)

On \_\_\_\_\_ placed a \_\_\_\_\_

## SKETCH OF REFERENCE TIES



RAMSEY COUNTY  
NAD83 (1986)  
MONUMENT 340

ALL DISTANCES ARE SHOWN IN U.S. SURVEY FEET.  
BEARINGS ARE FOR TIE REFERENCE PURPOSES ONLY.

X= 581962.970 (Easting)  
Y= 186566.785 (Northing)

Statements of evidence relative to this corner are on the following page(s).

I hereby certify that this document and the data contained herein was prepared by me or under my direct supervision this \_\_\_\_\_ day of \_\_\_\_\_, 20\_\_\_\_.

SIGNATURE

Minnesota License No. \_\_\_\_\_

- County Surveyor  
 Deputy County Surveyor     Land Surveyor

OFFICE OF COUNTY SURVEYOR  
County of Ramsey

I hereby certify that this document was filed in the County Surveyor's office on the \_\_\_\_\_ day of \_\_\_\_\_, 20\_\_\_\_.

SIGNATURE

Michael D. Fiebiger, P.L.S.  
Ramsey County Surveyor

## MONUMENT 340

Found an iron; dug down +/- 4 feet and found nothing; placed a cast iron monument, August 31, 1976.

Monument checked, September 12, 1977.

Tied monument, March, 1984.

Checked and retied, August 8, 1990.

Tied monument out for reconstruction and removed, March 31, 1997.

Relocated position and set a 20 inch cast iron monument within a cast iron manhole assembly, August, 1998.

Tied monument, January 7, 2003.

Retied monument, July 8, 2009.