

MONUMENT 331N

CERTIFICATE OF LOCATION OF GOVERNMENT CORNER

Monument on the North-South Quarter Line, South of the North Quarter Corner of Section 3, Township 29 North, Range 23 West, County of Ramsey, State of Minnesota.

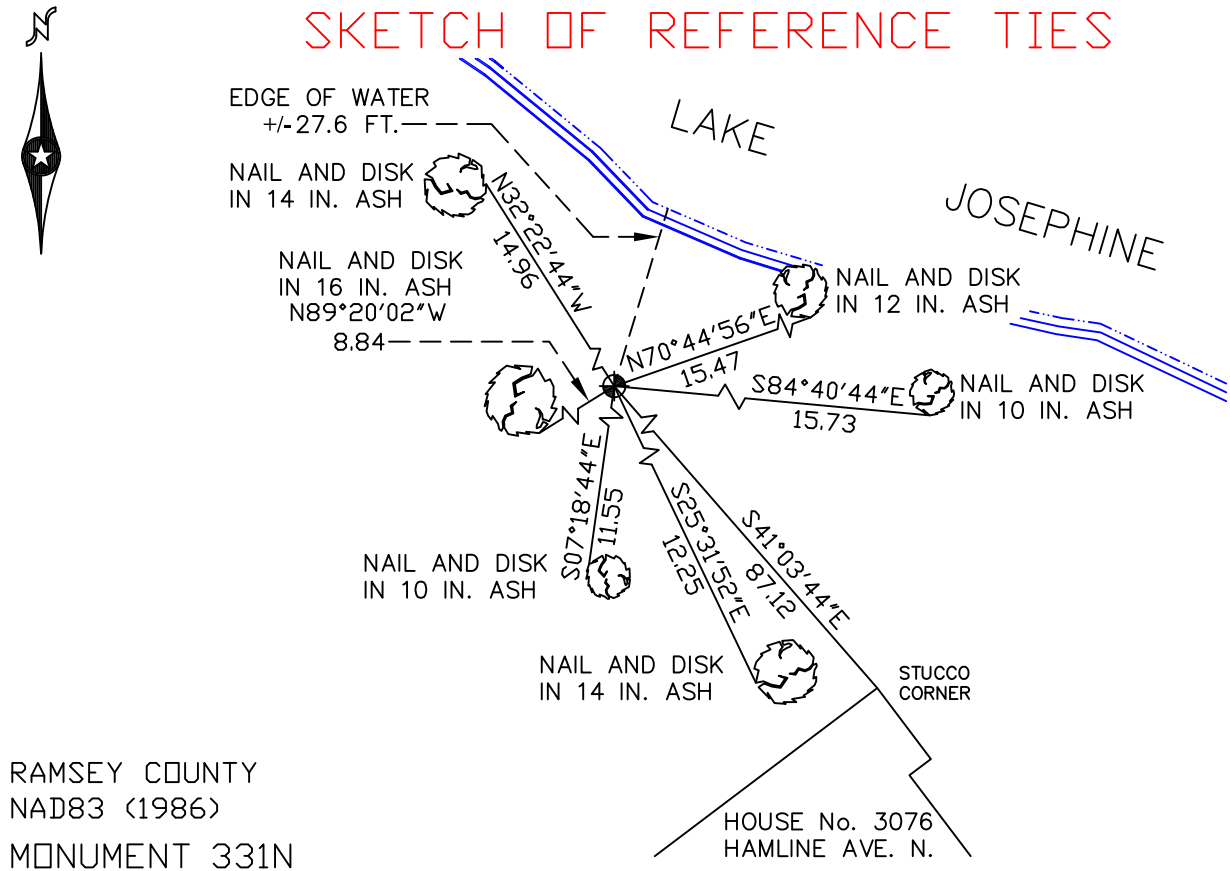
At the corner location shown on the sketch

On July 23, 2009 found a cast iron monument, flush.

left monument as found lowered monument removed monument (explain)

On _____ placed a _____

SKETCH OF REFERENCE TIES



RAMSEY COUNTY
NAD83 (1986)
MONUMENT 331N

X = 558501.189 (Easting)
Y = 188978.386 (Northing)

ALL DISTANCES ARE SHOWN IN U.S. SURVEY FEET.
BEARINGS ARE FOR TIE REFERENCE PURPOSES ONLY.

Statements of evidence relative to this corner are on the following page(s).

I hereby certify that this document and the data contained herein was prepared by me or under my direct supervision this _____ day of _____, 20____.

SIGNATURE

Minnesota License No. _____

- County Surveyor
 Deputy County Surveyor Land Surveyor

OFFICE OF COUNTY SURVEYOR
County of Ramsey

I hereby certify that this document was filed in the County Surveyor's office on the _____ day of _____, 20____.

SIGNATURE

Michael D. Fiebiger, P.L.S.
Ramsey County Surveyor

MONUMENT 331N

Found a granite monument flush on slope and tied, August 1, 1974.

Monument checked, May 9, 1977.

Placed a cast iron monument, October 17, 1984.

Checked ties, November 27, 1990.

Tied monument, July 23, 2009.