

# MONUMENT 310

## CERTIFICATE OF LOCATION OF GOVERNMENT CORNER

North Quarter Corner of Section 2, Township 29 North, Range 23 West, County of Ramsey, State of Minnesota.

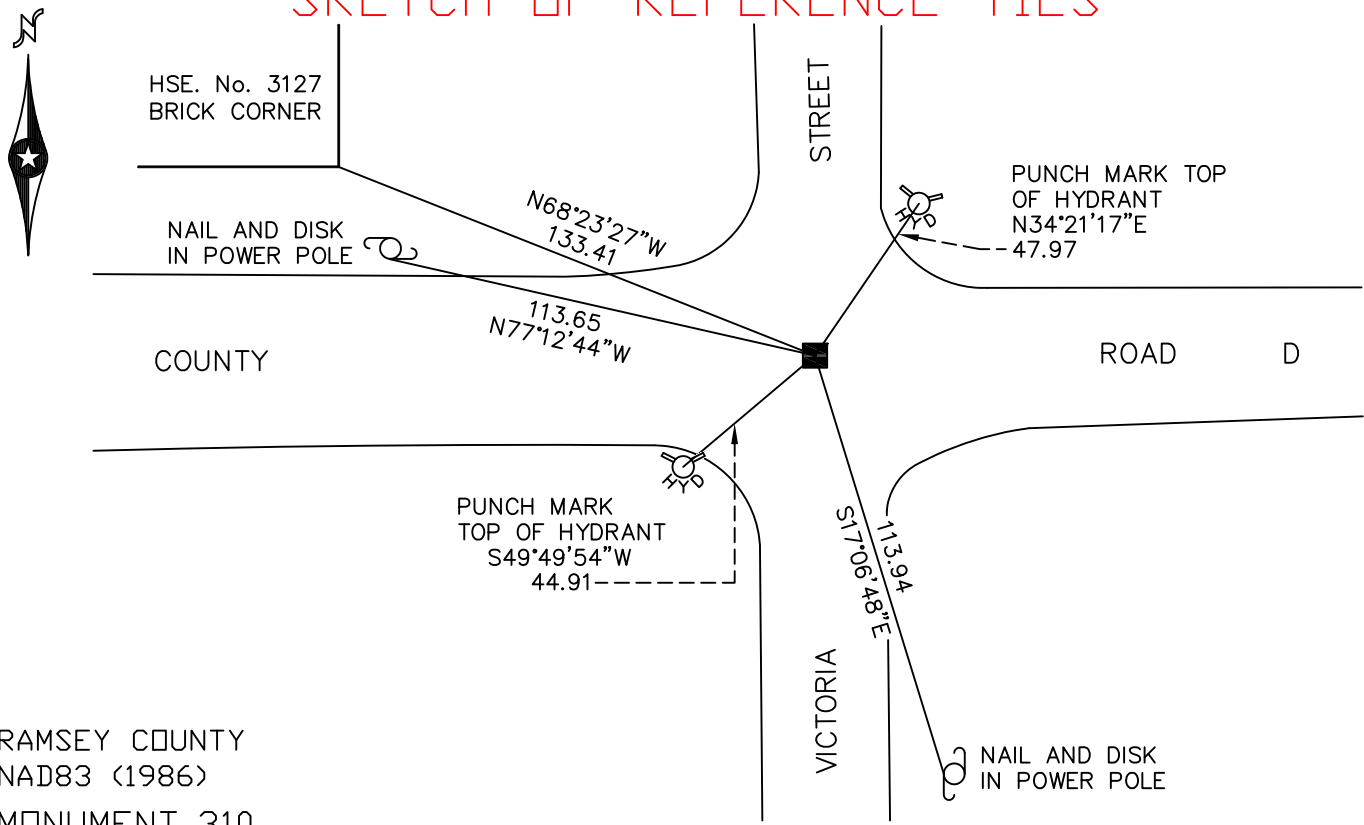
At the corner location shown on the sketch

On July 16, 2009 found a granite monument within a cast iron manhole assembly.

left monument as found     lowered monument     removed monument (explain)

On \_\_\_\_\_ placed a \_\_\_\_\_

### SKETCH OF REFERENCE TIES



RAMSEY COUNTY  
NAD83 (1986)  
MONUMENT 310

X = 563743.790 (Easting)  
Y = 189328.102 (Northing)

ALL DISTANCES ARE SHOWN IN U.S. SURVEY FEET.  
BEARINGS ARE FOR TIE REFERENCE PURPOSES ONLY.

Statements of evidence relative to this corner are on the following page(s).

I hereby certify that this document and the data contained herein was prepared by me or under my direct supervision this \_\_\_\_\_ day of \_\_\_\_\_, 20\_\_\_\_.

SIGNATURE

Minnesota License No. \_\_\_\_\_

- County Surveyor  
 Deputy County Surveyor     Land Surveyor

OFFICE OF COUNTY SURVEYOR  
County of Ramsey

I hereby certify that this document was filed in the County Surveyor's office on the \_\_\_\_\_ day of \_\_\_\_\_, 20\_\_\_\_.

SIGNATURE

Michael D. Fiebiger, P.L.S.  
Ramsey County Surveyor

## MONUMENT 310

Found a P.K. nail on surface; found a 1/4 in. rod in concrete down 5 in.; removed concrete and found a granite monument down 0.85 ft., April 15, 1975.

Placed a cast iron monument and cemented it in, April 17, 1975.

Tied monument, June 5, 1981.

Retied monument, January 18, 1991.

Retied monument, May 21, 2003.

Removed short cast iron from above granite and placed P.V.C. pipe and manhole above granite monument, May 11, 2004.

Retied monument, July 16, 2009.