

MONUMENT 307N

CERTIFICATE OF LOCATION OF GOVERNMENT CORNER

Meander Corner No. 15, Section 34, Township 30 North, Range 23 West, County of Ramsey, State of Minnesota.

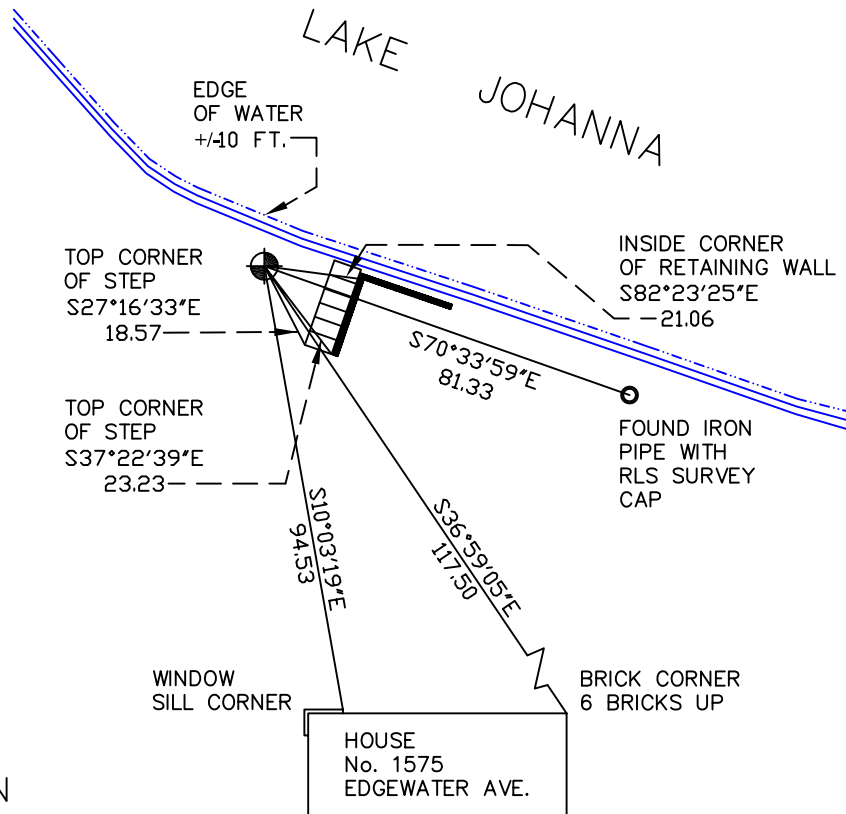
At the corner location shown on the sketch

On July 22, 2009 found a cast iron monument in rock landscaping, flush.

left monument as found lowered monument removed monument (explain)

On _____ placed a _____

SKETCH OF REFERENCE TIES



RAMSEY COUNTY
NAD83 (1986)
MONUMENT 307N

X= 555863.396 (Easting)
Y= 190373.292 (Northing)

ALL DISTANCES ARE SHOWN IN U.S. SURVEY FEET.
BEARINGS ARE FOR TIE REFERENCE PURPOSES ONLY.

Statements of evidence relative to this corner are on the following page(s).

I hereby certify that this document and the data contained herein was prepared by me or under my direct supervision this _____ day of _____, 20____.

SIGNATURE

Minnesota License No. _____

- County Surveyor
 Deputy County Surveyor Land Surveyor

OFFICE OF COUNTY SURVEYOR
County of Ramsey

I hereby certify that this document was filed in the County Surveyor's office on the _____ day of _____, 20____.

SIGNATURE

Michael D. Fiebiger, P.L.S.
Ramsey County Surveyor

MONUMENT 307N

Found a 16 in. long, 1/2 in. inside diameter iron, down 0.2 ft.; continued digging; found granite monument down 3 ft.; placed a 20 in. cast iron monument over granite monument; tied monument, April 29, 1987.

Retied monument and removed. Monument could be leaning north, May 14, 2003.

Placed a 20 in. cast iron monument flush with ground, August 29, 2003.

Tied monument, July 22, 2009.