

MONUMENT 2SC

CERTIFICATE OF LOCATION OF GOVERNMENT CORNER

North Quarter Corner of Section 6, Township 30 North, Range 23 West, County of Ramsey, State of Minnesota.

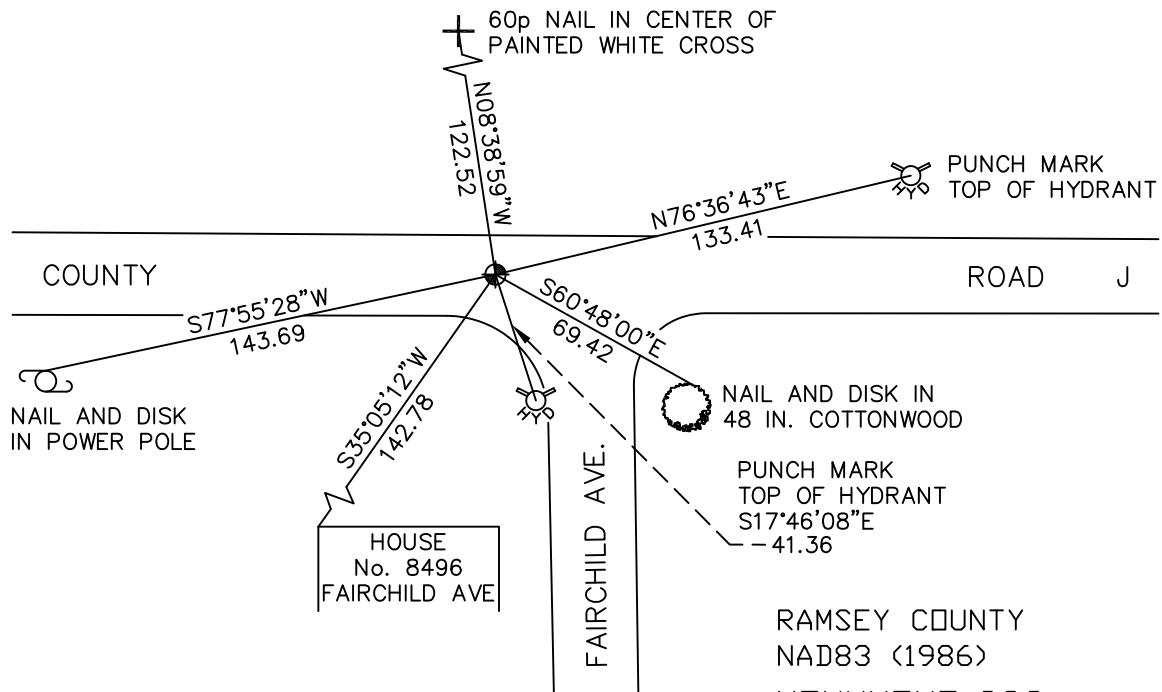
At the corner location shown on the sketch

On September 2, 2009 found a cast iron monument, marked "3RD CORRECTION LINE",
(2122.19 feet east of monument 1SC), flush.

left monument as found lowered monument removed monument (explain)

On _____ placed a _____

SKETCH OF REFERENCE TIES



RAMSEY COUNTY
 NAD83 (1986)
 MONUMENT 2SC
 X= 542300.065 (Easting)
 Y= 221596.890 (Northing)
 "CLOSING CORNER" IS 0.03 FT. NORTH.

ALL DISTANCES ARE SHOWN IN U.S. SURVEY FEET.
 BEARINGS ARE FOR TIE REFERENCE PURPOSES ONLY.

Statements of evidence relative to this corner are on the following page(s).

I hereby certify that this document and the data contained herein was prepared by me or under my direct supervision this _____ day of _____, 20____.

SIGNATURE

Minnesota License No. _____

- County Surveyor
 Deputy County Surveyor Land Surveyor

OFFICE OF COUNTY SURVEYOR
 County of Ramsey

I hereby certify that this document was filed in the County Surveyor's office on the _____ day of _____, 20____.

SIGNATURE

Michael D. Fiebiger, P.L.S.
 Ramsey County Surveyor

MONUMENT 2SC

Found iron in concrete; found a cast iron monument down 0.18 ft., May 3, 1975.

Tied monument, June 26, 1975.

Retied monument, May 3, 1990.

Road maintenance activity may destroy monument, 1991.

Monument located 0.2 ft. under bituminous material; short ties checked, (less than 100 ft.), October 10, 1993.

Removed cast iron monument and set a 20 in. cast iron monument marked "3RD CORRECTION LINE" in concrete, 0.03 ft. south of original cast iron monument, July 28, 1995.

Tied monument 2SC, June 20, 1996.

Retied monument, June 4, 2004.

Retied monument, September 2, 2009.