

MONUMENT 282E

CERTIFICATE OF LOCATION OF GOVERNMENT CORNER

Monument on the East and West Quarter Line West of the Center of Section 34, Township 30 North, Range 23 West, County of Ramsey, State of Minnesota.

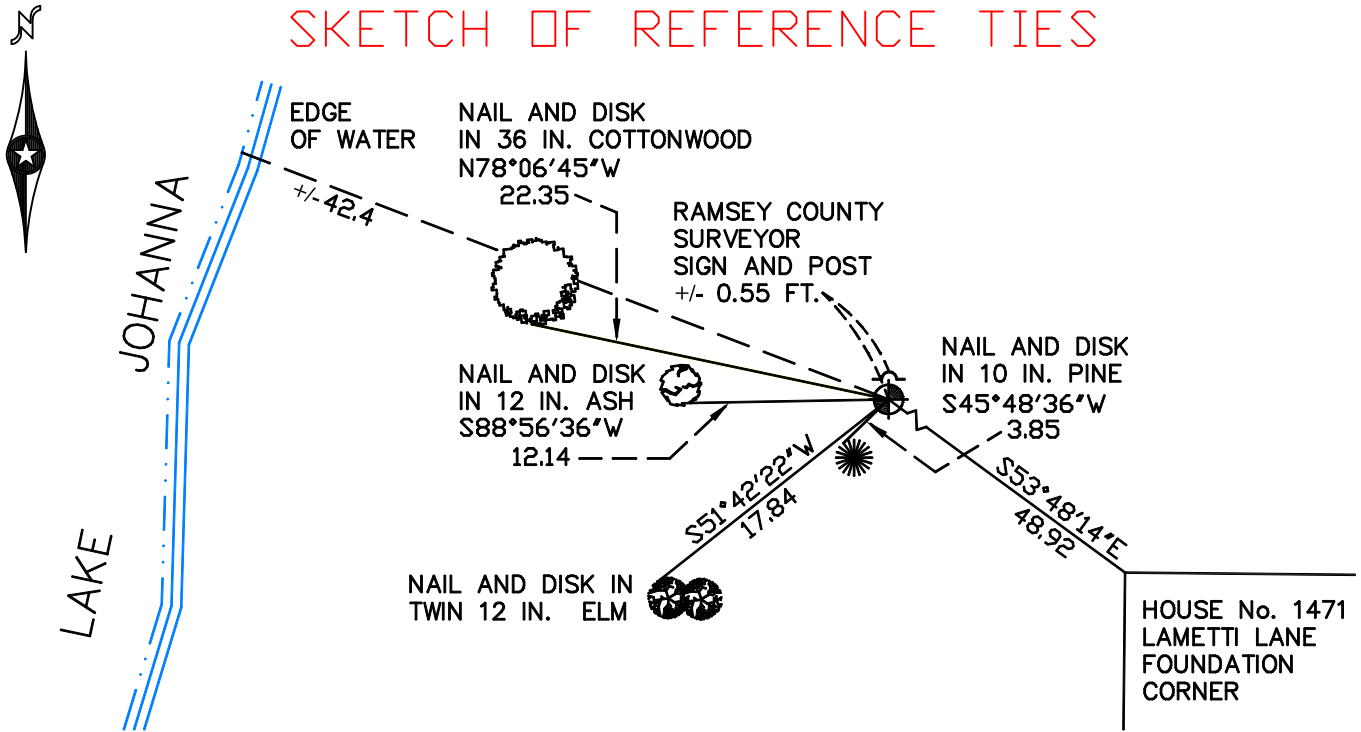
At the corner location shown on the sketch

On July 24, 2009 found a cast iron monument, down 0.65 feet.

left monument as found lowered monument removed monument (explain)

On _____ placed a _____

SKETCH OF REFERENCE TIES



RAMSEY COUNTY
NAD83 (1986)
MONUMENT 282E

X= 556988.501 (Easting)
Y= 191907.418 (Northing)

ALL DISTANCES ARE SHOWN IN U.S. SURVEY FEET.
BEARINGS ARE FOR TIE REFERENCE PURPOSES ONLY.

Statements of evidence relative to this corner are on the following page(s).

I hereby certify that this document and the data contained herein was prepared by me or under my direct supervision this _____ day of _____, 20____.

SIGNATURE

Minnesota License No. _____

- County Surveyor Deputy County Surveyor Land Surveyor

OFFICE OF COUNTY SURVEYOR
County of Ramsey

I hereby certify that this document was filed in the County Surveyor's office on the _____ day of _____, 20____.

SIGNATURE

Michael D. Fiebiger, P.L.S.
Ramsey County Surveyor

MONUMENT 282E

Found a granite monument down 2.1 ft.; set a 20 in. cast iron monument on top; retied, April 23, 1987.

Found a cast iron monument, down 10 in., retied, August 15, 1996.

Set a sign and post, September 3, 1996.

Retied monument, August 9, 2003.

Retied monument, July 24, 2009.