

MONUMENT 25SC

CERTIFICATE OF LOCATION OF GOVERNMENT CORNER

Northeast Corner of Section 1, Township 30 North, Range 22 West, County of Ramsey, State of Minnesota.

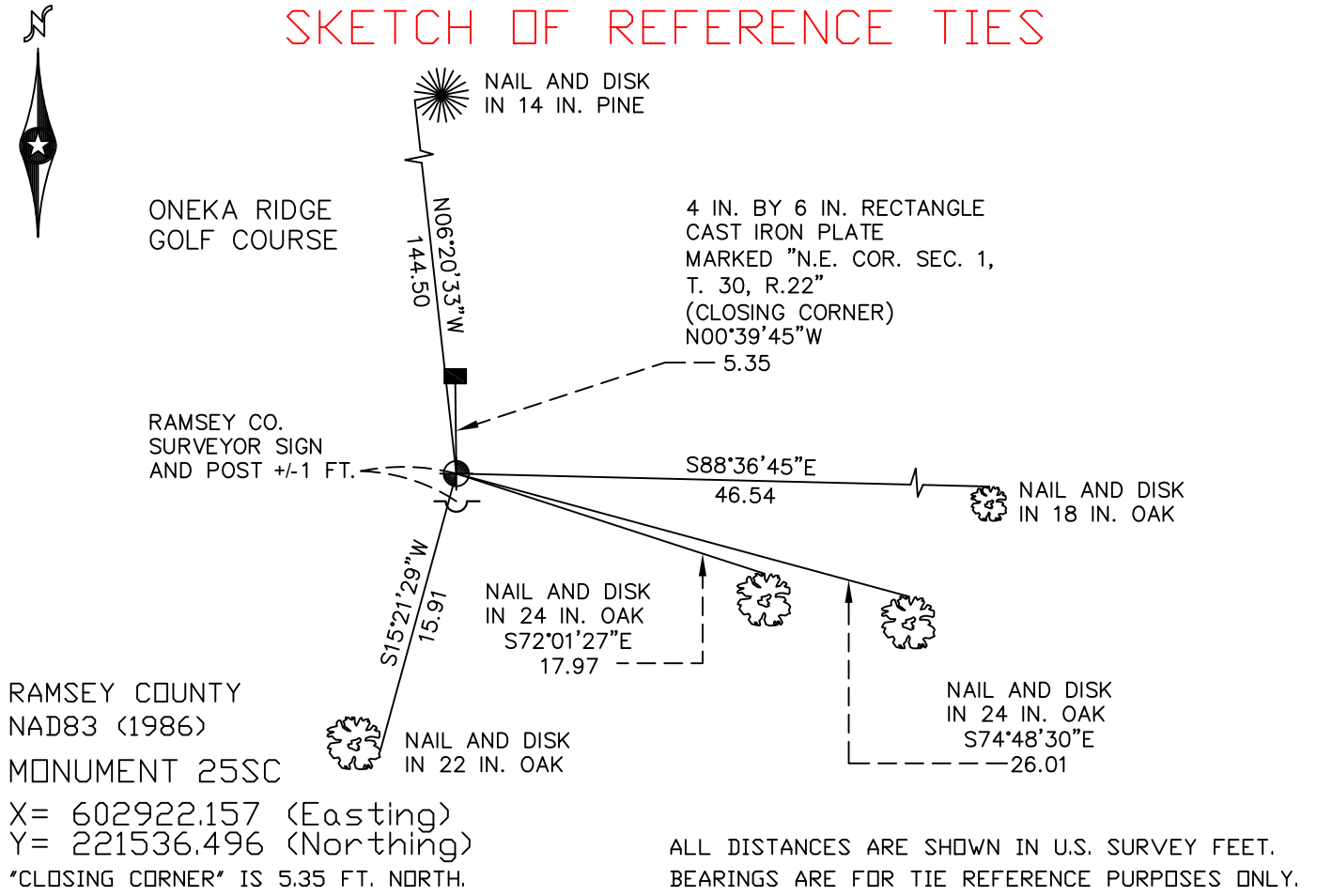
At the corner location shown on the sketch

On July 28, 2009 found a cast iron monument marked "3RD CORRECTION LINE"
(2619.41 feet east of monument 24SC), flush.

left monument as found lowered monument removed monument (explain)

On _____ placed a _____

SKETCH OF REFERENCE TIES



Statements of evidence relative to this corner are on the following page(s).

I hereby certify that this document and the data contained herein was prepared by me or under my direct supervision this _____ day of _____, 20____.

SIGNATURE

Minnesota License No. _____

- County Surveyor Deputy County Surveyor Land Surveyor

OFFICE OF COUNTY SURVEYOR
 County of Ramsey

I hereby certify that this document was filed in the County Surveyor's office on the _____ day of _____, 20____.

SIGNATURE

Michael D. Fiebiger, P.L.S.
 Ramsey County Surveyor

MONUMENT 25SC

Found rectangular iron plate, 1974.

Tied monument, July 28, 1981.

Steel fence post, 1.2 ft. north of monument; retied monument, December 28, 1992.

Washington and Ramsey County Surveyors determined that the rectangular monument is the "Closing Corner", not on standard corner (SC) location, correct location to the south. Monument to be set later, August, 1994.

Set a 20 in. cast iron monument marked "3RD CORRECTION LINE", 5.36 ft. south of "Closing Corner" (original rectangular iron monument), December 2, 1994.

Tied monument 25SC, January 23, 1998.

Retied monument, November 1, 2004.

Retied monument, set sign and post, July 28, 2009.