

MONUMENT 24SC

CERTIFICATE OF LOCATION OF GOVERNMENT CORNER

North Quarter Corner of Section 1, Township 30 North, Range 22 West, County of Ramsey, State of Minnesota.

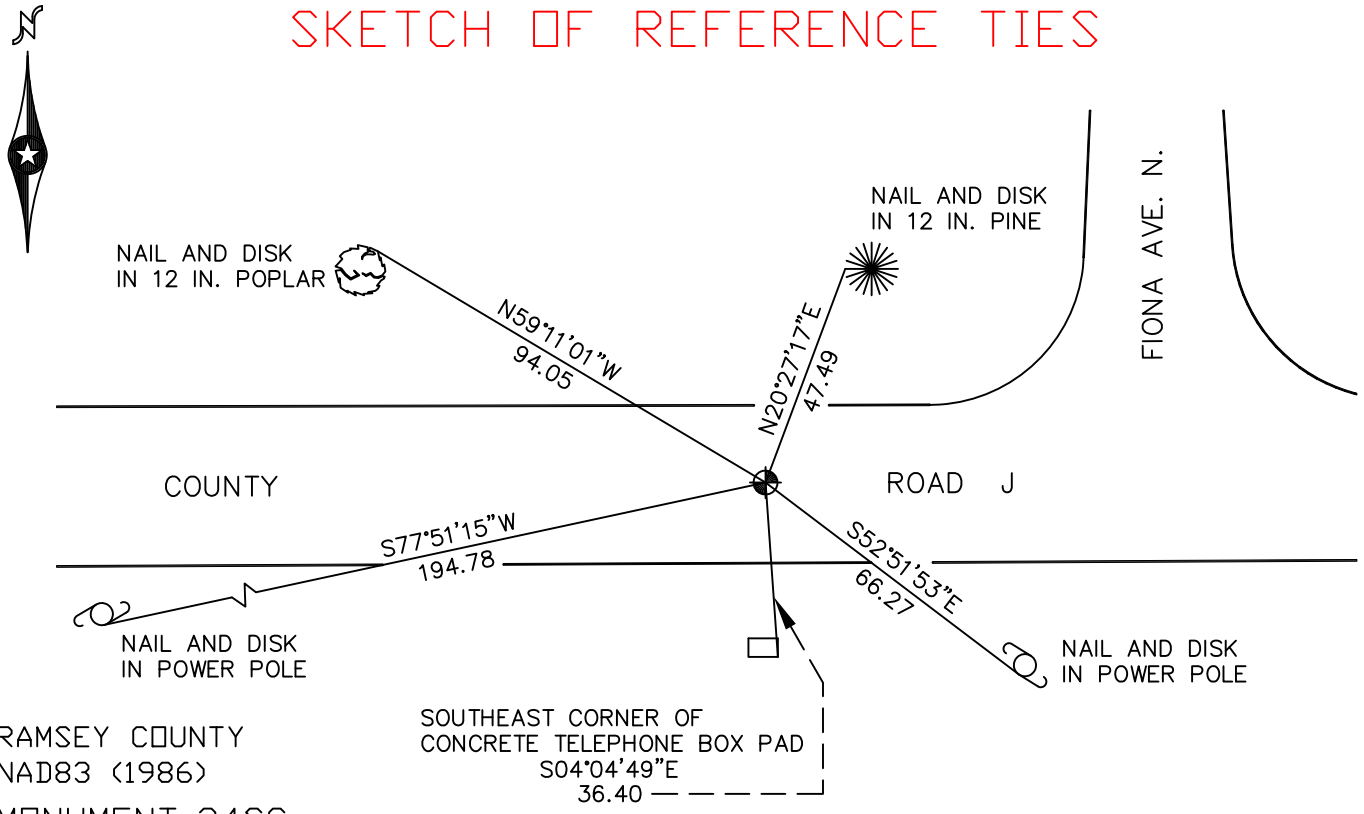
At the corner location shown on the sketch

On October 28, 2009 found a cast iron monument marked "3RD CORRECTION LINE"
(2619.65 feet east of monument 23SC), flush.

left monument as found lowered monument removed monument (explain)

On _____ placed a _____

SKETCH OF REFERENCE TIES



RAMSEY COUNTY
 NAD83 (1986)
 MONUMENT 24SC

X = 600302.759 (Easting)
 Y = 221528.837 (Northing)
 "CLOSING CORNER" IS 2.31 FT. NORTH.

ALL DISTANCES ARE SHOWN IN U.S. SURVEY FEET.
 BEARINGS ARE FOR TIE REFERENCE PURPOSES ONLY.

Statements of evidence relative to this corner are on the following page(s).

I hereby certify that this document and the data contained herein was prepared by me or under my direct supervision this _____ day of _____, 20____.

SIGNATURE

Minnesota License No. _____

County Surveyor
 Deputy County Surveyor Land Surveyor

OFFICE OF COUNTY SURVEYOR
 County of Ramsey

I hereby certify that this document was filed in the County Surveyor's office on the _____ day of _____, 20____.

SIGNATURE

Michael D. Fiebiger, P.L.S.
 Ramsey County Surveyor

MONUMENT 24SC

Found granite monument, down 0.3 ft.; placed a cast iron cap and bolt monument on top, tied out, May, 1974.

Found granite monument, flush, retied, December 28, 1992.

Granite monument removed by reconstruction of road in 1993. Granite monument determined to be closing corner not on line. Standard corner (SC) position computed and marked. Tied out standard corner monument location and set P.K. nails, July 27, 1994.

Set a 20 in. cast iron monument at corrected standard corner position. Set P.K. nails for old position and left in place, October, 1994.

Removed 20 in. cast iron monument and set a 20 in. cast iron monument marked, "3RD CORRECTION LINE", 2.31 ft. south of original granite monument location, October, 1995.

Short ties checked, June 12, 1998.

Found P.K. nail at original granite monument location and set a 1 in. iron pipe, September 22, 1998.

Retied monument 24SC, June 11, 2004.

Retied monument 24SC, October 28, 2009.