

MONUMENT 23SC

CERTIFICATE OF LOCATION OF GOVERNMENT CORNER

Northeast Corner of Section 2, Township 30 North, Range 22 West, County of Ramsey, State of Minnesota.

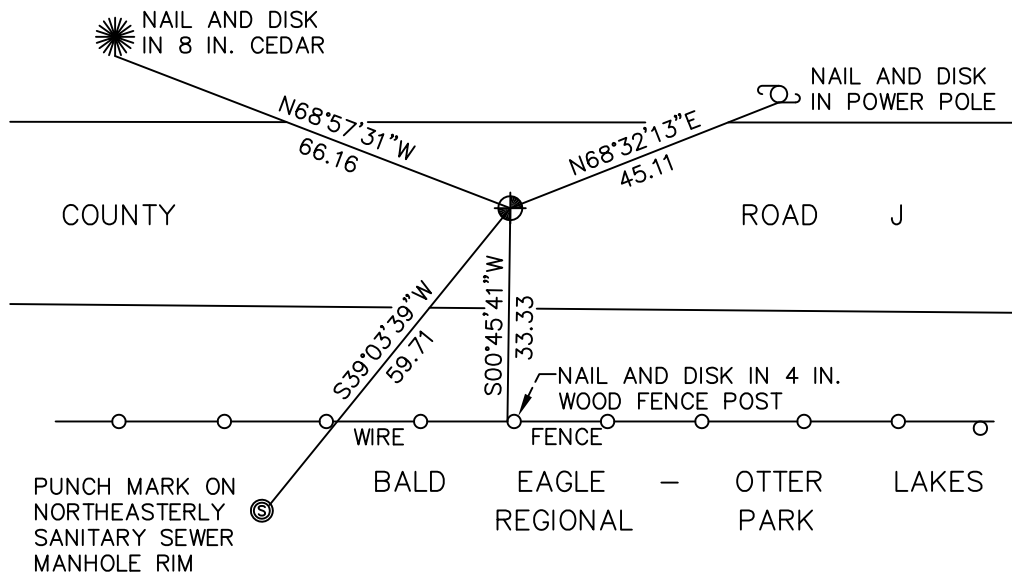
At the corner location shown on the sketch

On October 28, 2009 found a cast iron monument, within a cast iron manhole assembly, marked "3RD CORRECTION LINE 1995" (2215.32 feet east of monument 22E).

left monument as found lowered monument removed monument (explain)

On _____ placed a _____

SKETCH OF REFERENCE TIES



PUNCH MARK ON NORTHEASTERLY SANITARY SEWER MANHOLE RIM

RAMSEY COUNTY
NAD83 (1986)
MONUMENT 23SC

X= 597683.121 (Easting)
Y= 221520.441 (Northing)

ALL DISTANCES ARE SHOWN IN U.S. SURVEY FEET.
BEARINGS ARE FOR TIE REFERENCE PURPOSES ONLY.

'CLOSING CORNER' IS 0.18 FT. NORTH.

Statements of evidence relative to this corner are on the following page(s).

I hereby certify that this document and the data contained herein was prepared by me or under my direct supervision this _____ day of _____, 20____.

SIGNATURE

Minnesota License No. _____

- County Surveyor
 Deputy County Surveyor Land Surveyor

OFFICE OF COUNTY SURVEYOR
County of Ramsey

I hereby certify that this document was filed in the County Surveyor's office on the _____ day of _____, 20____.

SIGNATURE

Michael D. Fiebiger, P.L.S.
Ramsey County Surveyor

MONUMENT 23SC

Found granite monument, down 0.3 ft.; placed a cast iron cap and bolt monument on top of granite and retied, June 19, 1974.

Found cast iron cap monument flush, retied, December 28, 1992.

Removed granite and cast iron cap, October, 1995.

Set P.K. nails for "3RD CORRECTION LINE". No date given in field book.

Set a 20 in. cast iron monument marked "3RD CORRECTION LINE", 0.18 ft. south of original granite monument location, 1996.

Removed monument for Maintenance Department, June 13, 1997.

Placed a 20 in. cast iron monument, down +/-15 in. marked, "3RD CORRECTION LINE 1995", within a cast iron manhole assembly, October 27, 1997.

Tied monument, June 17, 1998.

Retied monument, June 10, 2004.

Retied monument, October 28, 2009.