

MONUMENT 230E

CERTIFICATE OF LOCATION OF GOVERNMENT CORNER

Center West One-Sixteenth Corner of Section 28, Township 30 North, Range 23 West, County of Ramsey, State of Minnesota.

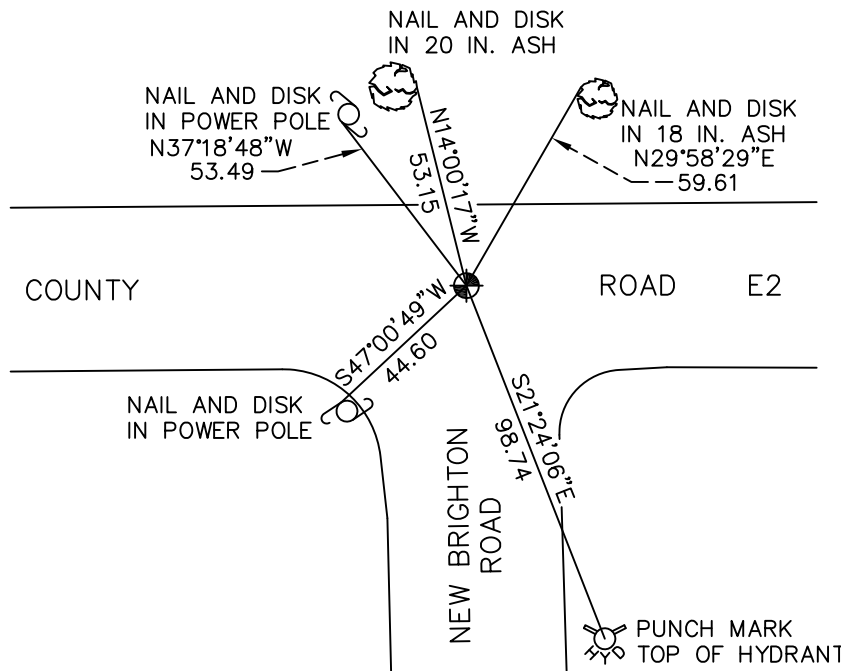
At the corner location shown on the sketch

On July 2, 2009 found a cast iron monument, within a cast iron manhole assembly.

left monument as found lowered monument removed monument (explain)

On _____ placed a _____

SKETCH OF REFERENCE TIES



RAMSEY COUNTY
NAD83 (1986)

MONUMENT 230E

X= 551810.247 (Easting)
Y= 197149.818 (Northing)

ALL DISTANCES ARE SHOWN IN U.S. SURVEY FEET.
BEARINGS ARE FOR TIE REFERENCE PURPOSES ONLY.

Statements of evidence relative to this corner are on the following page(s).

I hereby certify that this document and the data contained herein was prepared by me or under my direct supervision this _____ day of _____, 20____.

SIGNATURE

Minnesota License No. _____

- County Surveyor
 Deputy County Surveyor Land Surveyor

OFFICE OF COUNTY SURVEYOR

County of Ramsey

I hereby certify that this document was filed in the County Surveyor's office on the _____ day of _____, 20____.

SIGNATURE

Michael D. Fiebiger, P.L.S.
Ramsey County Surveyor

MONUMENT 230E

Found a granite monument, flush, May 24, 1977.

Tied monument, down +/- 0.3 ft., April 25, 1984.

Retied monument, January 9, 1992.

Retied monument, November 25, 1998.

Tied monument for road milling, May 15, 2001.

Found granite monument milled off, hole gone; relocated position and checked; set a cast iron manhole assembly around monument, June 13, 2002.

Set a short cast iron monument on top of granite monument, cemented in and tied, June 14, 2002.

Retied monument, July 2, 2009.