

MONUMENT 229

CERTIFICATE OF LOCATION OF GOVERNMENT CORNER

Center of Section 29, Township 30 North, Range 23 West, County of Ramsey,
State of Minnesota.

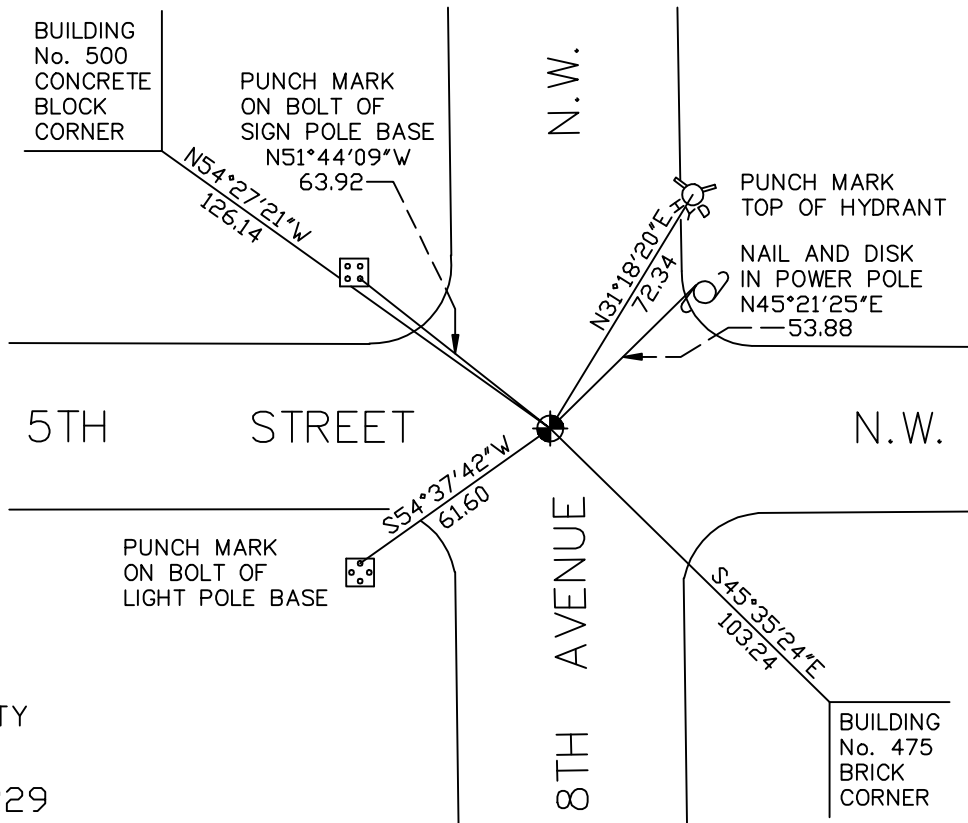
At the corner location shown on the sketch

On July 2, 2009 found a cast iron monument, down 0.1 feet.

left monument as found lowered monument removed monument (explain)

On _____ placed a _____

SKETCH OF REFERENCE TIES



RAMSEY COUNTY
NAD83 (1986)

MONUMENT 229

X= 547872.991 (Easting)
Y= 197142.532 (Northing)

ALL DISTANCES ARE SHOWN IN U.S. SURVEY FEET.
BEARINGS ARE FOR TIE REFERENCE PURPOSES ONLY.

Statements of evidence relative to this corner are on the following page(s).

I hereby certify that this document and the data contained herein was prepared by me or under my direct supervision this _____ day of _____, 20____.

SIGNATURE

Minnesota License No. _____

- County Surveyor
 Deputy County Surveyor Land Surveyor

OFFICE OF COUNTY SURVEYOR

County of Ramsey

I hereby certify that this document was filed in the County Surveyor's office on the _____ day of _____, 20____.

SIGNATURE

Michael D. Fiebiger, P.L.S.
Ramsey County Surveyor

MONUMENT 229

Found a brass plug by Frank Kvidera (County Highway Department), who dug and found a granite monument; retied granite monument, which is down 0.85 ft.; not exactly under the brass plug; street to be graded; monument will be destroyed; see Survey Book No. 2, page 10.

Resurveyed as per notes Survey Book No. 2, page 10 and placed a cast iron monument, October 10, 1975.

Tied monument, June 19, 1991.

Retied monument, November 1, 2002.

Retied monument, July 2, 2009.