

MONUMENT 206E

CERTIFICATE OF LOCATION OF GOVERNMENT CORNER

East Sixteenth Corner between Sections 21 and 28, Township 30 North, Range 23 West, County of Ramsey, State of Minnesota.

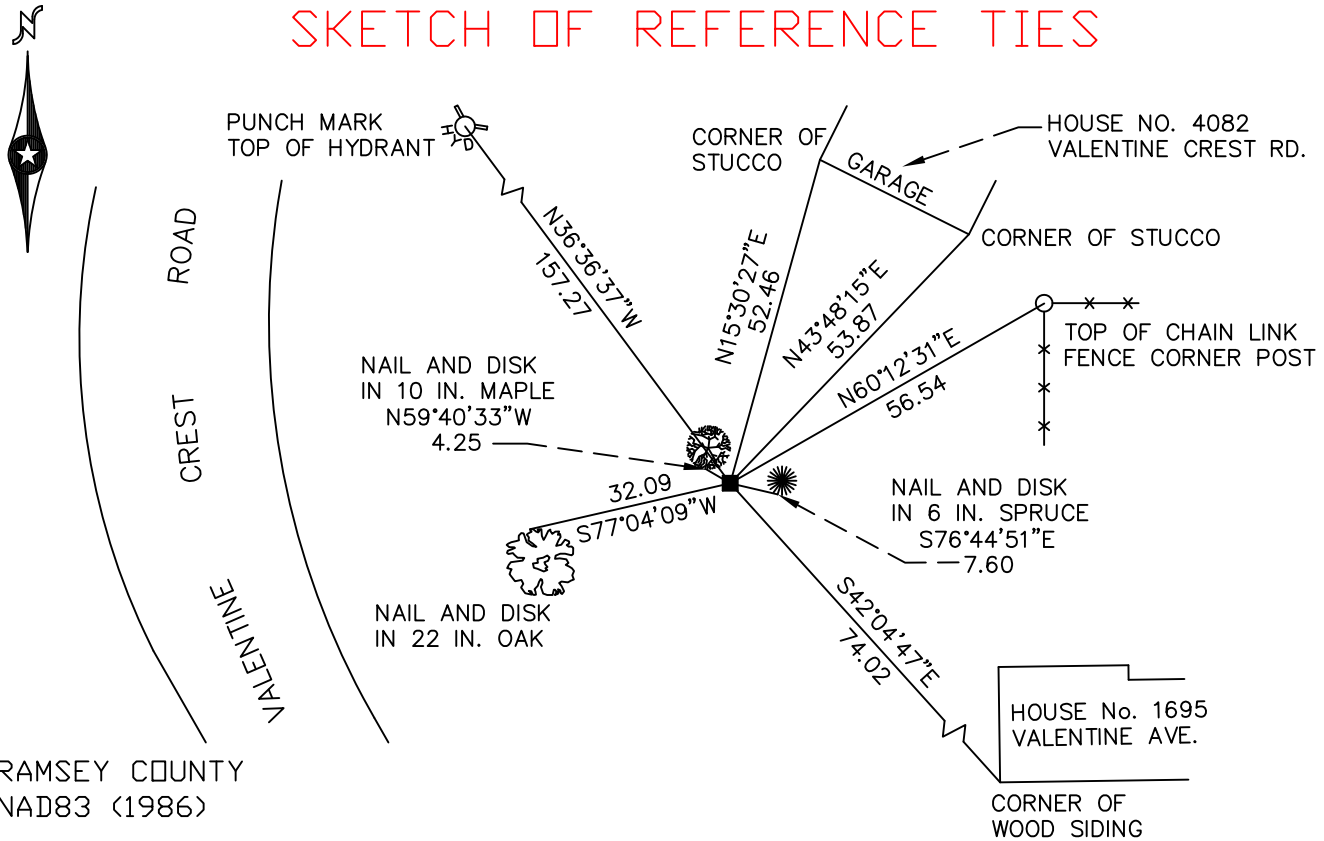
At the corner location shown on the sketch

On August 6, 2009 found a sandstone monument, down 1.25 feet.

left monument as found lowered monument removed monument (explain)

On _____ placed a _____

SKETCH OF REFERENCE TIES



RAMSEY COUNTY
NAD83 (1986)

MONUMENT 206E

X= 554410.873 (Easting)
Y= 199816.386 (Northing)

ALL DISTANCES ARE SHOWN IN U.S. SURVEY FEET.
BEARINGS ARE FOR TIE REFERENCE PURPOSES ONLY.

Statements of evidence relative to this corner are on the following page(s).

I hereby certify that this document and the data contained herein was prepared by me or under my direct supervision this _____ day of _____, 20____.

SIGNATURE

Minnesota License No. _____

- County Surveyor
 Deputy County Surveyor Land Surveyor

OFFICE OF COUNTY SURVEYOR

County of Ramsey

I hereby certify that this document was filed in the County Surveyor's office on the _____ day of _____, 20____.

SIGNATURE

Michael D. Fiebiger, P.L.S.
Ramsey County Surveyor

MONUMENT 206E

Found a sandstone monument flush and tied, July 30, 1974.

Monument found down +/-1 ft., October 31, 1986.

Retied monument, down +/-1 ft., November 18, 2002.

Retied monument, August 6, 2009.