

MONUMENT 1SC

CERTIFICATE OF LOCATION OF GOVERNMENT CORNER

Northwest Corner of Section 6, Township 30 North, Range 23 West, County of Ramsey, State of Minnesota.

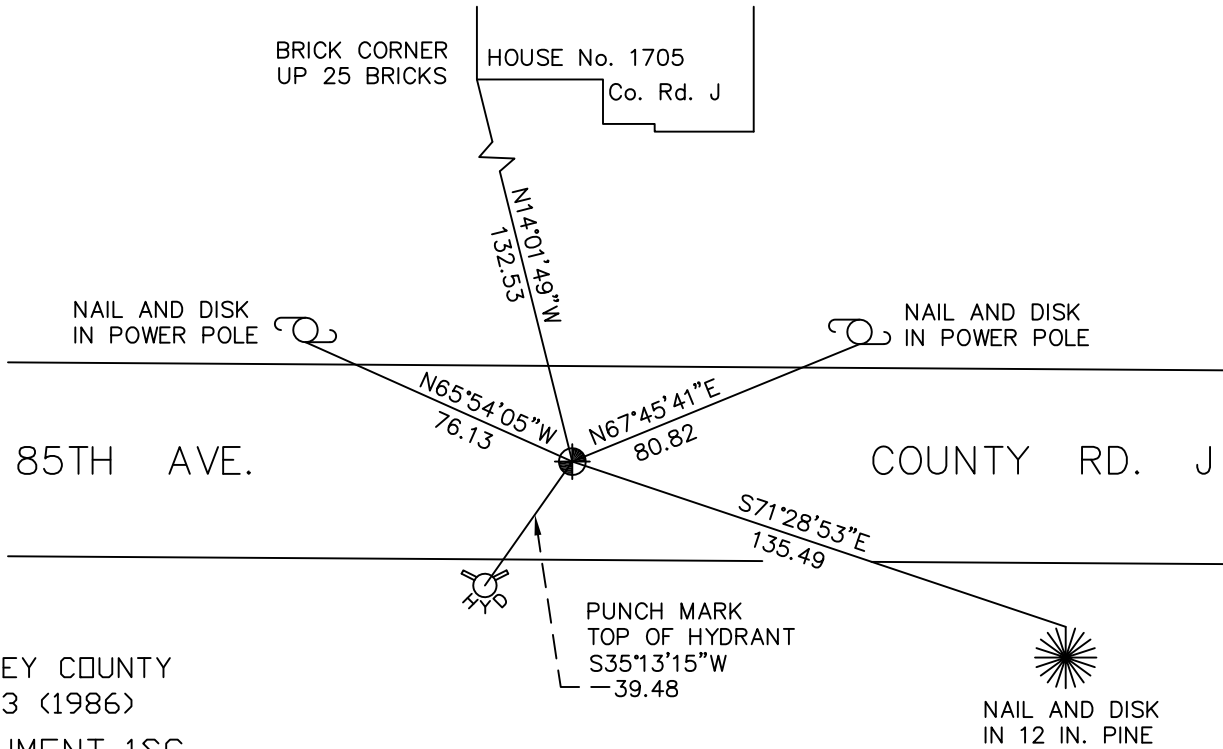
At the corner location shown on the sketch

On September 2, 2009 found a cast iron monument, marked "3RD CORRECTION LINE"
(2122.19 feet west of monument 2SC), flush.

left monument as found lowered monument removed monument (explain)

On _____ placed a _____

SKETCH OF REFERENCE TIES



RAMSEY COUNTY
NAD83 (1986)

MONUMENT 1SC

X= 540177.905 (Easting)
Y= 221607.090 (Northing)

"CLOSING CORNER" IS 0.70 FT. SOUTH.

ALL DISTANCES ARE SHOWN IN U.S. SURVEY FEET.
BEARINGS ARE FOR TIE REFERENCE PURPOSES ONLY.

Statements of evidence relative to this corner are on the following page(s).

I hereby certify that this document and the data contained herein was prepared by me or under my direct supervision this _____ day of _____, 20____.

SIGNATURE

Minnesota License No. _____

- County Surveyor Deputy County Surveyor Land Surveyor

OFFICE OF COUNTY SURVEYOR
County of Ramsey

I hereby certify that this document was filed in the County Surveyor's office on the _____ day of _____, 20____.

SIGNATURE
Michael D. Fiebiger, P.L.S.
Ramsey County Surveyor

MONUMENT 1SC

Found iron at surface; dug down and found a granite monument, down 7.5 in., May 4, 1975.

Placed a short ($4 \frac{3}{8}$ in.) cast iron monument, July 7, 1975.

Tied monument, July 29, 1975.

Short cast iron monument removed for construction, April 22, 1991.

Relocated corner position, set 4 P.K. nails, September 3, 1991.

Set 20 in. cast iron monument in concrete, November 15, 1991.

Set 20 in. cast iron monument, marked "3RD CORRECTION LINE", 0.70 ft. north of original granite monument location, July 28, 1995.

Tied monument 1SC, June 20, 1996.

Retied monument, June, 2004.

Retied monument, September 2, 2009.