

MONUMENT 179N

CERTIFICATE OF LOCATION OF GOVERNMENT CORNER

Monument on the North-South Quarter line, North of center of Section 20,
Township 30 North, Range 23 West, County of Ramsey, State of Minnesota.

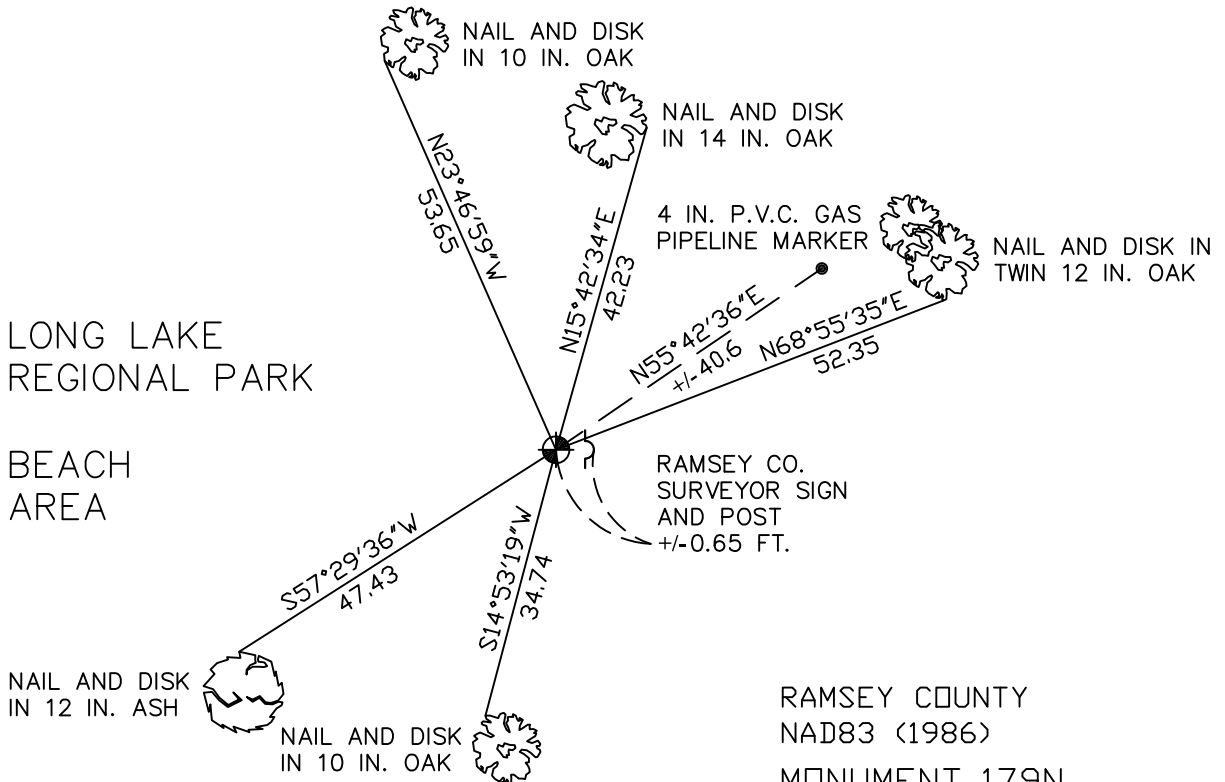
At the corner location shown on the sketch

On September 29, 2009 found a cast iron monument, down 0.20 feet.

left monument as found lowered monument removed monument (explain)

On _____ placed a _____

SKETCH OF REFERENCE TIES



LONG LAKE
REGIONAL PARK

BEACH
AREA

RAMSEY COUNTY
NAD83 (1986)
MONUMENT 179N

ALL DISTANCES ARE SHOWN IN U.S. SURVEY FEET.
BEARINGS ARE FOR TIE REFERENCE PURPOSES ONLY.

X= 547813.146 (Easting)
Y= 203368.031 (Northing)

Statements of evidence relative to this corner are on the following page(s).

I hereby certify that this document and the data contained herein was prepared by me or under my direct supervision this _____ day of _____, 20____.

SIGNATURE

Minnesota License No. _____

- County Surveyor
 Deputy County Surveyor Land Surveyor

OFFICE OF COUNTY SURVEYOR
County of Ramsey

I hereby certify that this document was filed in the County Surveyor's office on the _____ day of _____, 20____.

SIGNATURE

Michael D. Fiebiger, P.L.S.
Ramsey County Surveyor

MONUMENT 179N

Found a granite monument in open field, March 31, 1983.

Traversed through monument; Summer of 1983.

Park constructed, monument not visible. Found granite monument down +/- 22 in.; does not check with traverse. Set a 20 in. cast iron monument to grade as per traverse, retied, August 1, 1989.

Set a sign and post 4 in. south of monument and retied, October 29, 1999.

Retied monument, November 10, 2004.

Retied monument, September 29, 2009.