

MONUMENT 173N

CERTIFICATE OF LOCATION OF GOVERNMENT CORNER

Meander Corner No. 3, Section 14, Township 30 North, Range 22 West, County of Ramsey, State of Minnesota.

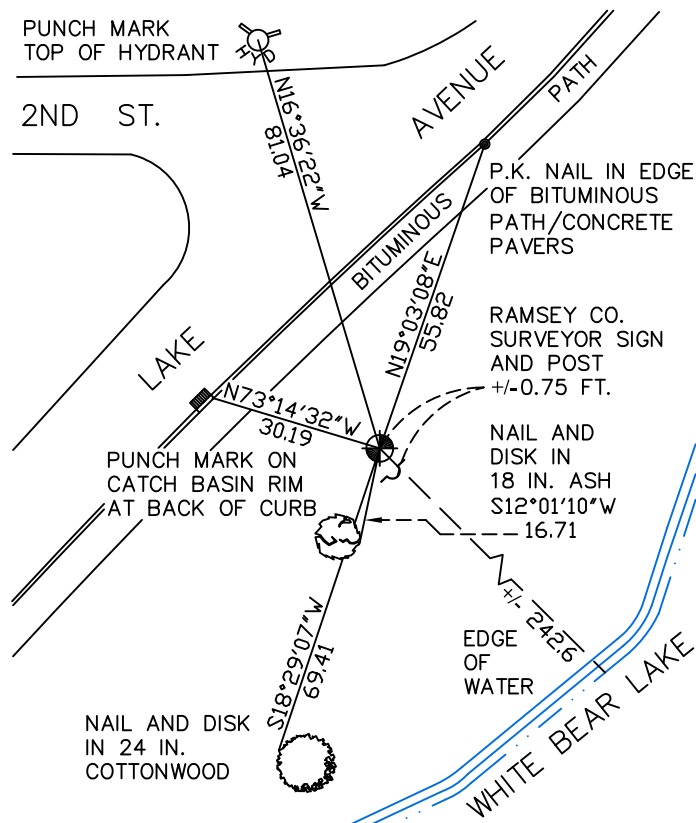
At the corner location shown on the sketch

On September 30, 2009 found a cast iron monument, flush.

left monument as found lowered monument removed monument (explain)

On _____ placed a _____

SKETCH OF REFERENCE TIES



RAMSEY COUNTY
NAD83 (1986)
MONUMENT 173N

X= 597681.882 (Easting)
Y= 206719.463 (Northing)

ALL DISTANCES ARE SHOWN IN U.S. SURVEY FEET.
BEARINGS ARE FOR TIE REFERENCE PURPOSES ONLY.

Statements of evidence relative to this corner are on the following page(s).

I hereby certify that this document and the data contained herein was prepared by me or under my direct supervision this _____ day of _____, 20____.

SIGNATURE

Minnesota License No. _____

- County Surveyor
 Deputy County Surveyor Land Surveyor

OFFICE OF COUNTY SURVEYOR
County of Ramsey

I hereby certify that this document was filed in the County Surveyor's office on the _____ day of _____, 20____.

SIGNATURE

Michael D. Fiebiger, P.L.S.
Ramsey County Surveyor

MONUMENT 173N

Re-established using angle and record distance, 1191.34 ft. from the West Quarter Corner, March 17, 1933.

Re-set using angle and stump, April 22, 1940.

Found a granite monument down 21 inches; placed a cast iron monument over and retied, April 3, 1984.

Retied, September 29, 1999.

Set a sign and post 8 inches south, October 25, 1999.

Retied monument, December 14, 2004.

Retied monument, September 30, 2009.