

# MONUMENT 16SC

## CERTIFICATE OF LOCATION OF GOVERNMENT CORNER

North Quarter Corner of Section 5, Township 30 North, Range 22 West, County of Ramsey, State of Minnesota.

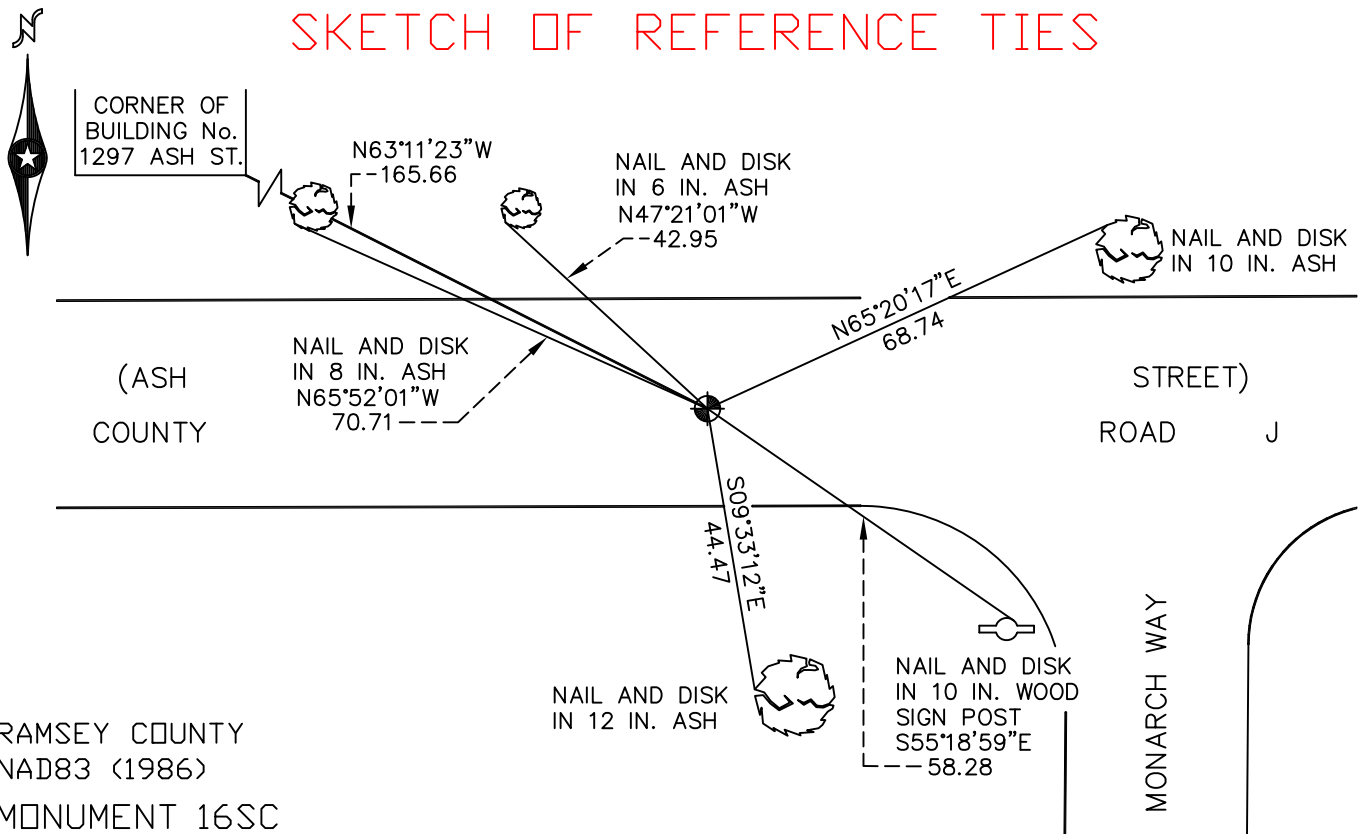
At the corner location shown on the sketch

On September 23, 2009 found a cast iron monument marked "3RD CORRECTION LINE"  
 (2641.46 feet east of monument 15SC), down 0.1 foot.

left monument as found     lowered monument     removed monument (explain)

On \_\_\_\_\_ placed a \_\_\_\_\_

### SKETCH OF REFERENCE TIES



RAMSEY COUNTY  
 NAD83 (1986)  
 MONUMENT 16SC

X = 579171.513 (Easting)  
 Y = 221547.107 (Northing)

"CLOSING CORNER" IS 0.31 FT. SOUTH.

ALL DISTANCES ARE SHOWN IN U.S. SURVEY FEET.  
 BEARINGS ARE FOR TIE REFERENCE PURPOSES ONLY.

Statements of evidence relative to this corner are on the following page(s).

I hereby certify that this document and the data contained herein was prepared by me or under my direct supervision this \_\_\_\_\_ day of \_\_\_\_\_, 20\_\_\_\_.

SIGNATURE

Minnesota License No. \_\_\_\_\_

- County Surveyor  
 Deputy County Surveyor     Land Surveyor

OFFICE OF COUNTY SURVEYOR

County of Ramsey

I hereby certify that this document was filed in the County Surveyor's office on the \_\_\_\_\_ day of \_\_\_\_\_, 20\_\_\_\_.

SIGNATURE

Michael D. Fiebiger, P.L.S.  
 Ramsey County Surveyor

## MONUMENT 16SC

Found a railroad spike over a granite monument, down 0.7 ft.; drilled a larger hole in the top of the granite monument and cemented a cast iron cap and bolt monument on top, May 16, 1974.

Retied monument, July 3, 1974.

Found cap missing, monument down 0.3 ft., July 13, 1987.

Replaced the cast iron cap, no date given in field book.

Tied out monument, for construction removal, April, 1990.

Removed cast iron cap, May 7, 1990.

Found broken granite monument, down +/-18 in., September 5, 1990.

Placed a short cast iron monument ( $4\frac{5}{8}$  in.) in "Set 45" concrete, October 30, 1990.

Placed a sign and post, +/- 26 ft. south of monument, October 16, 1991.

Retied monument, January 27, 1993.

Placed an 8 in. cast iron monument marked, "3RD CORRECTION LINE" in concrete, 0.31 ft. north of original granite monument location, July 26, 1995.

Tied monument 16SC, October 8, 1998.

Retied monument, June 25, 2004.

Retied monument, September 23, 2009.