

MONUMENT 154

CERTIFICATE OF LOCATION OF GOVERNMENT CORNER

South Quarter Corner of Section 17, Township 30 North, Range 23 West, County of Ramsey, State of Minnesota.

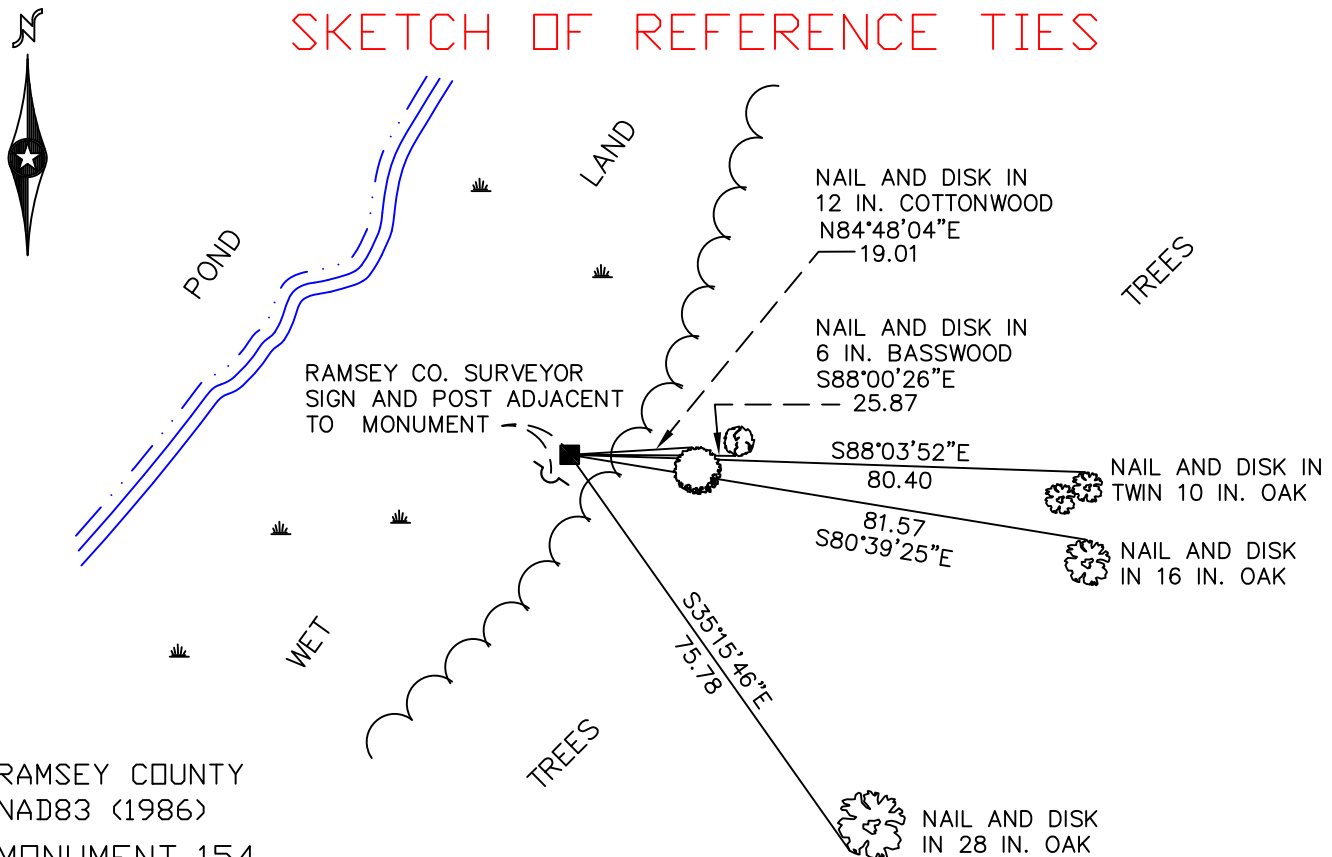
At the corner location shown on the sketch

On June 4, 2009 found a granite monument, down 1.0 foot.

left monument as found lowered monument removed monument (explain)

On _____ placed a _____

SKETCH OF REFERENCE TIES



RAMSEY COUNTY
NAD83 (1986)
MONUMENT 154

X= 547800.550 (Easting)
Y= 205052.891 (Northing)

ALL DISTANCES ARE SHOWN IN U.S. SURVEY FEET.
BEARINGS ARE FOR TIE REFERENCE PURPOSES ONLY.

Statements of evidence relative to this corner are on the following page(s).

I hereby certify that this document and the data contained herein was prepared by me or under my direct supervision this _____ day of _____, 20____.

SIGNATURE

Minnesota License No. _____

- County Surveyor
 Deputy County Surveyor Land Surveyor

OFFICE OF COUNTY SURVEYOR
County of Ramsey

I hereby certify that this document was filed in the County Surveyor's office on the _____ day of _____, 20____.

SIGNATURE

Michael D. Fiebiger, P.L.S.
Ramsey County Surveyor

MONUMENT 154

Found a granite monument, down +/-1.5 ft.; steel post placed +/-1 ft. south, November, 1981.

Checked to see if monument exists after Long Lake Park was built; found, October 10, 1988.

Found a granite monument, down +/-1.3 ft.; retied and set a sign and post 0.5 ft. south adjacent to monument, March 12, 2002.

Retied monument, down +/-1.0 ft., June 4, 2009.