

# MONUMENT 14SC

## CERTIFICATE OF LOCATION OF GOVERNMENT CORNER

North Quarter Corner of Section 6, Township 30 North, Range 22 West, County of Ramsey, State of Minnesota.

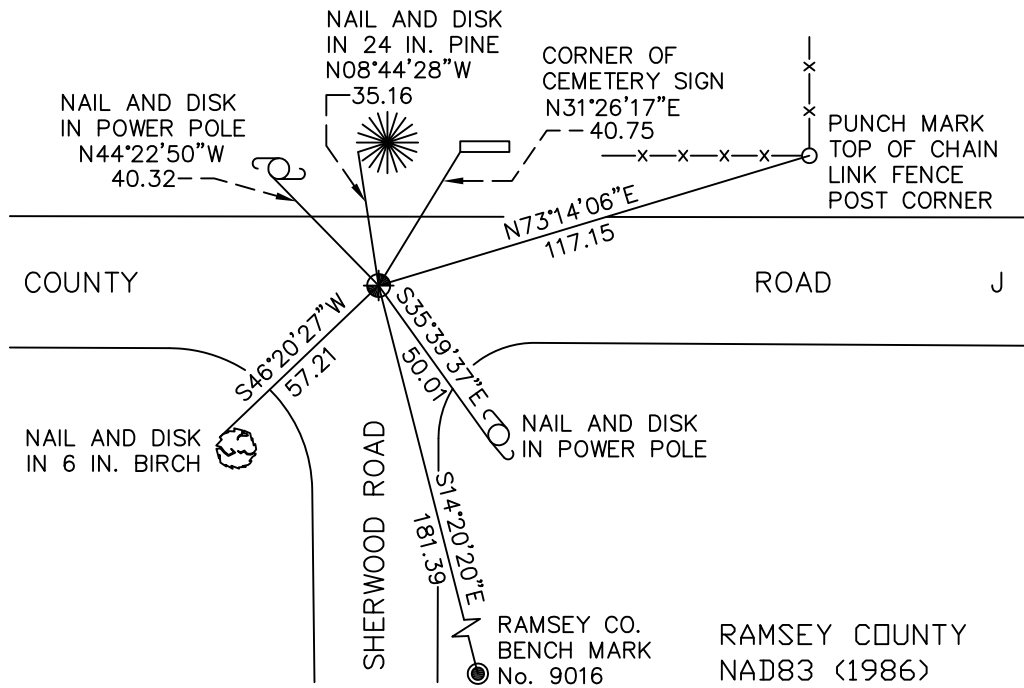
At the corner location shown on the sketch

On September 23, 2009 found a cast iron monument, marked "3RD CORRECTION LINE",  
(2564.74 feet east of monument 13SC), down 0.10 foot.

left monument as found     lowered monument     removed monument (explain)

On \_\_\_\_\_ placed a \_\_\_\_\_

## SKETCH OF REFERENCE TIES



RAMSEY COUNTY  
NAD83 (1986)

MONUMENT 14SC

X= 573892.025 (Easting)  
Y= 221538.767 (Northing)

ALL DISTANCES ARE SHOWN IN U.S. SURVEY FEET.  
BEARINGS ARE FOR TIE REFERENCE PURPOSES ONLY.

"CLOSING CORNER" IS 2.00 FT. NORTH.

Statements of evidence relative to this corner are on the following page(s).

I hereby certify that this document and the data contained herein was prepared by me or under my direct supervision this \_\_\_\_\_ day of \_\_\_\_\_, 20\_\_\_\_.

SIGNATURE

Minnesota License No. \_\_\_\_\_

- County Surveyor  
 Deputy County Surveyor     Land Surveyor

OFFICE OF COUNTY SURVEYOR

County of Ramsey

I hereby certify that this document was filed in the County Surveyor's office on the \_\_\_\_\_ day of \_\_\_\_\_, 20\_\_\_\_.

SIGNATURE

Michael D. Fiebiger, P.L.S.  
Ramsey County Surveyor

# MONUMENT 14SC

Found ½ in. iron pipe; dug down 4.0 ft., found nothing; placed cast iron monument, 1975.

Retied monument, January 23, 1976.

Tied out monument and removed cast iron for construction, April, 1990.

Placed a 20 in. cast iron monument, September 5, 1990.

Retied monument, January 27, 1993.

Placed a 20 in. cast iron monument marked "3RD CORRECTION LINE", 2.0 ft. south of original cast iron monument location, July 27, 1995.

Tied monument 14SC, September 24, 1998.

Retied monument, June, 2004.

Retied monument, September 23, 2009.