

MONUMENT 145

CERTIFICATE OF LOCATION OF GOVERNMENT CORNER

Center of Section 15, Township 30 North, Range 22 West, County of Ramsey,
State of Minnesota.

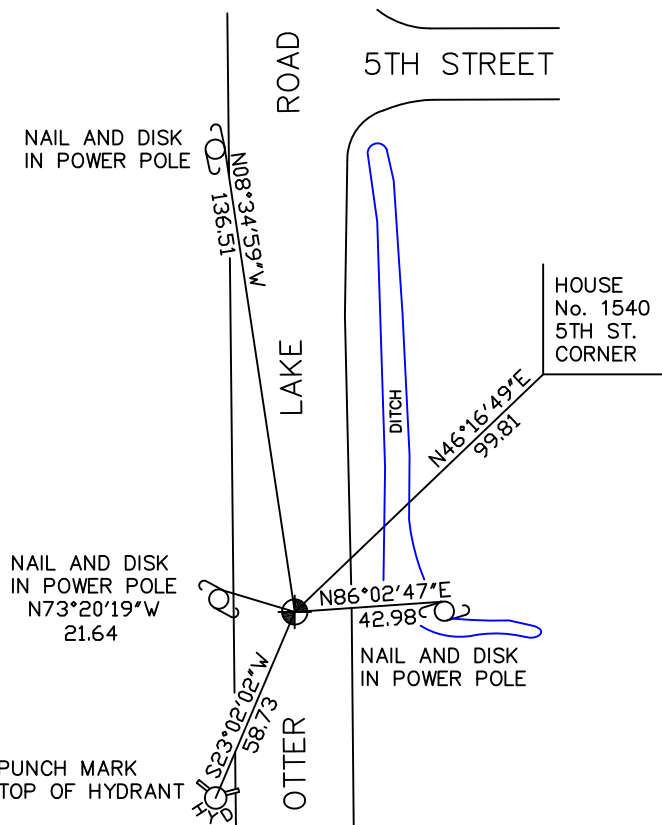
At the corner location shown on the sketch

On October 13, 2009 found a cast iron monument, down +/- 0.25 feet.

left monument as found lowered monument removed monument (explain)

On _____ placed a _____

SKETCH OF REFERENCE TIES



RAMSEY COUNTY
NAD83 (1986)
MONUMENT 145

X= 589770.440 (Easting)
Y= 207890.133 (Northing)

ALL DISTANCES ARE SHOWN IN U.S. SURVEY FEET.
BEARINGS ARE FOR TIE REFERENCE PURPOSES ONLY.

Statements of evidence relative to this corner are on the following page(s).

I hereby certify that this document and the data contained herein was prepared by me or under my direct supervision this _____ day of _____, 20____.

SIGNATURE
Minnesota License No. _____
 County Surveyor
 Deputy County Surveyor Land Surveyor

OFFICE OF COUNTY SURVEYOR
County of Ramsey

I hereby certify that this document was filed in the County Surveyor's office on the _____ day of _____, 20____.

SIGNATURE
Michael D. Fiebiger, P.L.S.
Ramsey County Surveyor

MONUMENT 145

Found a granite monument, down 0.2 ft., May 21, 1974.

Retied monument, October 10, 1974.

Set a cast iron cap and bolt monument, May 27, 1976.

Retied monument, down 0.2 ft., September 21, 1989.

Retied monument, September 30, 1999.

Retied monument, September 24, 2004.

Retied monument, October 13, 2009.