

# MONUMENT 12SC

## CERTIFICATE OF LOCATION OF GOVERNMENT CORNER

North Quarter Corner of Section 1, Township 30 North, Range 23 West, County of Ramsey, State of Minnesota.

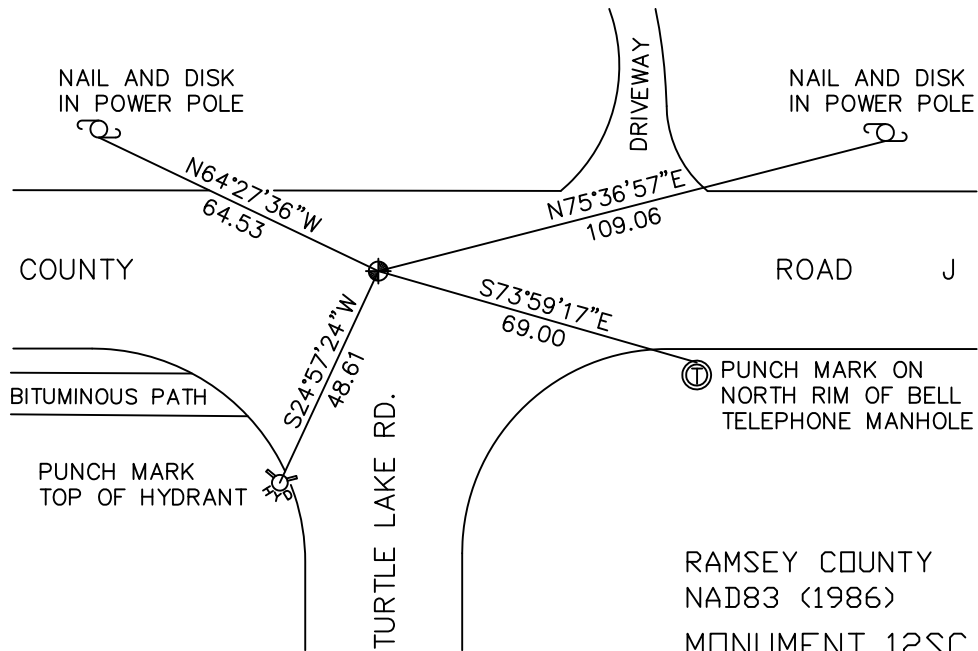
At the corner location shown on the sketch

On September 21, 2009 found a cast iron monument, marked "3RD CORRECTION LINE",  
(2639.10 feet east of monument 11SC), down 0.10 foot.

left monument as found     lowered monument     removed monument (explain)

On \_\_\_\_\_ placed a \_\_\_\_\_

## SKETCH OF REFERENCE TIES



RAMSEY COUNTY  
 NAD83 (1986)  
 MONUMENT 12SC  
 X= 568687.997 (Easting)  
 Y= 221531.757 (Northing)  
 "CLOSING CORNER" IS 0.11 FT. NORTH.

ALL DISTANCES ARE SHOWN IN U.S. SURVEY FEET.  
 BEARINGS ARE FOR TIE REFERENCE PURPOSES ONLY.

Statements of evidence relative to this corner are on the following page(s).

I hereby certify that this document and the data contained herein was prepared by me or under my direct supervision this \_\_\_\_\_ day of \_\_\_\_\_, 20\_\_\_\_.

SIGNATURE

Minnesota License No. \_\_\_\_\_

- County Surveyor  
 Deputy County Surveyor     Land Surveyor

OFFICE OF COUNTY SURVEYOR  
 County of Ramsey

I hereby certify that this document was filed in the County Surveyor's office on the \_\_\_\_\_ day of \_\_\_\_\_, 20\_\_\_\_.

SIGNATURE

Michael D. Fiebiger, P.L.S.  
 Ramsey County Surveyor

## MONUMENT 12SC

Found cast iron monument, down 0.1 ft., retied, October 25, 1974.

Tied out cast iron monument for construction removal, April, 1990.

Removed cast iron monument, May 30, 1990.

Placed 20 in. cast iron monument, September 5, 1990.

Retied monument, January 27, 1993.

Cemented monument in place, October 21, 1993.

Removed 20 in. cast iron monument; set 20 in. cast iron monument marked "3RD CORRECTION LINE" and cemented in place, 0.11 ft. south of original cast iron monument location, July 26, 1995.

Tied monument 12SC, October 8, 1998.

Retied monument, June 15, 2004.

Retied monument, September 21, 2009.