

# MONUMENT 122

## CERTIFICATE OF LOCATION OF GOVERNMENT CORNER

South Quarter Corner of Section 11, Township 30 North, Range 22 West, County of Ramsey, State of Minnesota.

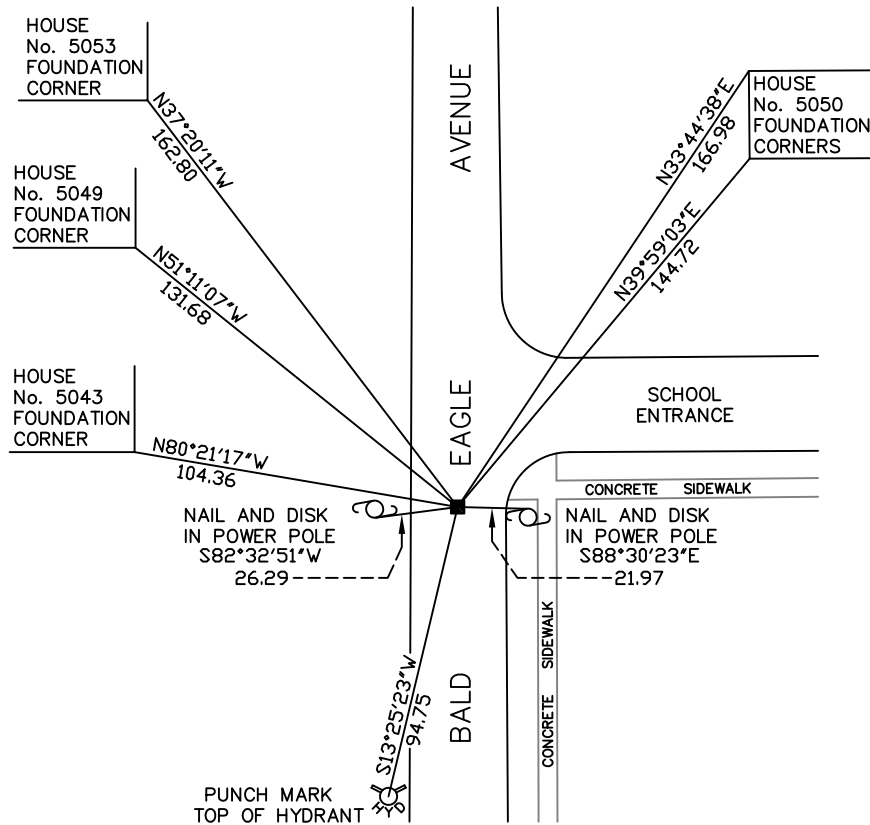
At the corner location shown on the sketch

On November 9, 2009 found a granite monument, down 0.35 feet.

left monument as found     lowered monument     removed monument (explain)

On \_\_\_\_\_ placed a \_\_\_\_\_

### SKETCH OF REFERENCE TIES



RAMSEY COUNTY  
NAD83 (1986)

MONUMENT 122

X= 595026.861 (Easting)  
Y= 210543.503 (Northing)

ALL DISTANCES ARE SHOWN IN U.S. SURVEY FEET.  
BEARINGS ARE FOR TIE REFERENCE PURPOSES ONLY.

Statements of evidence relative to this corner are on the following page(s).

I hereby certify that this document and the data contained herein was prepared by me or under my direct supervision this \_\_\_\_\_ day of \_\_\_\_\_, 20\_\_\_\_.

SIGNATURE

Minnesota License No. \_\_\_\_\_

- County Surveyor  
 Deputy County Surveyor     Land Surveyor

OFFICE OF COUNTY SURVEYOR

County of Ramsey

I hereby certify that this document was filed in the County Surveyor's office on the \_\_\_\_\_ day of \_\_\_\_\_, 20\_\_\_\_.

SIGNATURE

Michael D. Fiebiger, P.L.S.  
Ramsey County Surveyor

## MONUMENT 122

Found a granite monument down 0.2 ft.; placed a cast iron cap and bolt monument with concrete around it, May 21, 1974.

Retied monument, November 21, 1974.

Retied monument, January 31, 1992.

Found monument loose; removed, July 23, 1996.

Cast iron cap and bolt monument set in concrete, July 24, 1996.

Retied monument, September 23, 1999.

Retied monument, November 15, 2004.

Retied granite monument, November 9, 2009.