

# MONUMENT 120

## CERTIFICATE OF LOCATION OF GOVERNMENT CORNER

North Quarter Corner of Section 15, Township 30 North, Range 22 West, County of Ramsey, State of Minnesota.

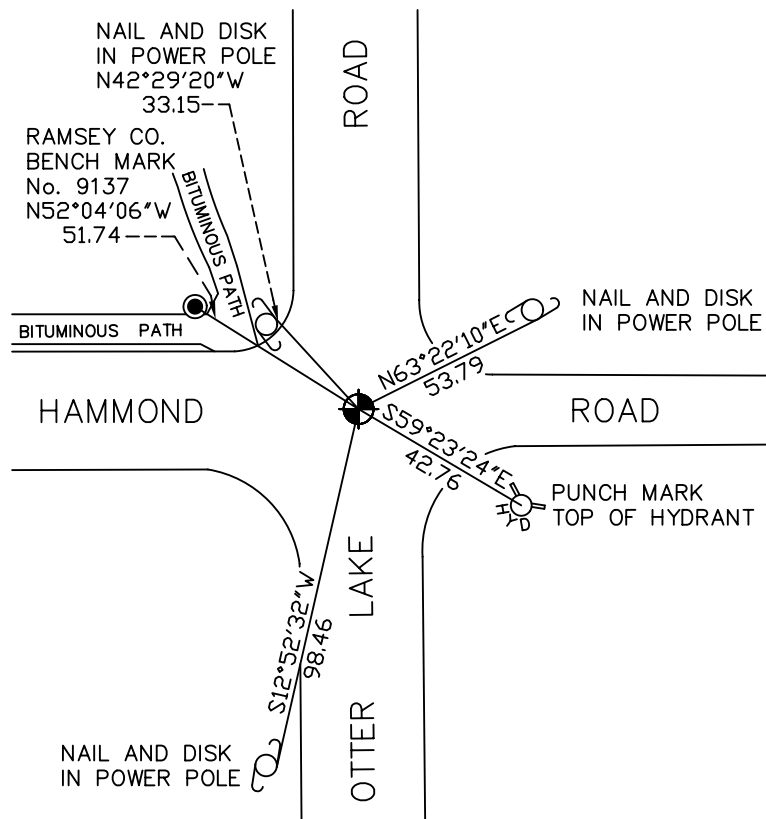
At the corner location shown on the sketch

On October 13, 2009 found a cast iron monument, down 0.2 feet.

left monument as found     lowered monument     removed monument (explain)

On \_\_\_\_\_ placed a \_\_\_\_\_

### SKETCH OF REFERENCE TIES



RAMSEY COUNTY  
NAD83 (1986)

MONUMENT 120

X= 589748.140 (Easting)  
Y= 210548.368 (Northing)

ALL DISTANCES ARE SHOWN IN U.S. SURVEY FEET.  
BEARINGS ARE FOR TIE REFERENCE PURPOSES ONLY.

Statements of evidence relative to this corner are on the following page(s).

I hereby certify that this document and the data contained herein was prepared by me or under my direct supervision this \_\_\_\_\_ day of \_\_\_\_\_, 20\_\_\_\_.

SIGNATURE

Minnesota License No. \_\_\_\_\_

- County Surveyor  
 Deputy County Surveyor     Land Surveyor

OFFICE OF COUNTY SURVEYOR

County of Ramsey

I hereby certify that this document was filed in the County Surveyor's office on the \_\_\_\_\_ day of \_\_\_\_\_, 20\_\_\_\_.

SIGNATURE

Michael D. Fiebiger, P.L.S.  
Ramsey County Surveyor

## MONUMENT 120

Found a granite monument, down 0.3 ft.; placed a cast iron cap and bolt monument and cemented into place, May 21, 1974.

Retied monument, June 20, 1974.

Removed cast iron cap and bolt during sewer construction; replaced with a 20 in. cast iron monument, May 7, 1979.

Retied monument, down 0.2 ft., September 21, 1989.

Retied monument, September 30, 1999.

Retied monument, September 24, 2004.

Retied monument, October 13, 2009.