

MONUMENT 738

CERTIFICATE OF LOCATION OF GOVERNMENT CORNER

South Quarter Corner of Section 13, Township 28 North, Range 22 West, County of Ramsey, State of Minnesota.

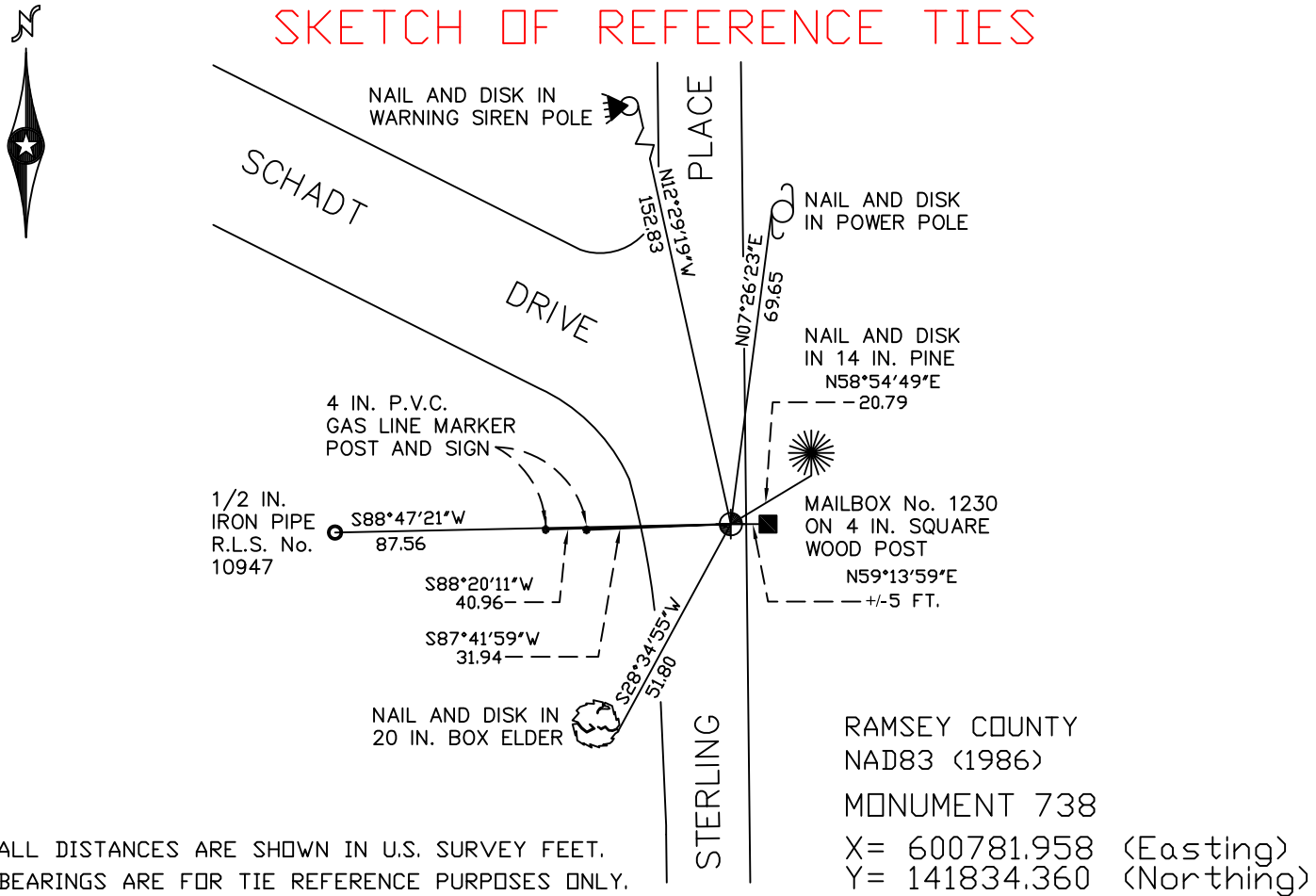
At the corner location shown on the sketch

On May 21, 2008 found a cast iron monument, flush.

left monument as found lowered monument removed monument (explain)

On _____ placed a _____

SKETCH OF REFERENCE TIES



ALL DISTANCES ARE SHOWN IN U.S. SURVEY FEET.
BEARINGS ARE FOR TIE REFERENCE PURPOSES ONLY.

RAMSEY COUNTY
NAD83 (1986)
MONUMENT 738

X= 600781.958 (Easting)
Y= 141834.360 (Northing)

Statements of evidence relative to this corner are on the following page(s).

I hereby certify that this document and the data contained herein was prepared by me or under my direct supervision this _____ day of _____, 20____.

SIGNATURE

Minnesota License No. _____

- County Surveyor
 Deputy County Surveyor Land Surveyor

OFFICE OF COUNTY SURVEYOR
County of Ramsey

I hereby certify that this document was filed in the County Surveyor's office on the ____ day of _____, 20____.

David D. Claypool, P.L.S., County Surveyor

By _____, Deputy

MONUMENT 738

Found a cast iron monument, down 6 inches and retied, August 6, 1974.

Frank Kvidera, of the County Highway Department, notes show granite monument underneath a cast iron monument marked "MINN HWY. DEPT. MONU.." Monument covered by 4 inches of bituminous. Set P.K. nails; monument down +/- 0.6 feet, August 9, 1989.

Tied monument, flush, January 7, 2003.

Retied monument, flush with bituminous, May 21, 2008.