

MONUMENT 670N

CERTIFICATE OF LOCATION OF GOVERNMENT CORNER

Northeast Corner of the Southeast Quarter of the Northeast Quarter of Section 12, Township 28 North, Range 22 West, County of Ramsey, State of Minnesota.

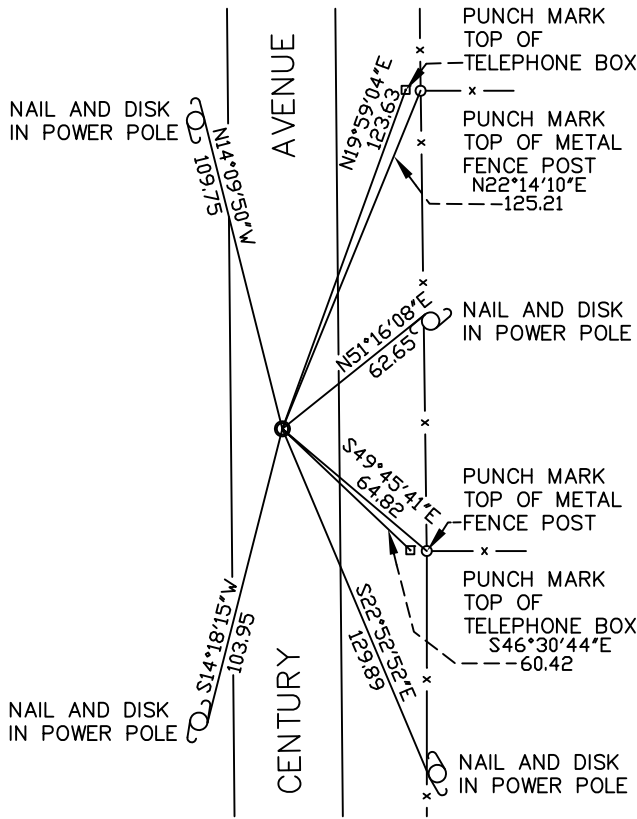
At the corner location shown on the sketch

On November 14, 2008 found a 1/2 inch open iron pipe, down 0.5 feet.

left monument as found lowered monument removed monument (explain)

On _____ placed a _____

SKETCH OF REFERENCE TIES



RAMSEY COUNTY
NAD83 (1986)
MONUMENT 670N

X= 603303.380 (Easting)
Y= 151113.870 (Northing)

ALL DISTANCES ARE SHOWN IN U.S. SURVEY FEET.
BEARINGS ARE FOR TIE REFERENCE PURPOSES ONLY.

Statements of evidence relative to this corner are on the following page(s).

I hereby certify that this document and the data contained herein was prepared by me or under my direct supervision this _____ day of _____, 20____.

SIGNATURE

Minnesota License No. _____

- County Surveyor
 Deputy County Surveyor Land Surveyor

OFFICE OF COUNTY SURVEYOR

County of Ramsey

I hereby certify that this document was filed in the County Surveyor's office on the ____ day of _____, 20____.

David D. Claypool, P.L.S., County Surveyor

By _____, Deputy

MONUMENT 670N

Found a boat spike down 3 inches, December 17, 1974.

Dug and found a granite monument with a chiseled "X" on top; down 3.75 feet. Placed a 1/2 inch diameter iron pipe over granite monument flush with road surface, no date given in field book.

Found a 1/2 inch diameter iron pipe down 0.5 feet; tied out, November 14, 2008.