

MONUMENT 623

CERTIFICATE OF LOCATION OF GOVERNMENT CORNER

Center of Section 1, Township 28 North, Range 22 West, County of Ramsey,
State of Minnesota.

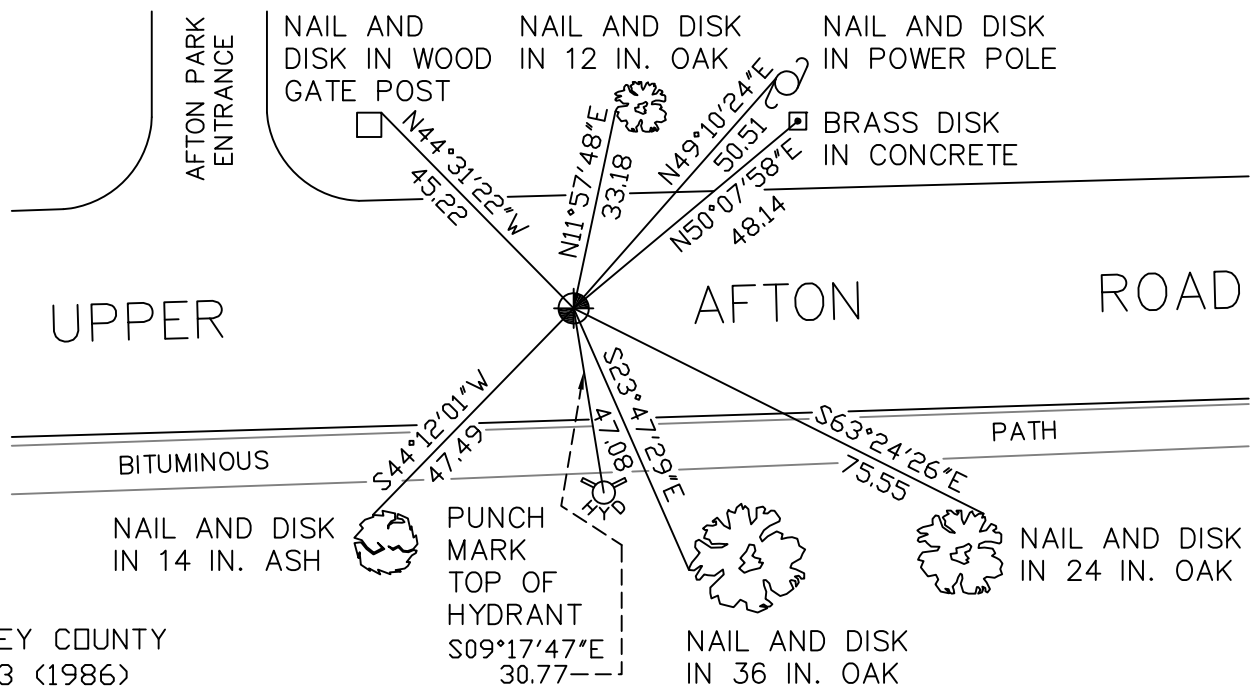
At the corner location shown on the sketch

On November 14, 2008 found a cast iron monument within a cast iron manhole assembly.

left monument as found, lowered monument, removed monument (explain)

On _____ placed a _____

SKETCH OF REFERENCE TIES



RAMSEY COUNTY
NAD83 (1986)

MONUMENT 623

X= 600628.253 (Easting)
Y= 154982.633 (Northing)

ALL DISTANCES ARE SHOWN IN U.S. SURVEY FEET.
BEARINGS ARE FOR TIE REFERENCE PURPOSES ONLY.

Statements of evidence relative to this corner are on the following page(s).

I hereby certify that this document and the data contained herein was prepared by me or under my direct supervision this _____ day of _____, 20____.

SIGNATURE

Minnesota License No. _____

- County Surveyor
 Deputy County Surveyor Land Surveyor

OFFICE OF COUNTY SURVEYOR

County of Ramsey

I hereby certify that this document was filed in the County Surveyor's office on the ____ day of _____, 20____.

David D. Claypool, P.L.S., County Surveyor

By _____, Deputy

MONUMENT 623

Found a granite monument down 2 in. and retied, August 2, 1974.

Ties checked, September 16, 1988.

Tied out monument for construction removal by City of Maplewood, no date given in field book.

Placed P.K. nails at position, November 9, 1990.

Placed a 24 in. cast iron monument and cemented in place; tied monument, August 27, 1991.

Retied monument, January 7, 2003.

Retied monument, September 7, 2007.

Tied out monument for removal during road reconstruction, July 30, 2008.

Set a P.K. nail at corner position, September 30, 2008.

Set a 20 in. cast iron monument within a cast iron manhole assembly, October 2, 2008.

Tied out monument, November 14, 2008.