

MONUMENT 576

CERTIFICATE OF LOCATION OF GOVERNMENT CORNER

West Quarter Corner of Section 36, Township 29 North, Range 22 West, County of Ramsey, State of Minnesota.

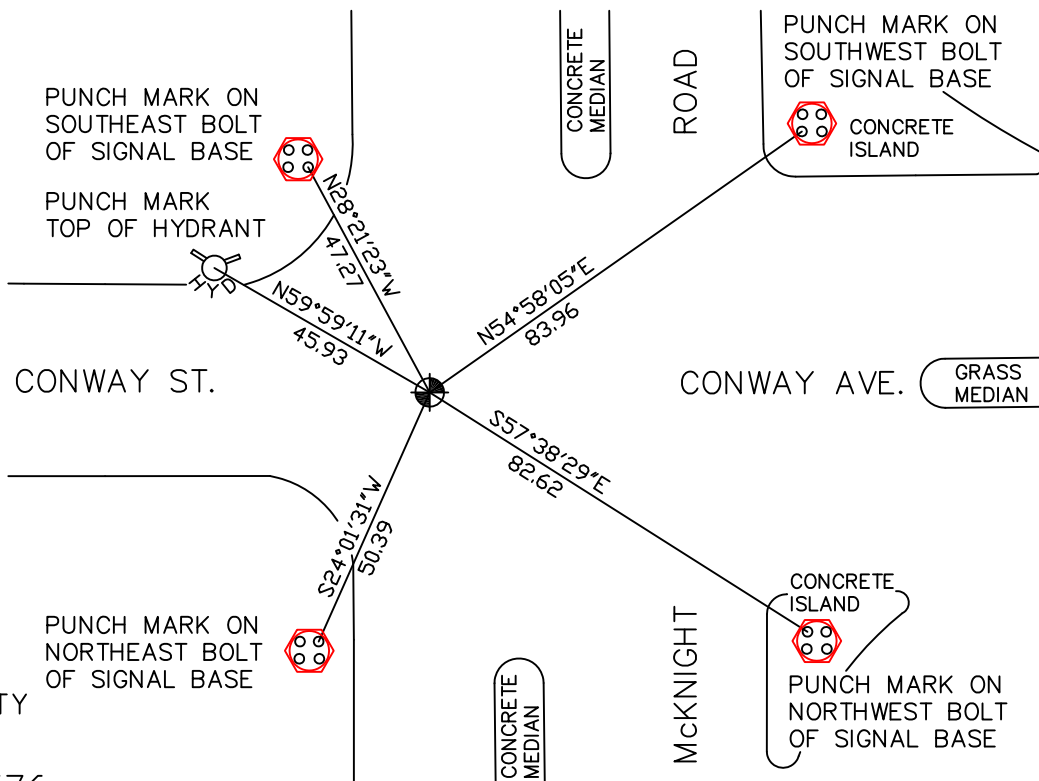
At the corner location shown on the sketch

On May 21, 2008 found a cast iron monument, flush.

left monument as found lowered monument removed monument (explain)

On _____ placed a _____

SKETCH OF REFERENCE TIES



RAMSEY COUNTY
NAD83 (1986)
MONUMENT 576

X= 597940.371 (Easting)
Y= 160290.184 (Northing)

ALL DISTANCES ARE SHOWN IN U.S. SURVEY FEET.
BEARINGS ARE FOR TIE REFERENCE PURPOSES ONLY.

Statements of evidence relative to this corner are on the following page(s).

I hereby certify that this document and the data contained herein was prepared by me or under my direct supervision this _____ day of _____, 20____.

SIGNATURE

Minnesota License No. _____

- County Surveyor
 Deputy County Surveyor Land Surveyor

OFFICE OF COUNTY SURVEYOR
County of Ramsey

I hereby certify that this document was filed in the County Surveyor's office on the ____ day of _____, 20____.

David D. Claypool, P.L.S., County Surveyor

By _____, Deputy

MONUMENT 576

Found a cast iron monument flush, May 8, 1975.

Tied out monument, June 8, 1990.

Monument destroyed by storm sewer construction. Relocated position and set P.K. nails and tied out, no date given in field book.

Set a 4 5/8 inch cast iron monument in concrete, November 20, 1991.

Tied out monument, found flush, April 15, 2003.

Retied monument, May 21, 2008.