

# MONUMENT 555

## CERTIFICATE OF LOCATION OF GOVERNMENT CORNER

Southeast Corner of Section 25, Township 29 North, Range 22 West, County of Ramsey, State of Minnesota.

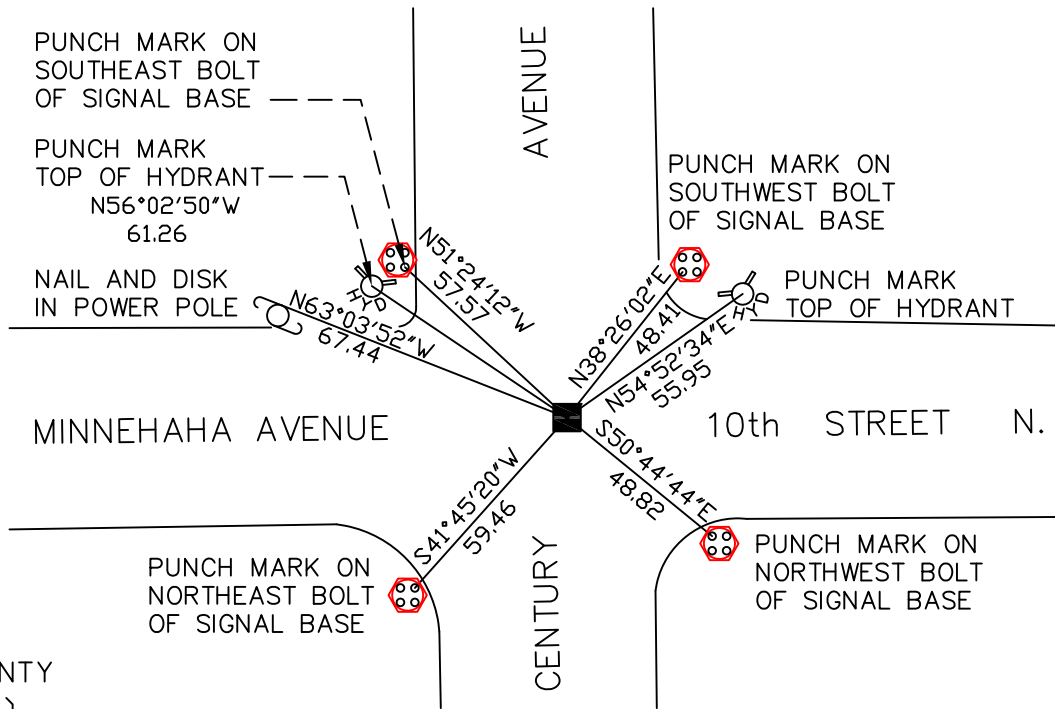
At the corner location shown on the sketch

On October 27, 2008 found a granite monument within a cast iron manhole assembly.

left monument as found     lowered monument     removed monument (explain)

On \_\_\_\_\_ placed a \_\_\_\_\_

## SKETCH OF REFERENCE TIES



RAMSEY COUNTY  
NAD83 (1986)

MONUMENT 555

X= 603178.173 (Easting)  
Y= 163015.276 (Northing)

ALL DISTANCES ARE SHOWN IN U.S. SURVEY FEET.  
BEARINGS ARE FOR TIE REFERENCE PURPOSES ONLY.

Statements of evidence relative to this corner are on the following page(s).

I hereby certify that this document and the data contained herein was prepared by me or under my direct supervision this \_\_\_\_\_ day of \_\_\_\_\_, 20\_\_\_\_.

SIGNATURE

Minnesota License No. \_\_\_\_\_

- County Surveyor  
 Deputy County Surveyor     Land Surveyor

OFFICE OF COUNTY SURVEYOR

County of Ramsey

I hereby certify that this document was filed in the County Surveyor's office on the \_\_\_\_ day of \_\_\_\_\_, 20\_\_\_\_.

David D. Claypool, P.L.S., County Surveyor

By \_\_\_\_\_, Deputy

## MONUMENT 555

Found an iron; removed and found a granite monument down 0.65 ft., July 20, 1976.

Set a short (4 5/8 in.) cast iron monument, August 2, 1976.

Tied monument, June 8, 1990.

Monument found down 2 in., October 1, 1999.

Retied monument, down +/- 2 in., April 16, 2003.

Removed short cast iron monument and placed a cast iron manhole assembly around granite monument, granite down 0.9 ft., June 28, 2005.

Tied out granite monument, October 27, 2008.