

# MONUMENT 554

## CERTIFICATE OF LOCATION OF GOVERNMENT CORNER

South Quarter Corner of Section 25, Township 29 North, Range 22 West, County of Ramsey, State of Minnesota.

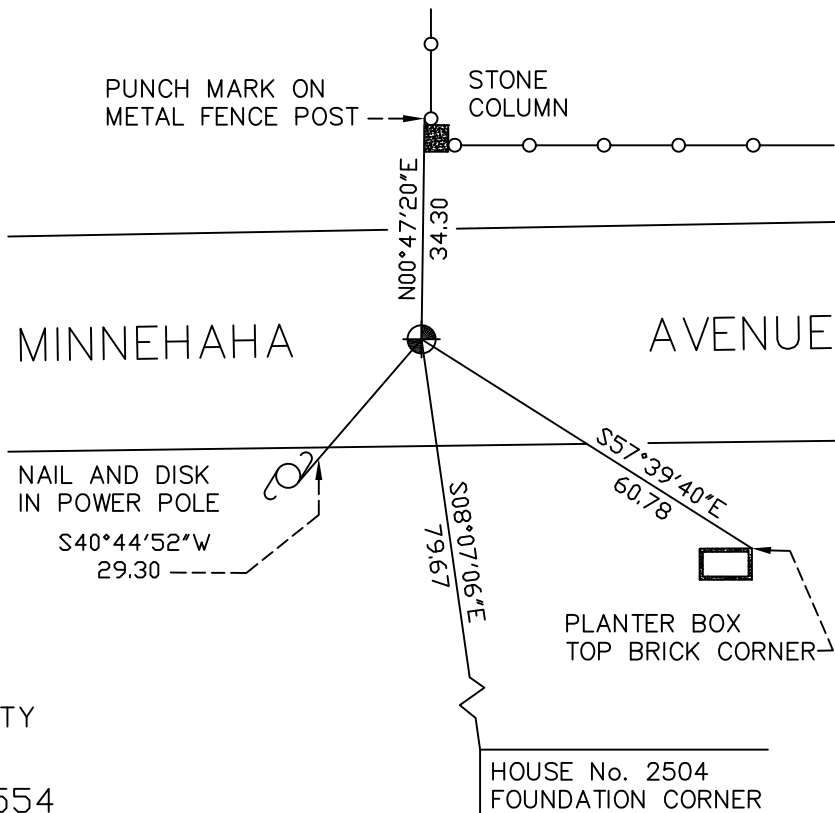
At the corner location shown on the sketch

On October 27, 2008 found a cast iron monument, down 0.05 feet.

left monument as found     lowered monument     removed monument (explain)

On \_\_\_\_\_ placed a \_\_\_\_\_

### SKETCH OF REFERENCE TIES



RAMSEY COUNTY  
NAD83 (1986)  
MONUMENT 554

X= 600544.214 (Easting)  
Y= 162956.037 (Northing)

HOUSE No. 2504  
FOUNDATION CORNER

ALL DISTANCES ARE SHOWN IN U.S. SURVEY FEET.  
BEARINGS ARE FOR TIE REFERENCE PURPOSES ONLY.

Statements of evidence relative to this corner are on the following page(s).

I hereby certify that this document and the data contained herein was prepared by me or under my direct supervision this \_\_\_\_\_ day of \_\_\_\_\_, 20\_\_\_\_.

SIGNATURE

Minnesota License No. \_\_\_\_\_

- County Surveyor  
 Deputy County Surveyor     Land Surveyor

OFFICE OF COUNTY SURVEYOR  
County of Ramsey

I hereby certify that this document was filed in the County Surveyor's office on the \_\_\_\_ day of \_\_\_\_\_, 20\_\_\_\_.

David D. Claypool, P.L.S., County Surveyor

By \_\_\_\_\_, Deputy

## MONUMENT 554

Found a 2 1/2 in. solid iron, down 4 in.; dug +/- 4 ft. and found nothing. Set a cast iron monument, August 26, 1976.

Tied monument, April 17, 1990.

Monument broken by road maintenance project, September, 1990.

Placed a 20 in. cast iron monument, November 2, 1990.

Tied monument, found flush, April 15, 2003.

Retied monument, down 0.05 ft., October 27, 2008.