

# MONUMENT 486

## CERTIFICATE OF LOCATION OF GOVERNMENT CORNER

East Quarter Corner of Section 24, Township 29 North, Range 22 West, County of Ramsey, State of Minnesota.

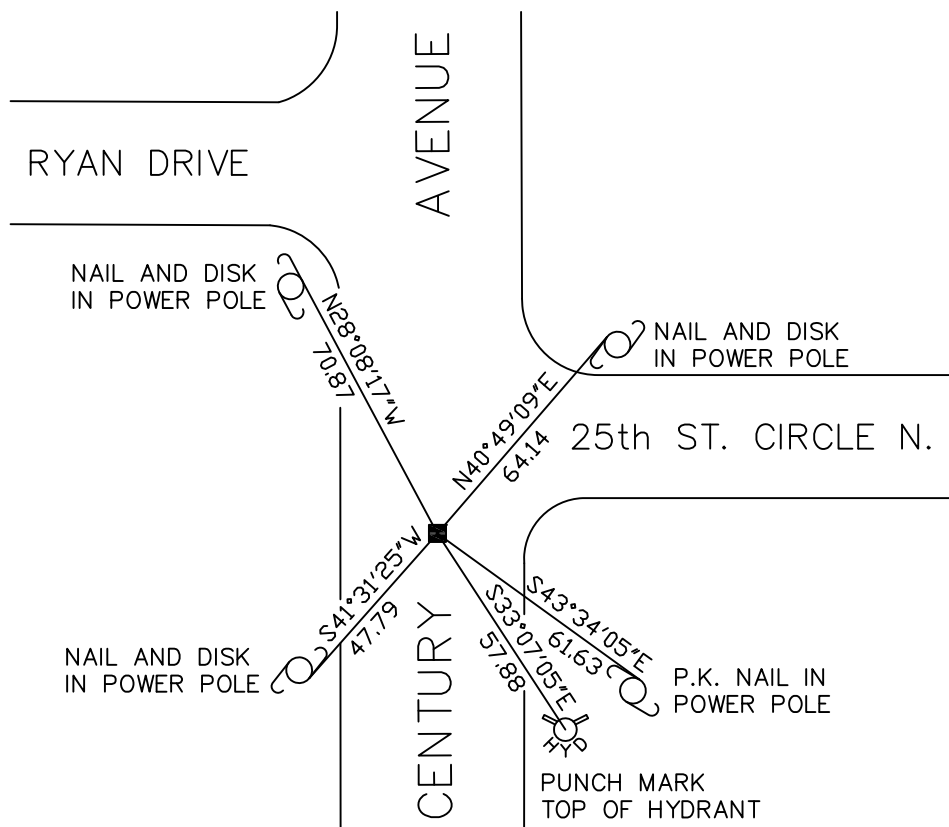
At the corner location shown on the sketch

On October 24, 2008 found a granite monument within a cast iron manhole assembly.

left monument as found     lowered monument     removed monument (explain)

On \_\_\_\_\_ placed a \_\_\_\_\_

### SKETCH OF REFERENCE TIES



RAMSEY COUNTY  
NAD83 (1986)  
MONUMENT 486

X= 603147.612 (Easting)  
Y= 170954.743 (Northing)

ALL DISTANCES ARE SHOWN IN U.S. SURVEY FEET.  
BEARINGS ARE FOR TIE REFERENCE PURPOSES ONLY.

Statements of evidence relative to this corner are on the following page(s).

I hereby certify that this document and the data contained herein was prepared by me or under my direct supervision this \_\_\_\_\_ day of \_\_\_\_\_, 20\_\_\_\_.

SIGNATURE

Minnesota License No. \_\_\_\_\_

- County Surveyor  
 Deputy County Surveyor     Land Surveyor

OFFICE OF COUNTY SURVEYOR  
County of Ramsey

I hereby certify that this document was filed in the County Surveyor's office on the \_\_\_\_ day of \_\_\_\_\_, 20\_\_\_\_.

David D. Claypool, P.L.S., County Surveyor

By \_\_\_\_\_, Deputy

## MONUMENT 486

Found a granite monument down 0.68 ft.; set a short cast iron, September, 1974.

Monument checked, July 16, 1984.

Tied cast iron monument; down 0.35 ft., September 24, 1993.

Retied monument, April 15, 2003.

Removed short cast iron monument and placed a 12 in. dia. P.V.C. pipe and cast iron manhole assembly around the granite monument, June 24, 2005.

Tied granite monument, October 24, 2008.