

MONUMENT 432

CERTIFICATE OF LOCATION OF GOVERNMENT CORNER

West Quarter Corner of Section 16, Township 29 North, Range 22 West, County of Ramsey, State of Minnesota.

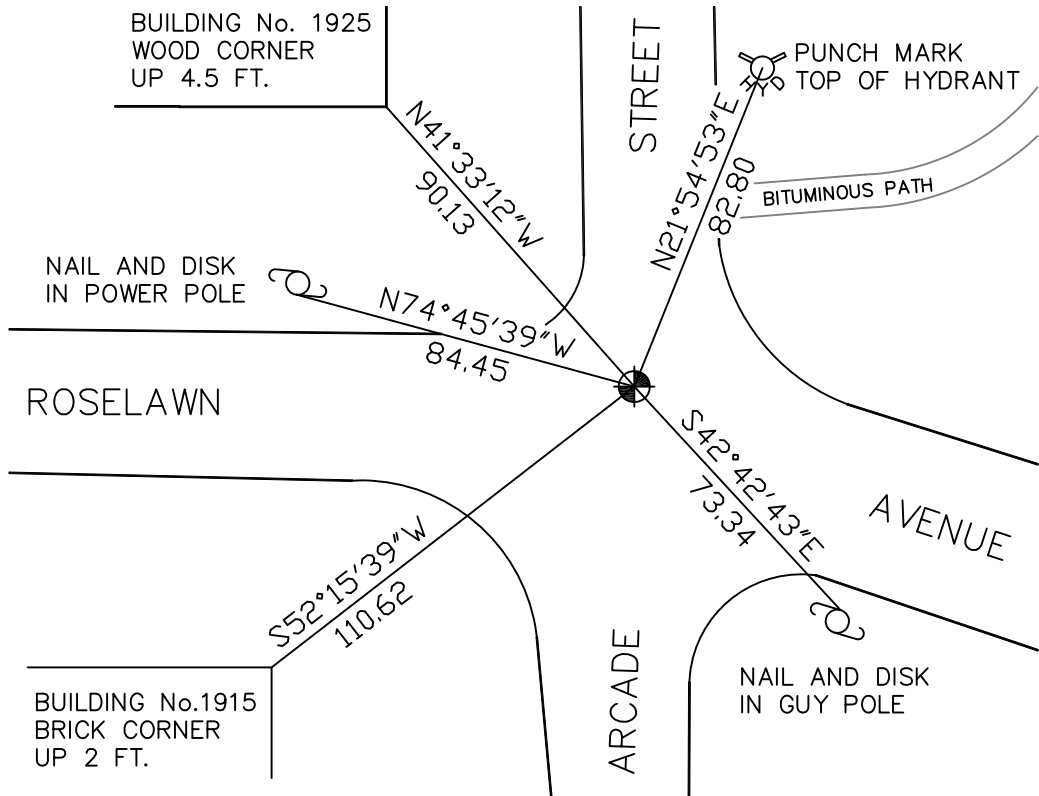
At the corner location shown on the sketch

On April 9, 2008 found a cast iron monument, flush.

left monument as found lowered monument removed monument (explain)

On _____ placed a _____

SKETCH OF REFERENCE TIES



RAMSEY COUNTY
NAD83 (1986)

MONUMENT 432

X= 582055.435 (Easting)
Y= 176031.809 (Northing)

ALL DISTANCES ARE SHOWN IN U.S. SURVEY FEET.
BEARINGS ARE FOR TIE REFERENCE PURPOSES ONLY.

Statements of evidence relative to this corner are on the following page(s).

I hereby certify that this document and the data contained herein was prepared by me or under my direct supervision this _____ day of _____, 20____.

SIGNATURE

Minnesota License No. _____

- County Surveyor
 Deputy County Surveyor Land Surveyor

OFFICE OF COUNTY SURVEYOR

County of Ramsey

I hereby certify that this document was filed in the County Surveyor's office on the ____ day of _____, 20____.

David D. Claypool, P.L.S., County Surveyor

By _____, Deputy

MONUMENT 432

Found a cast iron monument, flush and retied, September 6, 1974.

Removed monument, May, 1992.

Placed a 20 inch cast iron monument, October 13, 1992.

Retied monument, November 6, 2002.

Concrete maintenance around monument, August, 2006.

Retied monument, April 9, 2008.