

# MONUMENT 415

## CERTIFICATE OF LOCATION OF GOVERNMENT CORNER

Northeast Corner of Section 14, Township 29 North, Range 22 West, County of Ramsey, State of Minnesota.

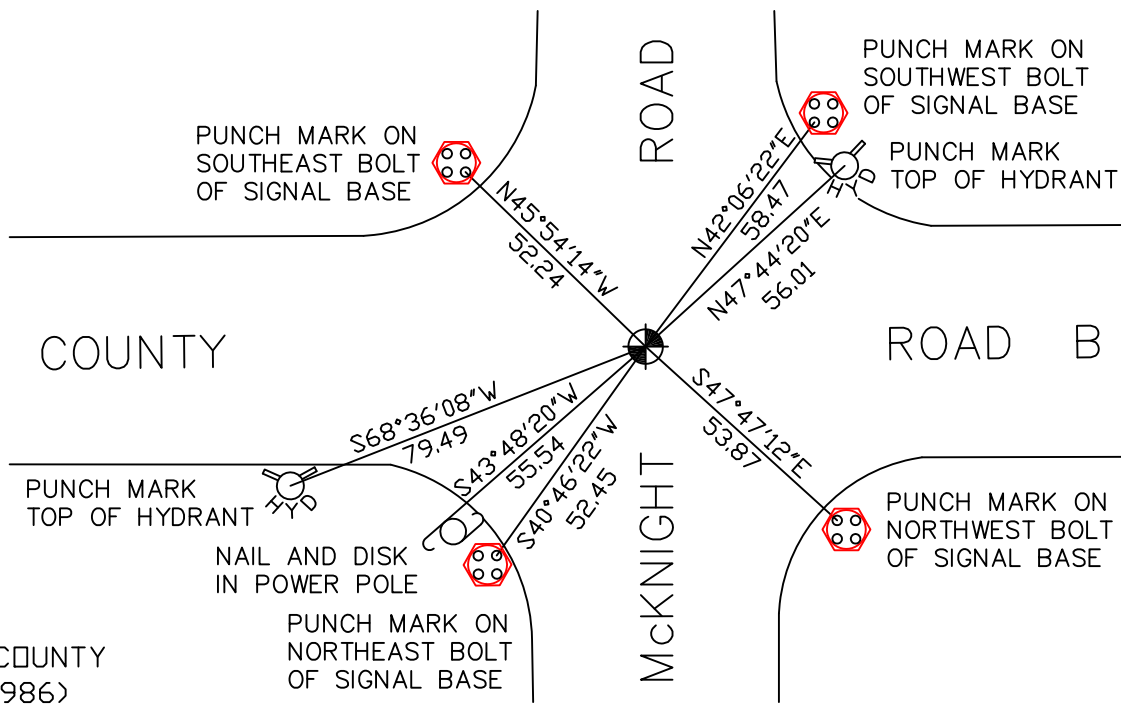
At the corner location shown on the sketch

On October 17, 2008 found a cast iron monument within a cast iron manhole assembly.

left monument as found     lowered monument     removed monument (explain)

On \_\_\_\_\_ placed a \_\_\_\_\_

### SKETCH OF REFERENCE TIES



RAMSEY COUNTY  
NAD83 (1986)

MONUMENT 415

X= 597866.365 (Easting)  
Y= 178735.734 (Northing)

ALL DISTANCES ARE SHOWN IN U.S. SURVEY FEET.  
BEARINGS ARE FOR TIE REFERENCE PURPOSES ONLY.

Statements of evidence relative to this corner are on the following page(s).

I hereby certify that this document and the data contained herein was prepared by me or under my direct supervision this \_\_\_\_\_ day of \_\_\_\_\_, 20\_\_\_\_.

SIGNATURE

Minnesota License No. \_\_\_\_\_

- County Surveyor  
 Deputy County Surveyor     Land Surveyor

OFFICE OF COUNTY SURVEYOR

County of Ramsey

I hereby certify that this document was filed in the County Surveyor's office on the \_\_\_\_ day of \_\_\_\_\_, 20\_\_\_\_.

David D. Claypool, P.L.S., County Surveyor

By \_\_\_\_\_, Deputy

## MONUMENT 415

Found a broken cast iron monument down 0.2 ft.; set a new cast iron monument, May 6, 1976.

Checked and tied out monument, July 18, 1984.

Tied out monument before McKnight Road project, 1988.

Replaced monument, November 6, 1990.

Tied monument, October 19, 2000.

Lowered monument below grade for County Maintenance milling; set tube, July 22, 2003.

Replaced tube and set a cast iron manhole assembly, August 19, 2003.

Tied out monument for removal during sewer construction, August 22, 2006.

Reset cast iron monument within a cast iron manhole assembly, October 25, 2006.

Tied monument, October 17, 2008.