

MONUMENT 409

CERTIFICATE OF LOCATION OF GOVERNMENT CORNER

Northwest Corner of Section 16, Township 29 North, Range 22 West, County of Ramsey, State of Minnesota.

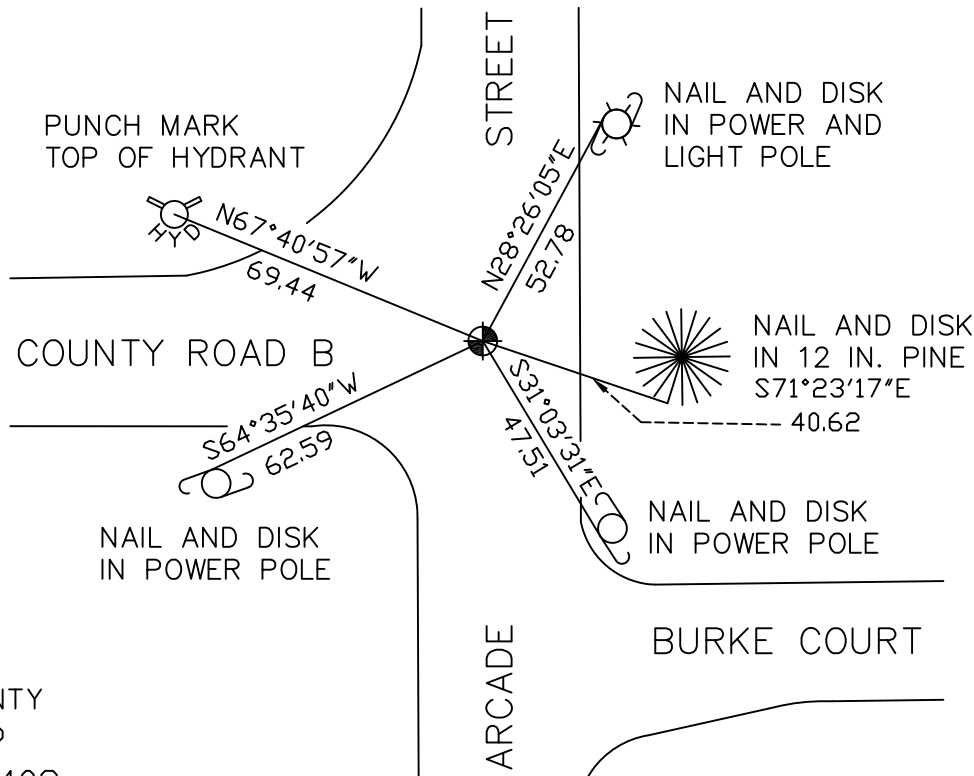
At the corner location shown on the sketch

On April 9, 2008 found a cast iron monument, flush.

left monument as found lowered monument removed monument (explain)

On _____ placed a _____

SKETCH OF REFERENCE TIES



RAMSEY COUNTY
NAD83 (1986)
MONUMENT 409

X= 582041.977 (Easting)
Y= 178658.854 (Northing)

ALL DISTANCES ARE SHOWN IN U.S. SURVEY FEET.
BEARINGS ARE FOR TIE REFERENCE PURPOSES ONLY.

Statements of evidence relative to this corner are on the following page(s).

I hereby certify that this document and the data contained herein was prepared by me or under my direct supervision this _____ day of _____, 20____.

SIGNATURE

Minnesota License No. _____

- County Surveyor
 Deputy County Surveyor Land Surveyor

OFFICE OF COUNTY SURVEYOR
County of Ramsey

I hereby certify that this document was filed in the County Surveyor's office on the ____ day of _____, 20____.

David D. Claypool, P.L.S., County Surveyor

By _____, Deputy

MONUMENT 409

Found a cast iron monument, flush and retied, September 6, 1974.

Checked and retied monument, August 16, 1984.

City of Maplewood Water Department destroyed monument, August 13, 1991.

Set P.K. nails and checked location and tied out, June 23, 1992.

Set a 20 inch cast iron monument, October 13, 1992.

Removed a 20 inch cast iron monument for maintenance, April 1, 1997.

Set a 20 inch cast iron monument, August 27, 1997.

Retied monument, December 30, 2002.

Retied monument, April 9, 2008.