

# MONUMENT 31

## CERTIFICATE OF LOCATION OF GOVERNMENT CORNER

Center of Section 4, Township 30 North, Range 23 West, County of Ramsey,  
State of Minnesota.

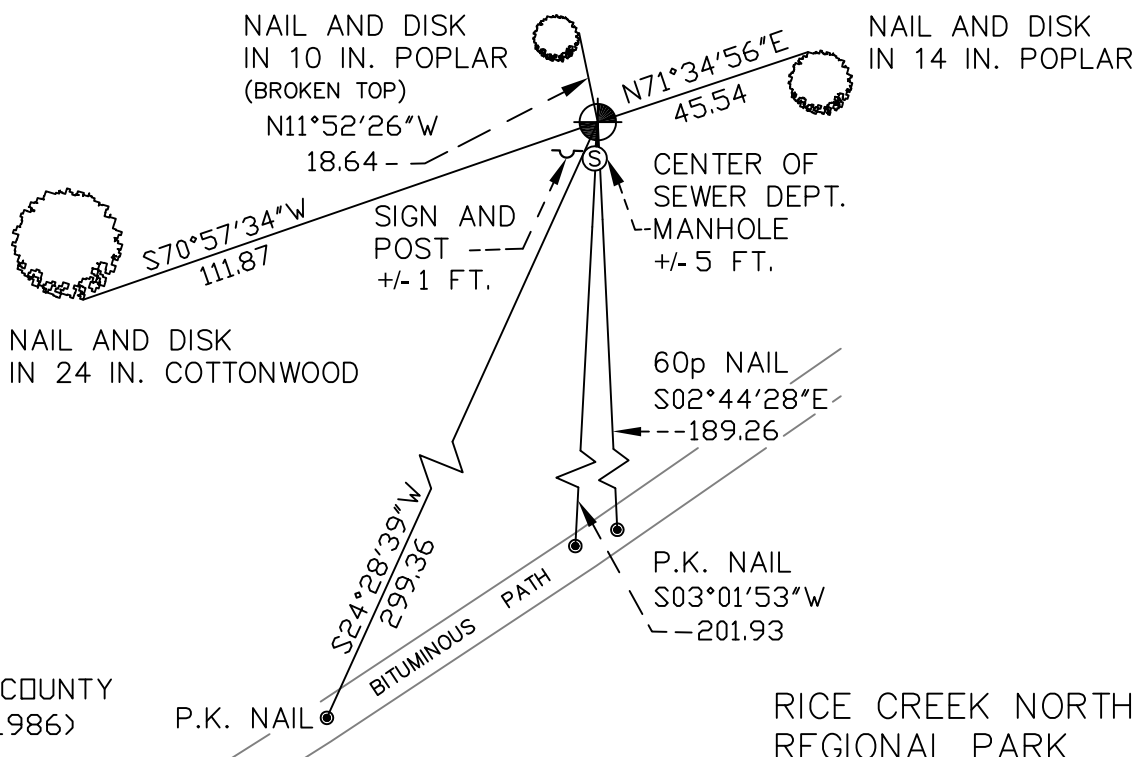
At the corner location shown on the sketch

On October 31, 2008 found a cast iron monument, flush.

left monument as found     lowered monument     removed monument (explain)

On \_\_\_\_\_ placed a \_\_\_\_\_

### SKETCH OF REFERENCE TIES



RAMSEY COUNTY  
NAD83 (1986)  
MONUMENT 31

RICE CREEK NORTH  
REGIONAL PARK

X= 552901.732 (Easting)  
Y= 218254.367 (Northing)

ALL DISTANCES ARE SHOWN IN U.S. SURVEY FEET.  
BEARINGS ARE FOR TIE REFERENCE PURPOSES ONLY.

Statements of evidence relative to this corner are on the following page(s).

I hereby certify that this document and the data contained herein was prepared by me or under my direct supervision this \_\_\_\_\_ day of \_\_\_\_\_, 20\_\_\_\_.

SIGNATURE

Minnesota License No. \_\_\_\_\_

- County Surveyor  
 Deputy County Surveyor     Land Surveyor

OFFICE OF COUNTY SURVEYOR  
County of Ramsey

I hereby certify that this document was filed in the County Surveyor's office on the \_\_\_\_ day of \_\_\_\_\_, 20\_\_\_\_.

David D. Claypool, P.L.S., County Surveyor

By \_\_\_\_\_, Deputy

# MONUMENT 31

Found a granite monument, flush, August 23, 1974.

Retied monument, November 27, 1974.

Looked for granite monument and did not find, June 11, 1992.

Set a 20 inch cast iron monument using coordinates; placed a sign and post; tied out monument, June 18, 1992.

Retied monument; sign and post +/- 1 ft. south, July 9, 2003.

Retied monument, flush, October 31, 2008.