

# MONUMENT 307E

## CERTIFICATE OF LOCATION OF GOVERNMENT CORNER

Meander Corner No. 14 on the South line of the Southwest Quarter of Section 34, Township 30 North, Range 23 West, County of Ramsey, State of Minnesota.

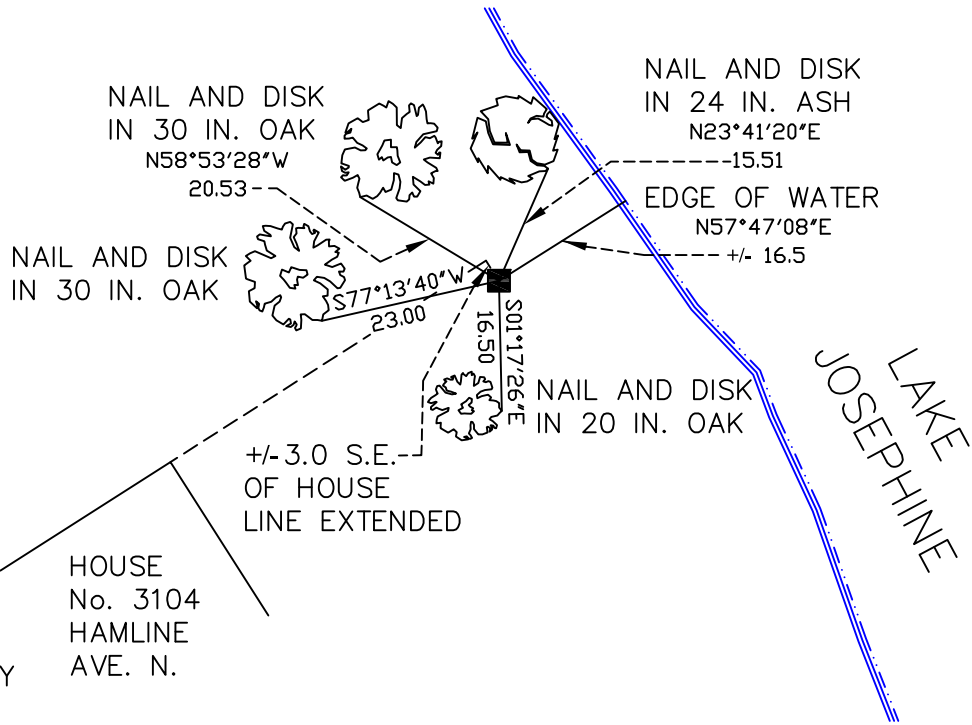
At the corner location shown on the sketch

On April 30, 2008 found a granite monument, flush.

left monument as found     lowered monument     removed monument (explain)

On \_\_\_\_\_ placed a \_\_\_\_\_

### SKETCH OF REFERENCE TIES



RAMSEY COUNTY  
NAD83 (1986)

MONUMENT 307E

X= 558153.929 (Easting)  
Y= 189276.356 (Northing)

ALL DISTANCES ARE SHOWN IN U.S. SURVEY FEET.  
BEARINGS ARE FOR TIE REFERENCE PURPOSES ONLY.

Statements of evidence relative to this corner are on the following page(s).

I hereby certify that this document and the data contained herein was prepared by me or under my direct supervision this \_\_\_\_\_ day of \_\_\_\_\_, 20\_\_\_\_.

SIGNATURE

Minnesota License No. \_\_\_\_\_

- County Surveyor  
 Deputy County Surveyor     Land Surveyor

OFFICE OF COUNTY SURVEYOR

County of Ramsey

I hereby certify that this document was filed in the County Surveyor's office on the \_\_\_\_ day of \_\_\_\_\_, 20\_\_\_\_.

David D. Claypool, P.L.S., County Surveyor

By \_\_\_\_\_, Deputy

# MONUMENT 307E

Found a granite monument flush and tied, July 29, 1974.

Found a granite monument flush and retied, October 11, 1984.

Found a granite monument flush and retied, March 5, 1993.

Found a granite monument flush and retied, December 2, 2002.

Found a granite monument flush and retied, April 30, 2008.