

MONUMENT 295

CERTIFICATE OF LOCATION OF GOVERNMENT CORNER

Center of Section 34, Township 30 North, Range 22 West, County of Ramsey,
State of Minnesota.

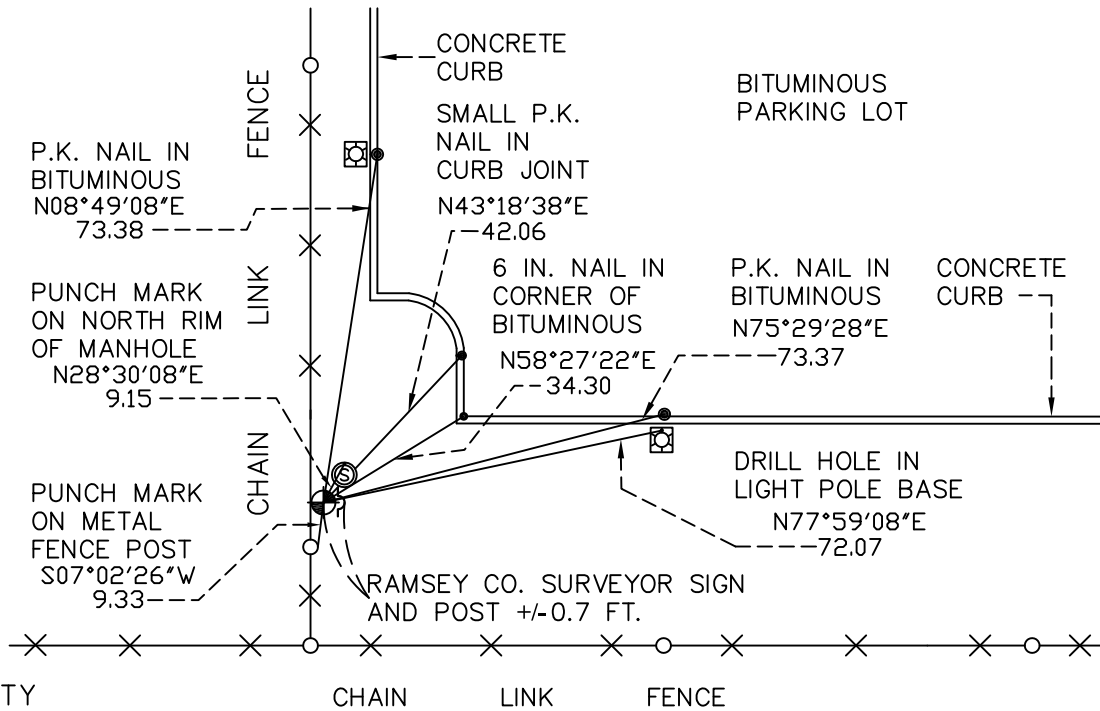
At the corner location shown on the sketch

On September 5, 2008 found a cast iron monument, down 0.3 feet.

left monument as found lowered monument removed monument (explain)

On _____ placed a _____

SKETCH OF REFERENCE TIES



RAMSEY COUNTY
NAD83 (1986)

MONUMENT 295

X= 589839.208 (Easting)
Y= 192053.774 (Northing)

ALL DISTANCES ARE SHOWN IN U.S. SURVEY FEET.
BEARINGS ARE FOR TIE REFERENCE PURPOSES ONLY.

Statements of evidence relative to this corner are on the following page(s).

I hereby certify that this document and the data contained herein was prepared by me or under my direct supervision this _____ day of _____, 20____.

SIGNATURE

Minnesota License No. _____

- County Surveyor
 Deputy County Surveyor Land Surveyor

OFFICE OF COUNTY SURVEYOR
County of Ramsey

I hereby certify that this document was filed in the County Surveyor's office on the ____ day of _____, 20____.

David D. Claypool, P.L.S., County Surveyor

By _____, Deputy

MONUMENT 295

Found a granite monument down +/- 0.4 ft., June 24, 1977.

Found a granite monument, fence laying down in most places, 1991.

Found a granite monument, down 0.5 ft; set post and sign on east edge of monument, September 18, 1996.

Retied granite monument found down +/- 0.7 ft., April 29, 2003.

Watershed District graded area for pipe and ponding area, no date given in field book.

Relocated position and set a 20 in. cast iron monument and sign and post, retied, November 19, 2003.

Retied monument, down 0.3 ft., September 5, 2008.