

MONUMENT 269

CERTIFICATE OF LOCATION OF GOVERNMENT CORNER

Southeast Corner of Section 28, Township 30 North, Range 22 West, County of Ramsey, State of Minnesota.

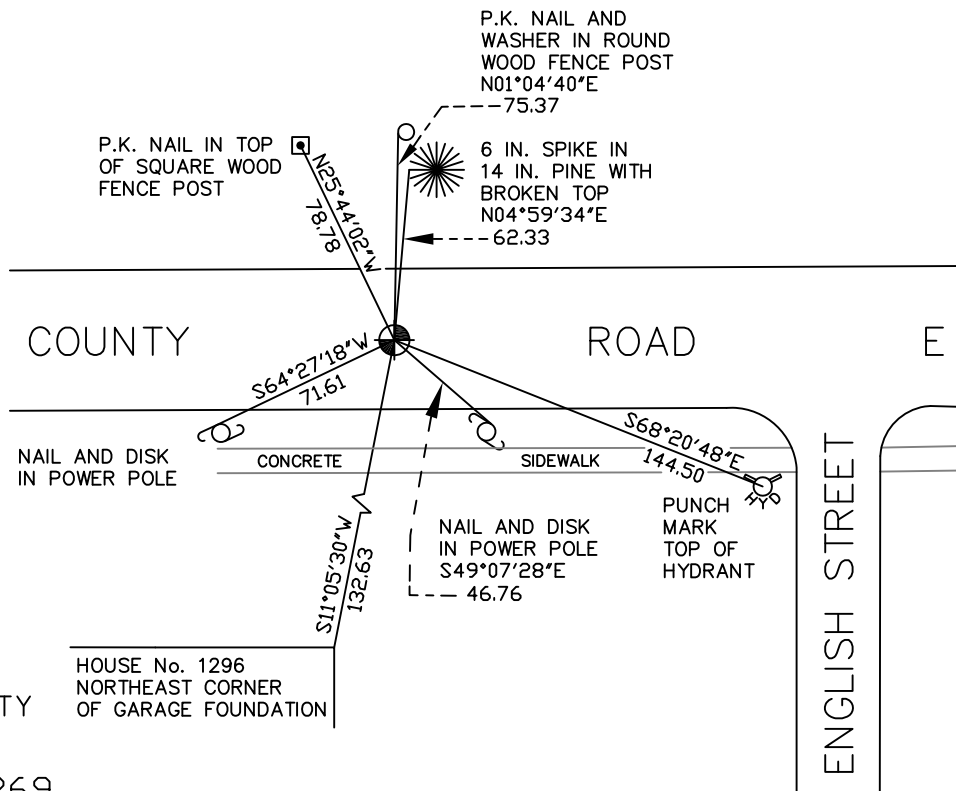
At the corner location shown on the sketch

On May 9, 2008 found a cast iron monument within a cast iron manhole assembly.

left monument as found lowered monument removed monument (explain)

On _____ placed a _____

SKETCH OF REFERENCE TIES



RAMSEY COUNTY
NAD83 (1986)

MONUMENT 269

X= 587199.070 (Easting)
Y= 194691.977 (Northing)

ALL DISTANCES ARE SHOWN IN U.S. SURVEY FEET.
BEARINGS ARE FOR TIE REFERENCE PURPOSES ONLY.

Statements of evidence relative to this corner are on the following page(s).

I hereby certify that this document and the data contained herein was prepared by me or under my direct supervision this _____ day of _____, 20____.

SIGNATURE

Minnesota License No. _____

- County Surveyor
 Deputy County Surveyor Land Surveyor

OFFICE OF COUNTY SURVEYOR

County of Ramsey

I hereby certify that this document was filed in the County Surveyor's office on the ____ day of _____, 20____.

David D. Claypool, P.L.S., County Surveyor

By _____, Deputy

MONUMENT 269

Found a 2 in. solid iron, down 1 in., May 15, 1975.

Ramsey County construction destroyed monument; set a 20 in. cast iron monument, 1977.

Retied monument, January 9, 1992.

Milling operation ground off top of monument. Removed monument; set a 20 in. cast iron monument and cast iron manhole assembly, July 22, 1998.

Retied monument, September 22, 1999.

Retied monument, October 27, 2005.

Retied monument, May 9, 2008.