

MONUMENT 257

CERTIFICATE OF LOCATION OF GOVERNMENT CORNER

Southwest Corner of Section 27, Township 30 North, Range 23 West, County of Ramsey, State of Minnesota.

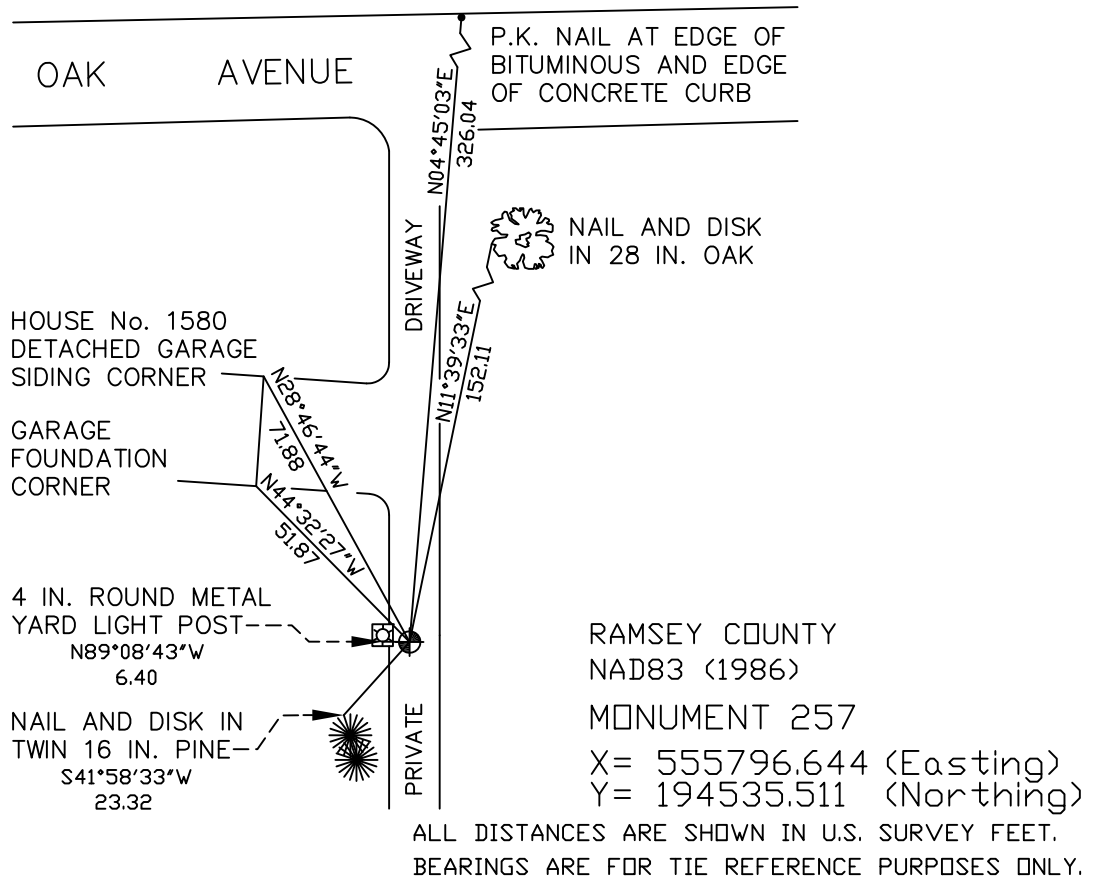
At the corner location shown on the sketch

On April 30, 2008 found a cast iron monument, flush.

left monument as found lowered monument removed monument (explain)

On _____ placed a _____

SKETCH OF REFERENCE TIES



Statements of evidence relative to this corner are on the following page(s).

I hereby certify that this document and the data contained herein was prepared by me or under my direct supervision this _____ day of _____, 20____.

SIGNATURE

Minnesota License No. _____

- County Surveyor
 Deputy County Surveyor Land Surveyor

OFFICE OF COUNTY SURVEYOR

County of Ramsey

I hereby certify that this document was filed in the County Surveyor's office on the ____ day of _____, 20____.

David D. Claypool, P.L.S., County Surveyor

By _____, Deputy

MONUMENT 257

Found a granite monument down +/- 0.3 ft., 1975.

Granite monument down +/- 4 inches in bituminous driveway edge, retied, October 8, 1985.

Short (4 5/8 in.) cast iron monument placed on top of granite monument; retied, November 13, 2002.

Retied cast iron monument, found flush, April 30, 2008.