

# MONUMENT 253

## CERTIFICATE OF LOCATION OF GOVERNMENT CORNER

Southeast Corner of Section 30, Township 30 North, Range 23 West, County of Ramsey, State of Minnesota.

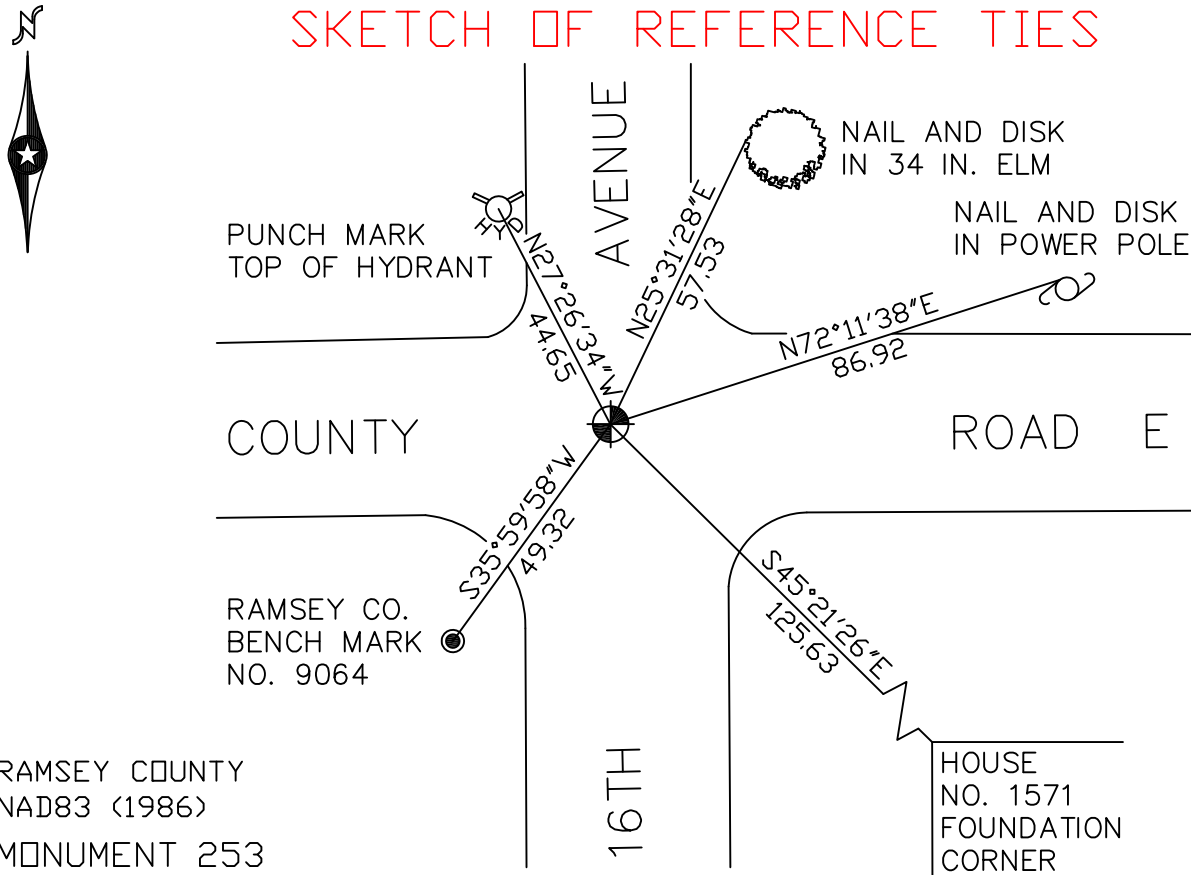
At the corner location shown on the sketch

On September 15, 2008 found a cast iron monument, flush.

left monument as found     lowered monument     removed monument (explain)

On \_\_\_\_\_ placed a \_\_\_\_\_

### SKETCH OF REFERENCE TIES



RAMSEY COUNTY  
NAD83 (1986)  
MONUMENT 253

X= 545278.114 (Easting)  
Y= 194502.056 (Northing)

ALL DISTANCES ARE SHOWN IN U.S. SURVEY FEET.  
BEARINGS ARE FOR TIE REFERENCE PURPOSES ONLY.

Statements of evidence relative to this corner are on the following page(s).

I hereby certify that this document and the data contained herein was prepared by me or under my direct supervision this \_\_\_\_\_ day of \_\_\_\_\_, 20\_\_\_\_.

SIGNATURE

Minnesota License No. \_\_\_\_\_

- County Surveyor  
 Deputy County Surveyor     Land Surveyor

#### OFFICE OF COUNTY SURVEYOR

County of Ramsey

I hereby certify that this document was filed in the County Surveyor's office on the \_\_\_\_ day of \_\_\_\_\_, 20\_\_\_\_.

David D. Claypool, P.L.S., County Surveyor

By \_\_\_\_\_, Deputy

## MONUMENT 253

Found a cast iron monument flush and tied, July 12, 1974.

Found a cast iron monument flush, retied, June 18, 1991.

Tied out monument and removed, August 12, 1991.

Set a 20 in. cast iron monument, October 14, 1992.

Retied monument, November 1, 2002.

Retied monument, September 15, 2008.