

MONUMENT 211N

CERTIFICATE OF LOCATION OF GOVERNMENT CORNER

Meander Corner No. 10 on the East line of Section 23, Township 30 North, Range 23 West, County of Ramsey, State of Minnesota.

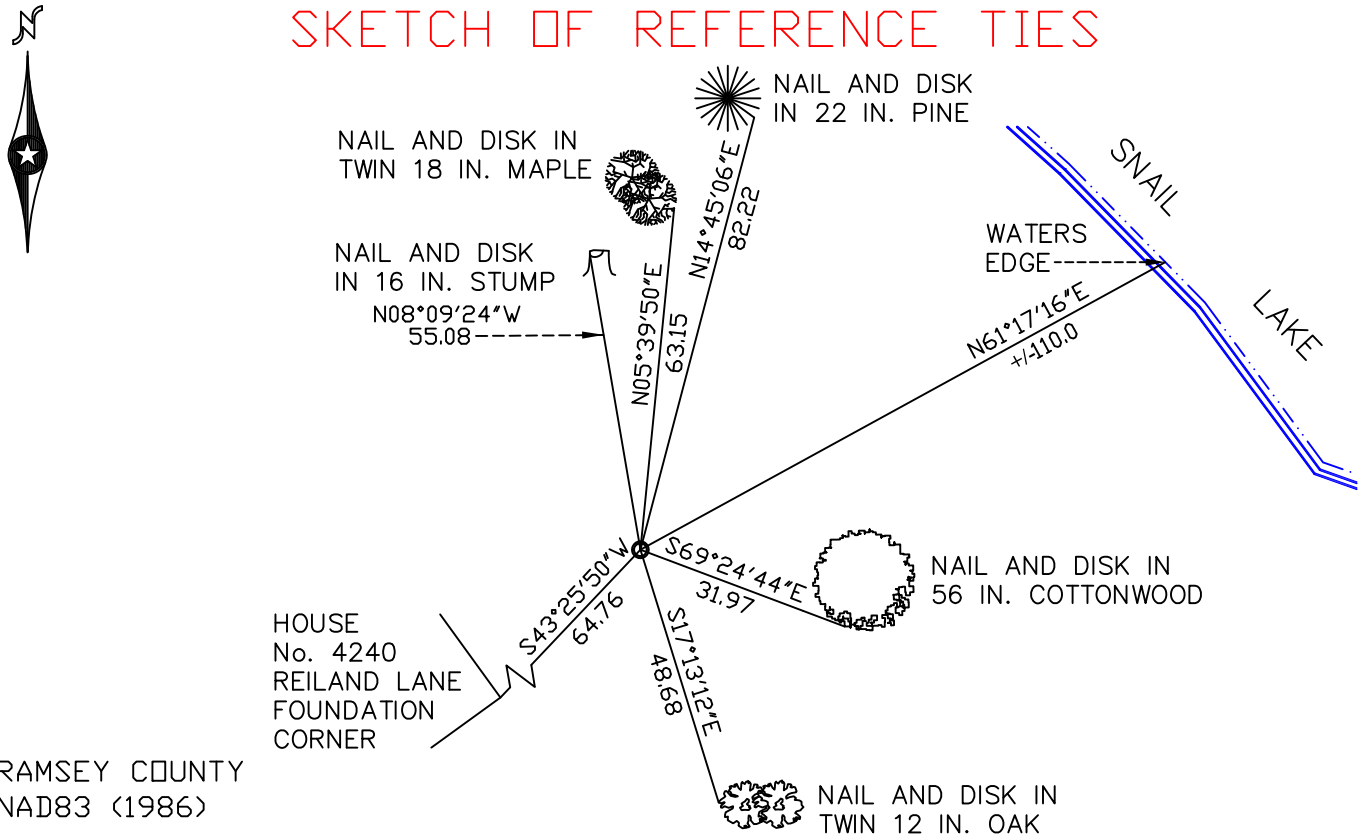
At the corner location shown on the sketch

On April 16, 2008 found a granite monument, down 2.7 feet.

left monument as found lowered monument removed monument (explain)

On April 18, 2008 placed a 1/2 inch iron pipe over the top of the granite monument.

SKETCH OF REFERENCE TIES



RAMSEY COUNTY
NAD83 (1986)
MONUMENT 211N

X= 566278.629 (Easting)
Y= 201719.269 (Northing)

ALL DISTANCES ARE SHOWN IN U.S. SURVEY FEET.
BEARINGS ARE FOR TIE REFERENCE PURPOSES ONLY.

Statements of evidence relative to this corner are on the following page(s).

I hereby certify that this document and the data contained herein was prepared by me or under my direct supervision this _____ day of _____, 20____.

SIGNATURE

Minnesota License No. _____

- County Surveyor
 Deputy County Surveyor Land Surveyor

OFFICE OF COUNTY SURVEYOR
County of Ramsey

I hereby certify that this document was filed in the County Surveyor's office on the ____ day of _____, 20____.

David D. Claypool, P.L.S., County Surveyor

By _____, Deputy

MONUMENT 211N

Found a granite monument, April 25, 1977.

Found a granite monument down 1.7 ft. and placed a cast iron monument on top; tied monument, October 1, 1982.

Ernie Rud and Associates found a granite monument, April, 1999.

Ernie Rud and Associates set an iron over granite monument, July 10, 2002.

Tied monument, November 25, 2002.

Found 1/2 inch iron pipe, RLS No. 9808. Monument ties did not check; found lawn sprinkler installation had disturbed iron pipe. Dug down 2.7 ft. and found granite monument, April 16, 2008.

Re-set 1/2 inch iron pipe over the top of the granite monument and tied, April 18, 2008.