

# MONUMENT 210

## CERTIFICATE OF LOCATION OF GOVERNMENT CORNER

South Quarter Corner of Section 23, Township 30 North, Range 23 West, County of Ramsey, State of Minnesota.

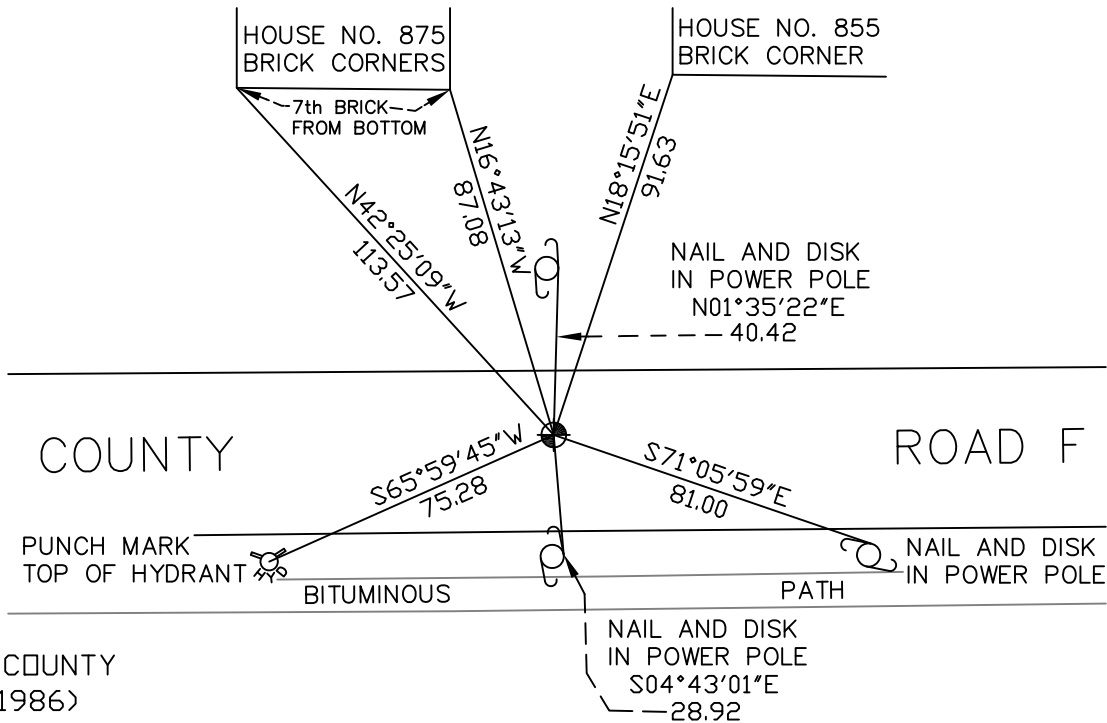
At the corner location shown on the sketch

On November 10, 2008 found a cast iron monument, flush.

left monument as found     lowered monument     removed monument (explain)

On \_\_\_\_\_ placed a \_\_\_\_\_

### SKETCH OF REFERENCE TIES



RAMSEY COUNTY  
NAD83 (1986)

MONUMENT 210

X= 563647.830 (Easting)  
Y= 199866.610 (Northing)

ALL DISTANCES ARE SHOWN IN U.S. SURVEY FEET.  
BEARINGS ARE FOR TIE REFERENCE PURPOSES ONLY.

Statements of evidence relative to this corner are on the following page(s).

I hereby certify that this document and the data contained herein was prepared by me or under my direct supervision this \_\_\_\_\_ day of \_\_\_\_\_, 20\_\_\_\_.

SIGNATURE

Minnesota License No. \_\_\_\_\_

- County Surveyor  
 Deputy County Surveyor     Land Surveyor

OFFICE OF COUNTY SURVEYOR  
County of Ramsey

I hereby certify that this document was filed in the County Surveyor's office on the \_\_\_\_ day of \_\_\_\_\_, 20\_\_\_\_.

David D. Claypool, P.L.S., County Surveyor

By \_\_\_\_\_, Deputy

## MONUMENT 210

Found a granite monument down 0.1 ft. in centerline of County Road F, May 31, 1974.

Tied monument, October 23, 1974.

Retied monument, February 1, 1991.

Monument removed for construction, no date given in book.

Set a 20 in. cast iron monument in cement, June 11, 1996.

Tied monument, June 14, 1996.

Retied monument, September 9, 2003.

Concrete maintenance around monument, September 8, 2006.

Retied monument, November 10, 2008.