

MONUMENT 183

CERTIFICATE OF LOCATION OF GOVERNMENT CORNER

Center of Section 22, Township 30 North, Range 23 West, County of Ramsey,
State of Minnesota.

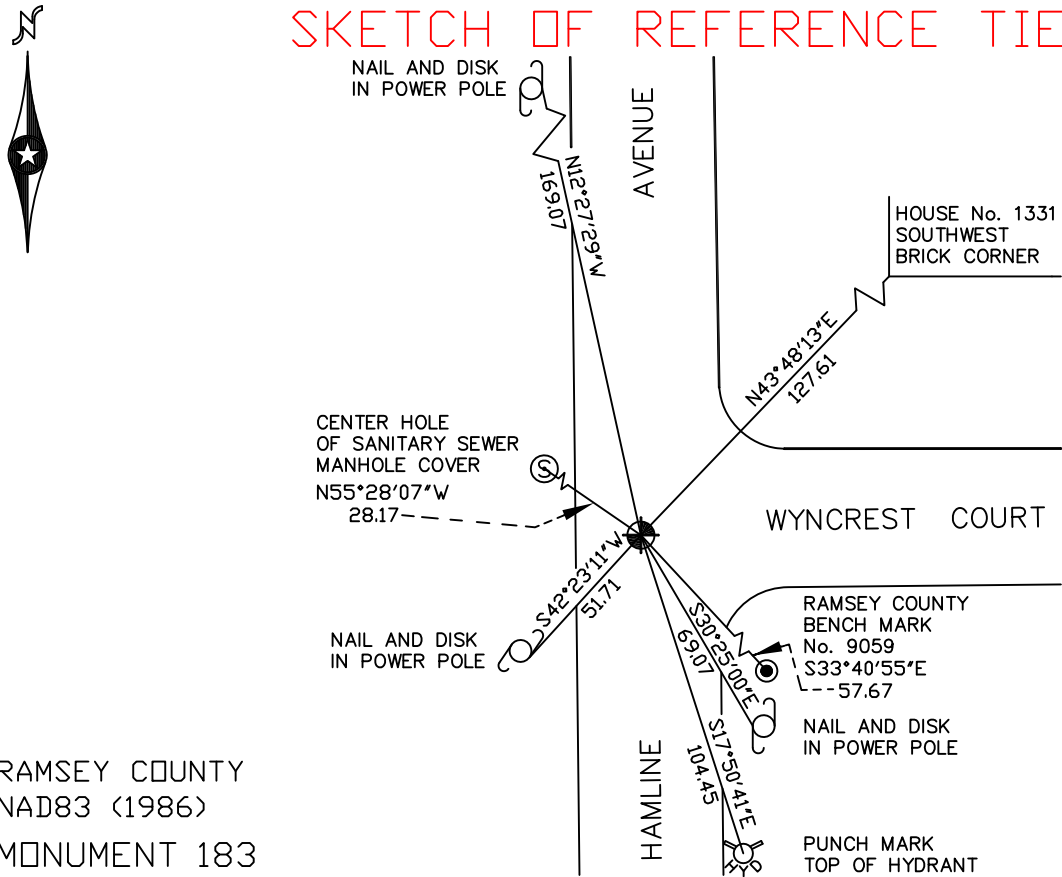
At the corner location shown on the sketch

On October 6, 2008 found a cast iron monument, down 0.15 feet.

left monument as found lowered monument removed monument (explain)

On _____ placed a _____

SKETCH OF REFERENCE TIES



RAMSEY COUNTY
NAD83 (1986)
MONUMENT 183

X= 558352.053 (Easting)
Y= 202467.099 (Northing)

ALL DISTANCES ARE SHOWN IN U.S. SURVEY FEET.
BEARINGS ARE FOR TIE REFERENCE PURPOSES ONLY.

Statements of evidence relative to this corner are on the following page(s).

I hereby certify that this document and the data contained herein was prepared by me or under my direct supervision this _____ day of _____, 20____.

SIGNATURE

Minnesota License No. _____

County Surveyor
 Deputy County Surveyor Land Surveyor

OFFICE OF COUNTY SURVEYOR
County of Ramsey

I hereby certify that this document was filed in the County Surveyor's office on the ____ day of _____, 20____.

David D. Claypool, P.L.S., County Surveyor

By _____, Deputy

MONUMENT 183

Found a granite monument down 6 inches, under a railroad spike; placed a 5 inch cast iron monument, November 20, 1974.

Retied monument, February 19, 1976.

Monument destroyed by the City of Arden Hills, 1986.

Placed a 20 inch cast iron monument, 1987.

Retied monument, January 14, 1992.

Retied monument, December 6, 2002.

Retied monument, October 6, 2008.