

# MONUMENT 182

## CERTIFICATE OF LOCATION OF GOVERNMENT CORNER

West Quarter Corner of Section 22, Township 30 North, Range 23 West, County of Ramsey, State of Minnesota.

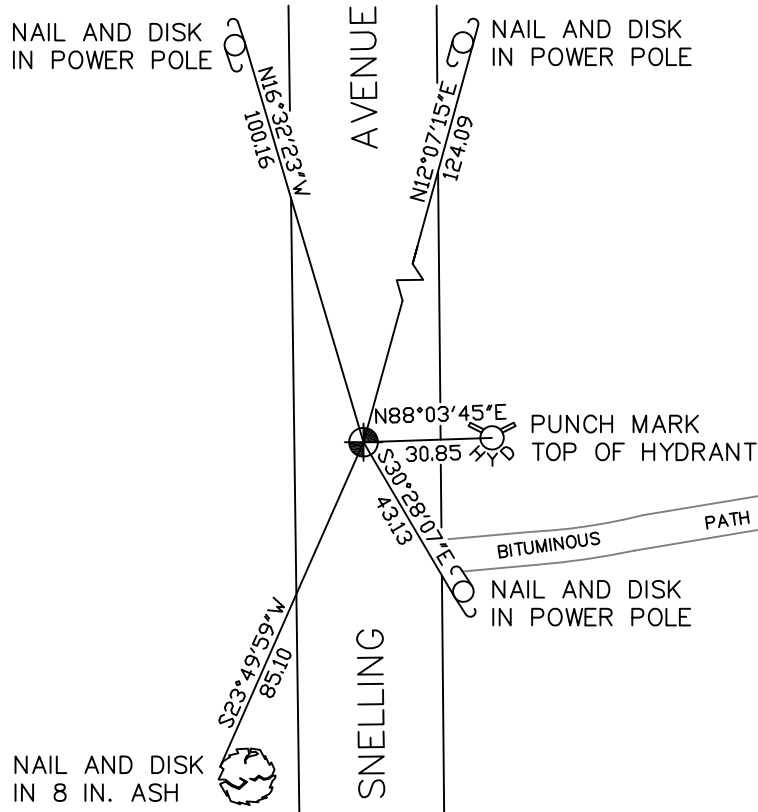
At the corner location shown on the sketch

On October 6, 2008 found a cast iron monument, flush.

left monument as found     lowered monument     removed monument (explain)

On \_\_\_\_\_ placed a \_\_\_\_\_

### SKETCH OF REFERENCE TIES



RAMSEY COUNTY  
NAD83 (1986)  
MONUMENT 182

X= 555703.719 (Easting)  
Y= 202454.742 (Northing)

ALL DISTANCES ARE SHOWN IN U.S. SURVEY FEET.  
BEARINGS ARE FOR TIE REFERENCE PURPOSES ONLY.

Statements of evidence relative to this corner are on the following page(s).

I hereby certify that this document and the data contained herein was prepared by me or under my direct supervision this \_\_\_\_\_ day of \_\_\_\_\_, 20\_\_\_\_.

SIGNATURE

Minnesota License No. \_\_\_\_\_

- County Surveyor  
 Deputy County Surveyor     Land Surveyor

OFFICE OF COUNTY SURVEYOR  
County of Ramsey

I hereby certify that this document was filed in the County Surveyor's office on the \_\_\_\_ day of \_\_\_\_\_, 20\_\_\_\_.

David D. Claypool, P.L.S., County Surveyor

By \_\_\_\_\_, Deputy

## MONUMENT 182

Found a granite monument down 0.2 ft.; placed a cast iron cap and bolt monument; retied, September 10, 1974.

Monument tied; cast iron cap and bolt monument removed for the City of Arden Hills road project, July 31, 1991.

Set a 20 in. cast iron monument, October 14, 1992.

Tied monument, February 1, 1993.

Retied monument, found flush, August 6, 2003.

Retied monument, October 6, 2008.