

# MONUMENT 142

## CERTIFICATE OF LOCATION OF GOVERNMENT CORNER

East Quarter Corner of Section 17, Township 30 North, Range 22 West, County of Ramsey, State of Minnesota.

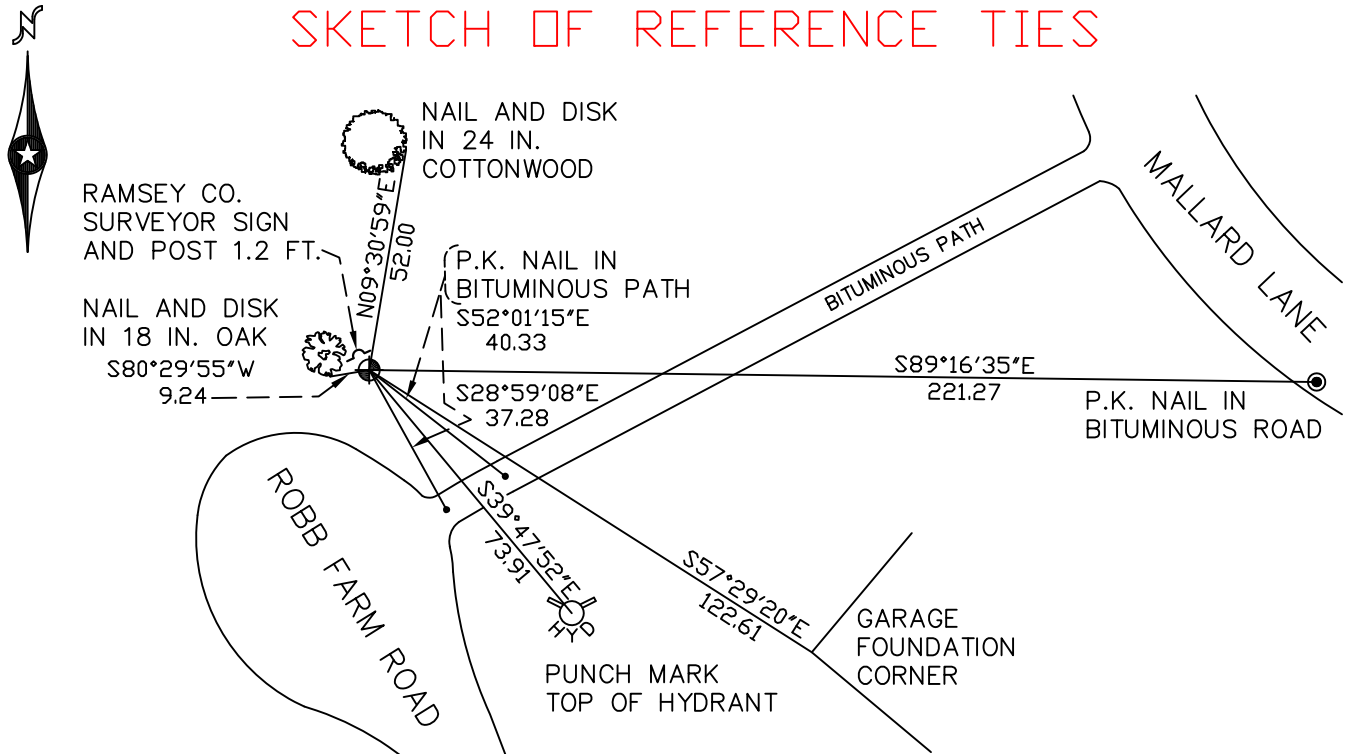
At the corner location shown on the sketch

On November 5, 2008 found a cast iron monument.

left monument as found     lowered monument     removed monument (explain)

On \_\_\_\_\_ placed a \_\_\_\_\_

### SKETCH OF REFERENCE TIES



RAMSEY COUNTY  
NAD83 (1986)

MONUMENT 142

X= 581852.638 (Easting)  
Y= 207853.455 (Northing)

ALL DISTANCES ARE SHOWN IN U.S. SURVEY FEET.  
BEARINGS ARE FOR TIE REFERENCE PURPOSES ONLY.

Statements of evidence relative to this corner are on the following page(s).

I hereby certify that this document and the data contained herein was prepared by me or under my direct supervision this \_\_\_\_\_ day of \_\_\_\_\_, 20\_\_\_\_.

SIGNATURE

Minnesota License No. \_\_\_\_\_

- County Surveyor  
 Deputy County Surveyor     Land Surveyor

OFFICE OF COUNTY SURVEYOR

County of Ramsey

I hereby certify that this document was filed in the County Surveyor's office on the \_\_\_\_ day of \_\_\_\_\_, 20\_\_\_\_.

David D. Claypool, P.L.S., County Surveyor

By \_\_\_\_\_, Deputy

## MONUMENT 142

Found a 1/2 in. inner diameter iron pipe, March, 1988.

Iron pipe was set by M.W. Carley after construction of cul-de-sac.

Tied iron, May 7, 1990.

Iron found to be out of position. Found old irons and computed new location.  
No date given in field book.

Placed a 20 in. cast iron monument flush; tied and placed sign and post, August 28, 1991.

Retied monument, April 28, 2003.

Retied monument, November 5, 2008.