

# MONUMENT 130

## CERTIFICATE OF LOCATION OF GOVERNMENT CORNER

East Quarter Corner of Section 17, Township 30 North, Range 23 West, County of Ramsey, State of Minnesota.

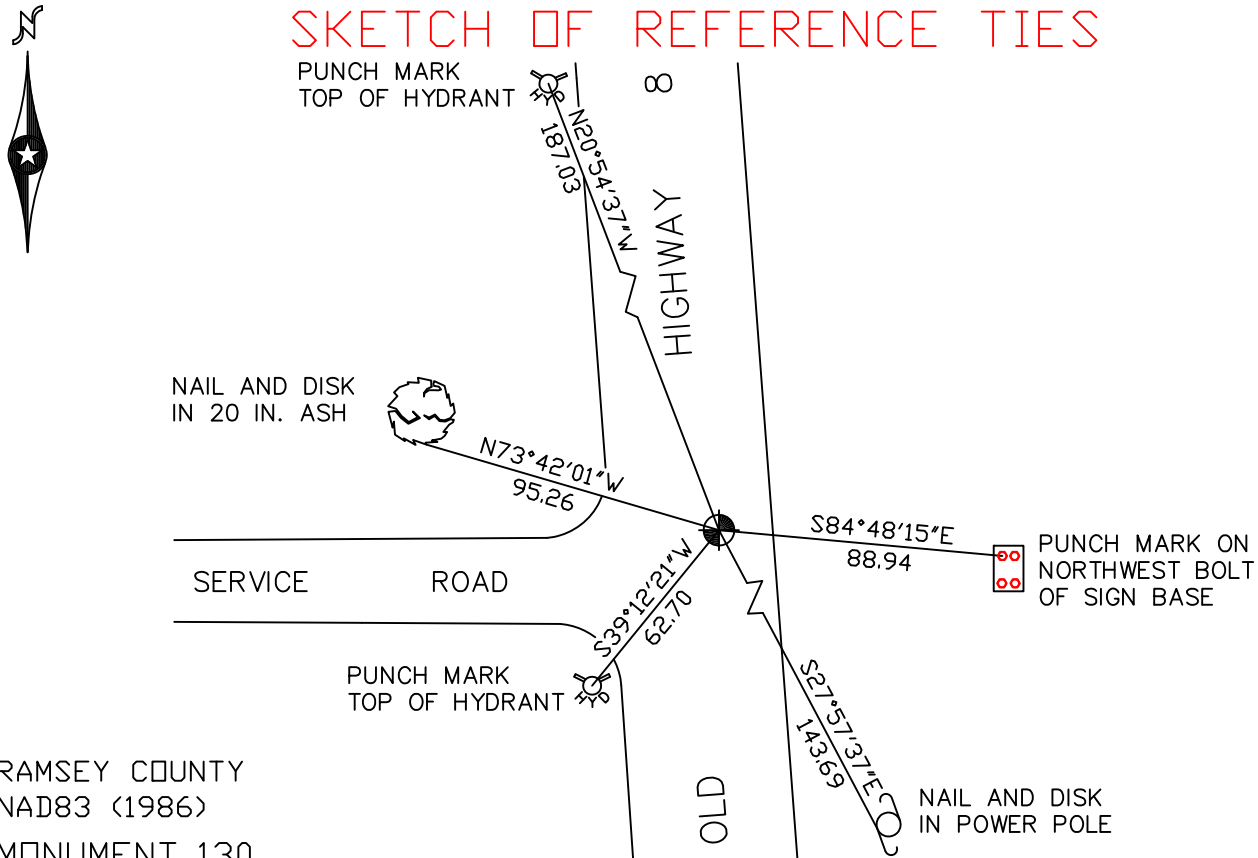
At the corner location shown on the sketch

On September 26, 2008 found a cast iron monument within a cast iron manhole assembly.

left monument as found     lowered monument     removed monument (explain)

On \_\_\_\_\_ placed a \_\_\_\_\_

### SKETCH OF REFERENCE TIES



RAMSEY COUNTY  
NAD83 (1986)  
MONUMENT 130

X= 550381.575 (Easting)  
Y= 207695.267 (Northing)

ALL DISTANCES ARE SHOWN IN U.S. SURVEY FEET.  
BEARINGS ARE FOR TIE REFERENCE PURPOSES ONLY.

Statements of evidence relative to this corner are on the following page(s).

I hereby certify that this document and the data contained herein was prepared by me or under my direct supervision this \_\_\_\_\_ day of \_\_\_\_\_, 20\_\_\_\_.

SIGNATURE

Minnesota License No. \_\_\_\_\_

- County Surveyor  
 Deputy County Surveyor     Land Surveyor

OFFICE OF COUNTY SURVEYOR  
County of Ramsey

I hereby certify that this document was filed in the County Surveyor's office on the \_\_\_\_ day of \_\_\_\_\_, 20\_\_\_\_.

David D. Claypool, P.L.S., County Surveyor

By \_\_\_\_\_, Deputy

## MONUMENT 130

Found a granite monument down 0.17 ft. and retied, August 21, 1974.

Placed a cast iron cap and bolt monument, October 10, 1974.

Retied granite monument down +/- 0.3 ft., May 26, 1993.

Removed monument for construction, no date given in field book.

Set a 20 inch cast iron monument within a cast iron manhole assembly,  
June 2, 1998.

Retied monument, July 7, 2003.

Concrete repair around manhole assembly, September 8, 2006.

Retied monument, September 26, 2008.