

MONUMENT 125N

CERTIFICATE OF LOCATION OF GOVERNMENT CORNER

Witness Corner to Meander Corner No. 1 on the East line of the Southeast Quarter of Section 12, Township 30 North, Range 22 West, County of Ramsey, State of Minnesota.

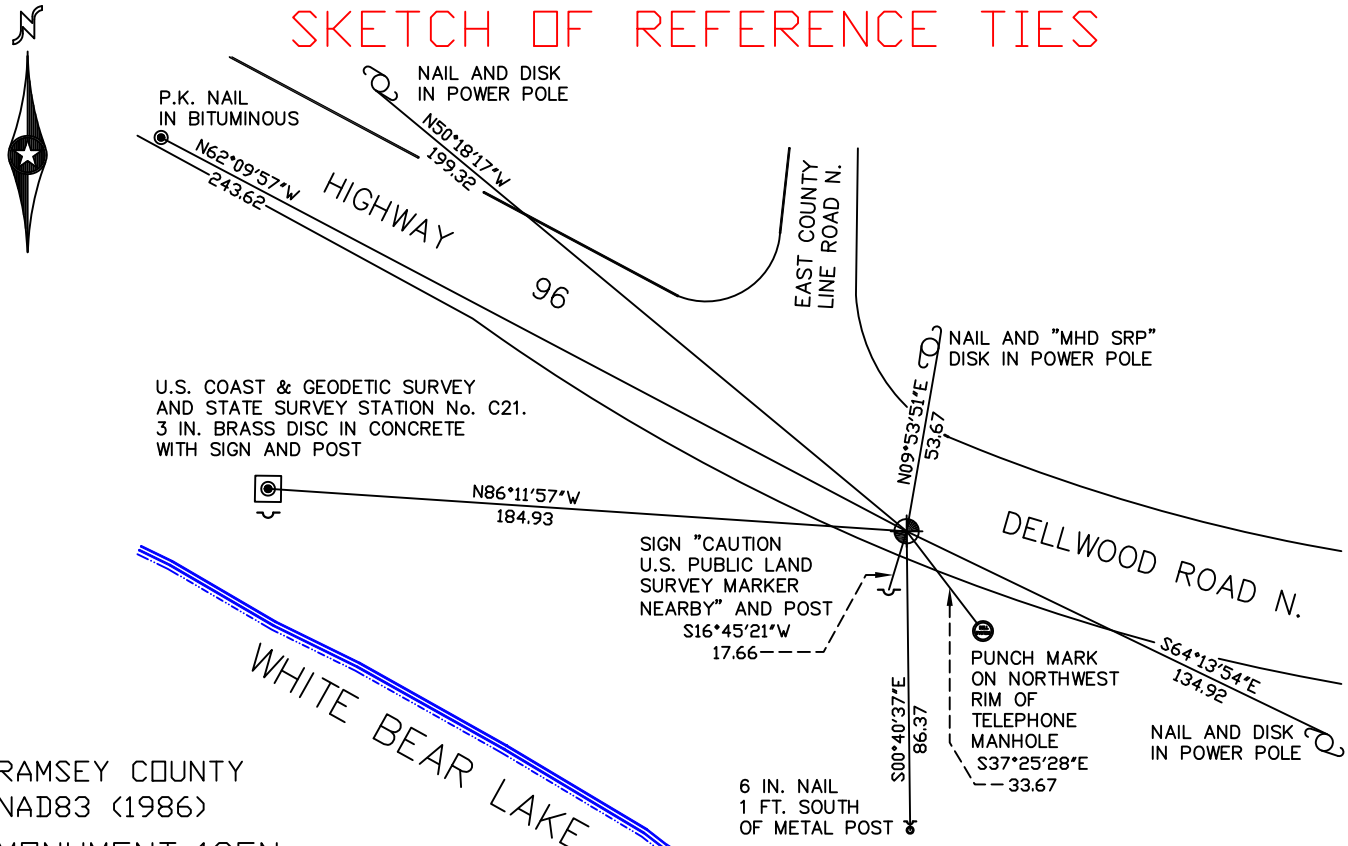
At the corner location shown on the sketch

On November 5, 2008 found a cast iron monument, flush.

left monument as found lowered monument removed monument (explain)

On _____ placed a _____

SKETCH OF REFERENCE TIES



ALL DISTANCES ARE SHOWN IN U.S. SURVEY FEET.
BEARINGS ARE FOR TIE REFERENCE PURPOSES ONLY.

Statements of evidence relative to this corner are on the following page(s).

I hereby certify that this document and the data contained herein was prepared by me or under my direct supervision this _____ day of _____, 20____.

SIGNATURE

Minnesota License No. _____

- County Surveyor
 Deputy County Surveyor Land Surveyor

OFFICE OF COUNTY SURVEYOR
County of Ramsey

I hereby certify that this document was filed in the County Surveyor's office on the ____ day of _____, 20____.

David D. Claypool, P.L.S., County Surveyor

By _____, Deputy

MONUMENT 125N

Looked for monument and found nothing, 1980.

Washington County tied monuments in Section 12 and placed a cast iron monument in pavement of State Highway 96, no date given in field book.

Looked for granite monument that was placed in October of 1897.

Lake level way down; excavated with the help of Maintenance Department and a backhoe, found nothing. Old book states monument washed out; October 18, 1989.

Tied monument, January 27, 1992.

Monument found broken off; set a 20 inch cast iron monument and cemented in, August 1, 1996.

Tied monument, found flush, August 6, 2003.

Retied monument, November 5, 2008.