

MONUMENT 119

CERTIFICATE OF LOCATION OF GOVERNMENT CORNER

Northwest Corner of Section 15, Township 30 North, Range 22 West, County of Ramsey, State of Minnesota.

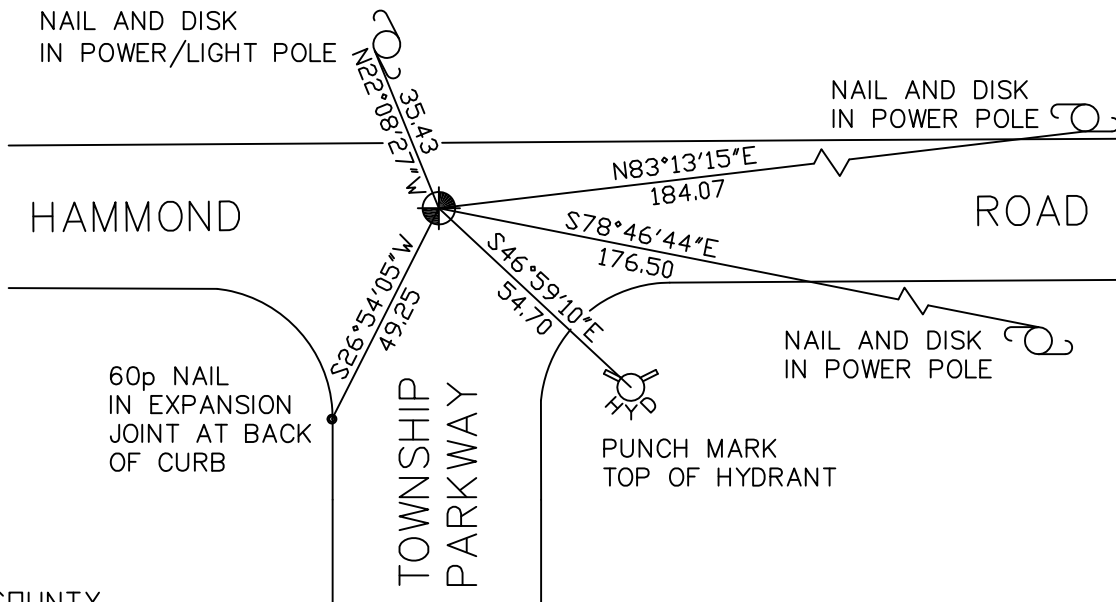
At the corner location shown on the sketch

On November 5, 2008 found a cast iron monument within a cast iron manhole assembly.

left monument as found lowered monument removed monument (explain)

On _____ placed a _____

SKETCH OF REFERENCE TIES



RAMSEY COUNTY
NAD83 (1986)

MONUMENT 119

X= 587130.505 (Easting)
Y= 210535.566 (Northing)

ALL DISTANCES ARE SHOWN IN U.S. SURVEY FEET.
BEARINGS ARE FOR TIE REFERENCE PURPOSES ONLY.

Statements of evidence relative to this corner are on the following page(s).

I hereby certify that this document and the data contained herein was prepared by me or under my direct supervision this _____ day of _____, 20____.

SIGNATURE

Minnesota License No. _____

- County Surveyor
 Deputy County Surveyor Land Surveyor

OFFICE OF COUNTY SURVEYOR

County of Ramsey

I hereby certify that this document was filed in the County Surveyor's office on the ____ day of _____, 20____.

David D. Claypool, P.L.S., County Surveyor

By _____, Deputy

MONUMENT 119

Found a granite monument down 0.1 ft. in center line of gravel road; retied, May 21, 1974.

Granite monument down +/- 0.15 ft. in oiled road. Retied monument, May 7, 1979.

Granite monument disturbed by construction. Set a 20 in. cast iron monument. No date given in field book.

Tied monument down +/- 0.5 ft., January 30, 1992.

Set a short (4 5/8 in.) cast iron monument in cement on top of 20 in. cast iron monument, October 5, 1994.

Tied monument, September 30, 1999.

Monument destroyed by construction. Set a cast iron monument within a cast iron manhole assembly, June 5, 2002.

Tied monument, August 6, 2002.

Retied monument, November 5, 2008.