

MONUMENT 90N

CERTIFICATE OF LOCATION OF GOVERNMENT CORNER

Monument on the East line of the Northeast Quarter of Section 7, Township 30 North, Range 22 West, County of Ramsey, State of Minnesota.

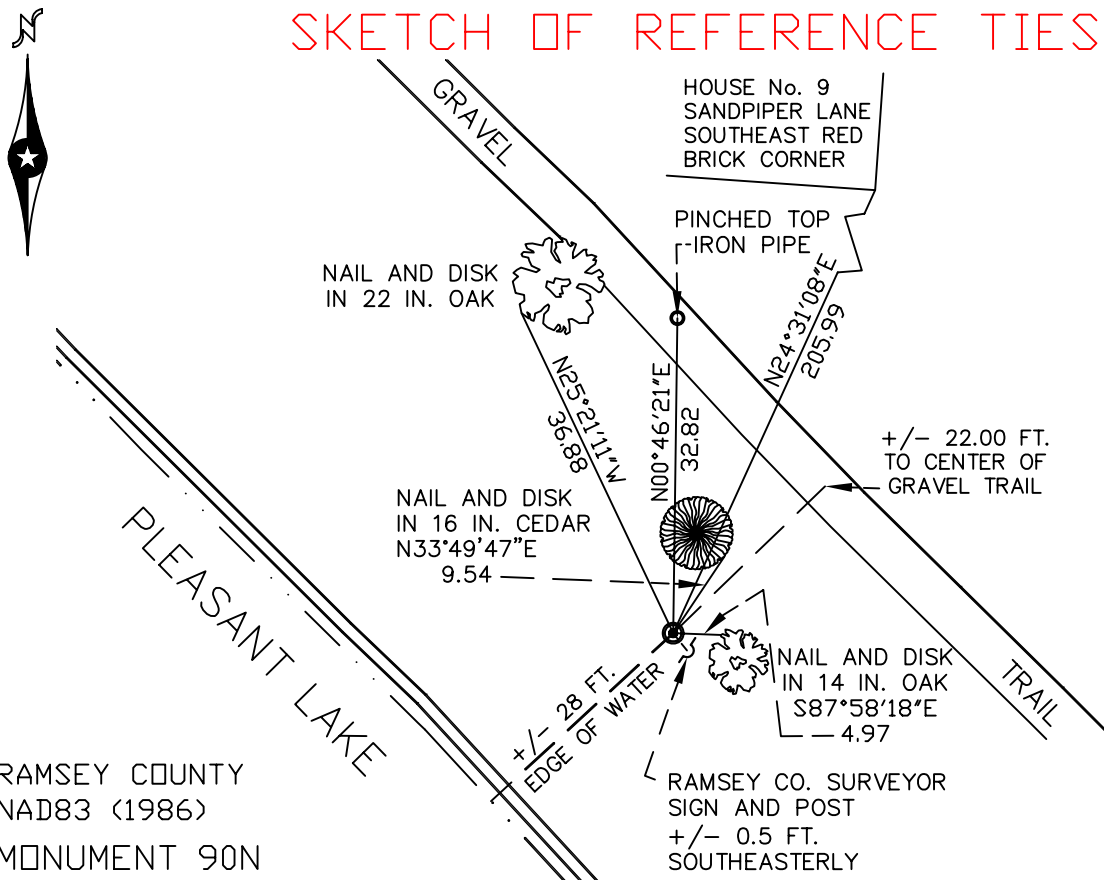
At the corner location shown on the sketch

On July 11, 2007 found a 1 in. iron pipe in concrete within a 5 in. iron pipe.

left monument as found lowered monument removed monument (explain)

On _____ placed a _____

SKETCH OF REFERENCE TIES



RAMSEY COUNTY
NAD83 (1986)
MONUMENT 90N

X= 576548.448 (Easting)
Y= 214081.455 (Northing)

ALL DISTANCES ARE SHOWN IN U.S. SURVEY FEET.
BEARINGS ARE FOR TIE REFERENCE PURPOSES ONLY.

Statements of evidence relative to this corner are on the following page(s).

I hereby certify that this document and the data contained herein was prepared by me or under my direct supervision this _____ day of _____, 20____.

SIGNATURE

Minnesota License No. _____

County Surveyor
 Deputy County Surveyor Land Surveyor

OFFICE OF COUNTY SURVEYOR
County of Ramsey

I hereby certify that this document was filed in the County Surveyor's office on the ____ day of _____, 20____.

David D. Claypool, P.L.S., County Surveyor

By _____, Deputy

MONUMENT 90N

Found iron pipe in concrete and pipe, set by Milner W. Carley and Associates.
Tied and placed sign and post, May 9, 1991.

Retied monument, November 16, 2001.

Retied monument, July 11, 2007.