

MONUMENT 87E

CERTIFICATE OF LOCATION OF GOVERNMENT CORNER

Monument on the East-West Quarter Line of Section 12, Township 30 North,
Range 23 West, County of Ramsey, State of Minnesota.

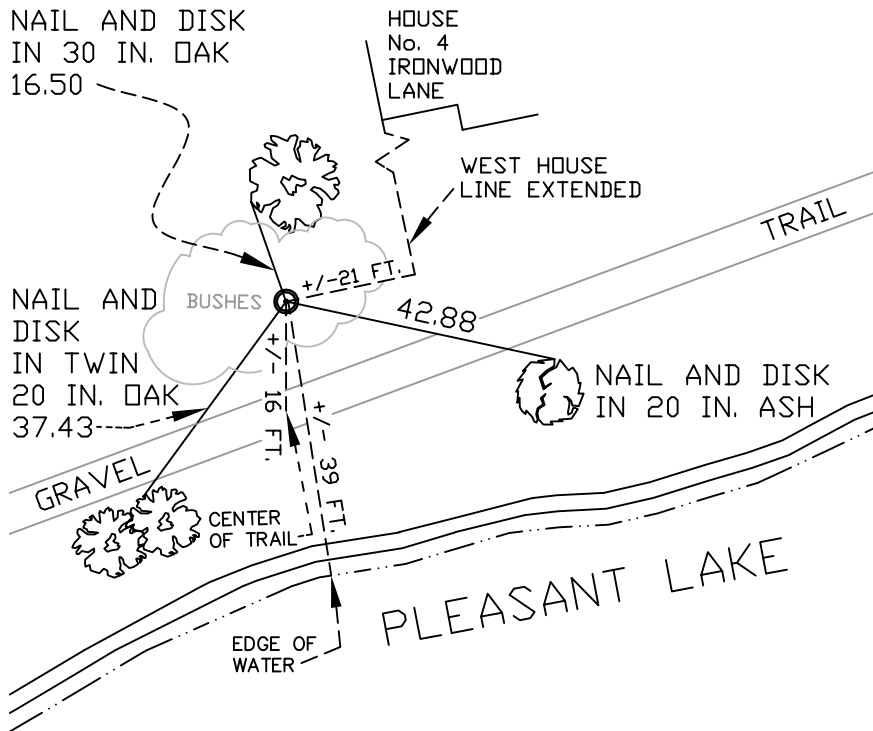
At the corner location shown on the sketch

On July 11, 2007 found a 1/2 inch iron pipe in concrete, down 6 inches
under landscape rock and fabric.

left monument as found lowered monument removed monument (explain)

On _____ placed a _____

SKETCH OF REFERENCE TIES



RAMSEY COUNTY
NAD83 (1986)
MONUMENT 87E

X= 570517.697 (Easting)
Y= 213116.465 (Northing)

ALL DISTANCES ARE SHOWN IN U.S. SURVEY FEET.

Statements of evidence relative to this corner are on the following page(s).

I hereby certify that this document and the data contained herein was prepared by me or under my direct supervision this _____ day of _____, 20____.

SIGNATURE

Minnesota License No. _____

- County Surveyor
 Deputy County Surveyor Land Surveyor

OFFICE OF COUNTY SURVEYOR
County of Ramsey

I hereby certify that this document was filed in the County Surveyor's office on the ____ day of _____, 20____.

David D. Claypool, P.L.S., County Surveyor

By _____, Deputy

MONUMENT 87E

Found 1/2 in. iron pipe in concrete, set by Milner W. Carley and Associates.
Retied monument, January 11, 1988.

Found 1/2 in. iron pipe in concrete, down 5 in.; set sign and post 0.5 ft. northerly
and retied, September 24, 2001.

Retied monument, July 11, 2007.