

# MONUMENT 84

## CERTIFICATE OF LOCATION OF GOVERNMENT CORNER

West Quarter Corner of Section 11, Township 30 North, Range 23 West, County of Ramsey, State of Minnesota.

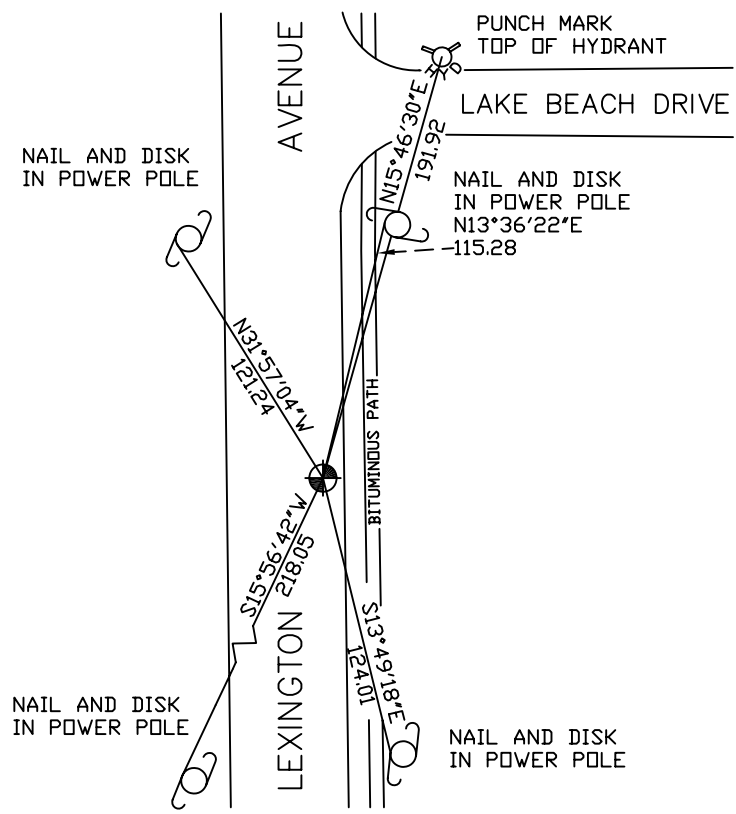
At the corner location shown on the sketch

On June 28, 2007 found a cast iron monument within a cast iron manhole assembly.

left monument as found     lowered monument     removed monument (explain)

On \_\_\_\_\_ placed a \_\_\_\_\_

## SKETCH OF REFERENCE TIES



RAMSEY COUNTY  
NAD83 (1986)  
MONUMENT 84

X= 560874.895 (Easting)  
Y= 213022.904 (Northing)

ALL DISTANCES ARE SHOWN IN U.S. SURVEY FEET.  
BEARINGS ARE FOR TIE REFERENCE PURPOSES ONLY.

Statements of evidence relative to this corner are on the following page(s).

I hereby certify that this document and the data contained herein was prepared by me or under my direct supervision this \_\_\_\_\_ day of \_\_\_\_\_, 20\_\_\_\_.

\_\_\_\_\_  
SIGNATURE

Minnesota License No. \_\_\_\_\_

County Surveyor  
 Deputy County Surveyor     Land Surveyor

OFFICE OF COUNTY SURVEYOR  
County of Ramsey

I hereby certify that this document was filed in the County Surveyor's office on the \_\_\_\_ day of \_\_\_\_\_, 20\_\_\_\_.

David D. Claypool, P.L.S., County Surveyor

By \_\_\_\_\_, Deputy

## MONUMENT 84

Found a granite monument down 0.43 ft.; set short (4 3/8 in.) cast iron, July 16, 1975.

Retied monument, July 28, 1975.

Removed short cast iron monument for construction, granite monument destroyed, April 30, 1990.

Set a 20 in. cast iron monument, August 21, 1991.

Tied monument and cemented top, August 29, 1991.

Removed and lowered cast iron monument; set 12 in. tube around monument, April 30, 2002.

Set a cast iron manhole assembly over monument, May 14, 2002.

Retied monument, November 22, 2002.

Retied monument, June 28, 2007.