

MONUMENT 63

CERTIFICATE OF LOCATION OF GOVERNMENT CORNER

Southeast Corner of Section 1, Township 30 North, Range 23 West, County of Ramsey, State of Minnesota.

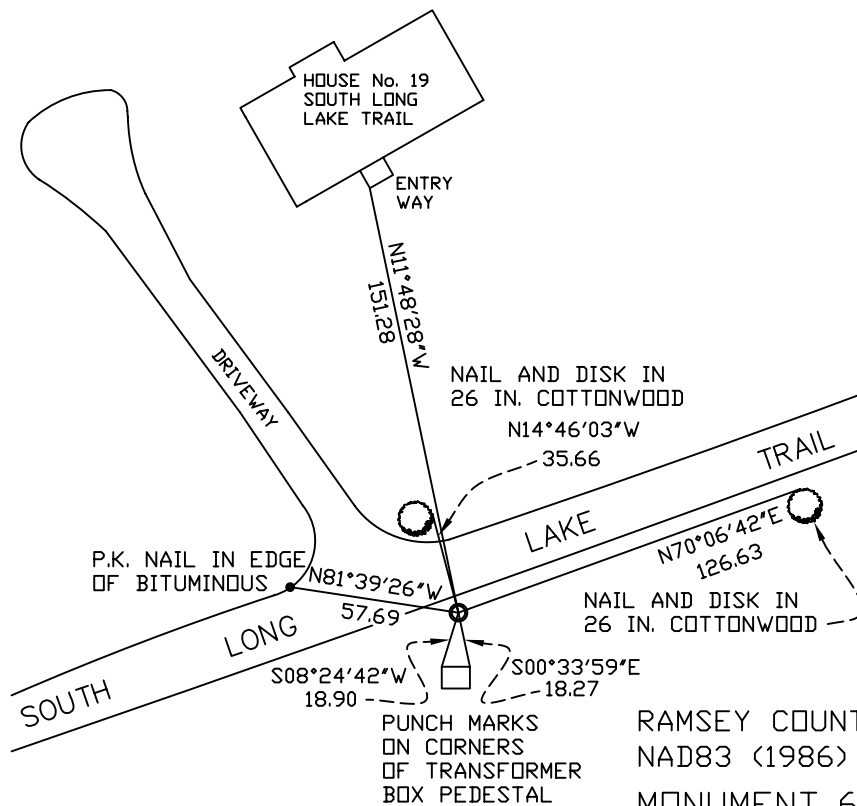
At the corner location shown on the sketch

On June 29, 2007 found 1 in. iron pipe within a 5 in. iron pipe and concrete,
with sign and post +/- 0.5 ft. south.

left monument as found lowered monument removed monument (explain)

On _____ placed a _____

SKETCH OF REFERENCE TIES



ALL DISTANCES ARE SHOWN IN U.S. SURVEY FEET.
 BEARINGS ARE FOR TIE REFERENCE PURPOSES ONLY.

RAMSEY COUNTY
 NAD83 (1986)
 MONUMENT 63

X = 571396.151 (Easting)
 Y = 215786.448 (Northing)

Statements of evidence relative to this corner are on the following page(s).

I hereby certify that this document and the data contained herein was prepared by me or under my direct supervision this _____ day of _____, 20____.

 SIGNATURE

Minnesota License No. _____

- County Surveyor
 Deputy County Surveyor Land Surveyor

OFFICE OF COUNTY SURVEYOR
 County of Ramsey

I hereby certify that this document was filed in the County Surveyor's office on the ____ day of _____, 20____.

David D. Claypool, P.L.S., County Surveyor

By _____, Deputy

MONUMENT 63

Found an iron in concrete, 1985.

Tied monument, April 14, 1987.

Set sign and post and retied monument, July 18, 2001.

Retied monument, June 29, 2007.